

**Repossi**  
macchine agricole

## SPARE PARTS CATALOGUE

### COMB RAKES

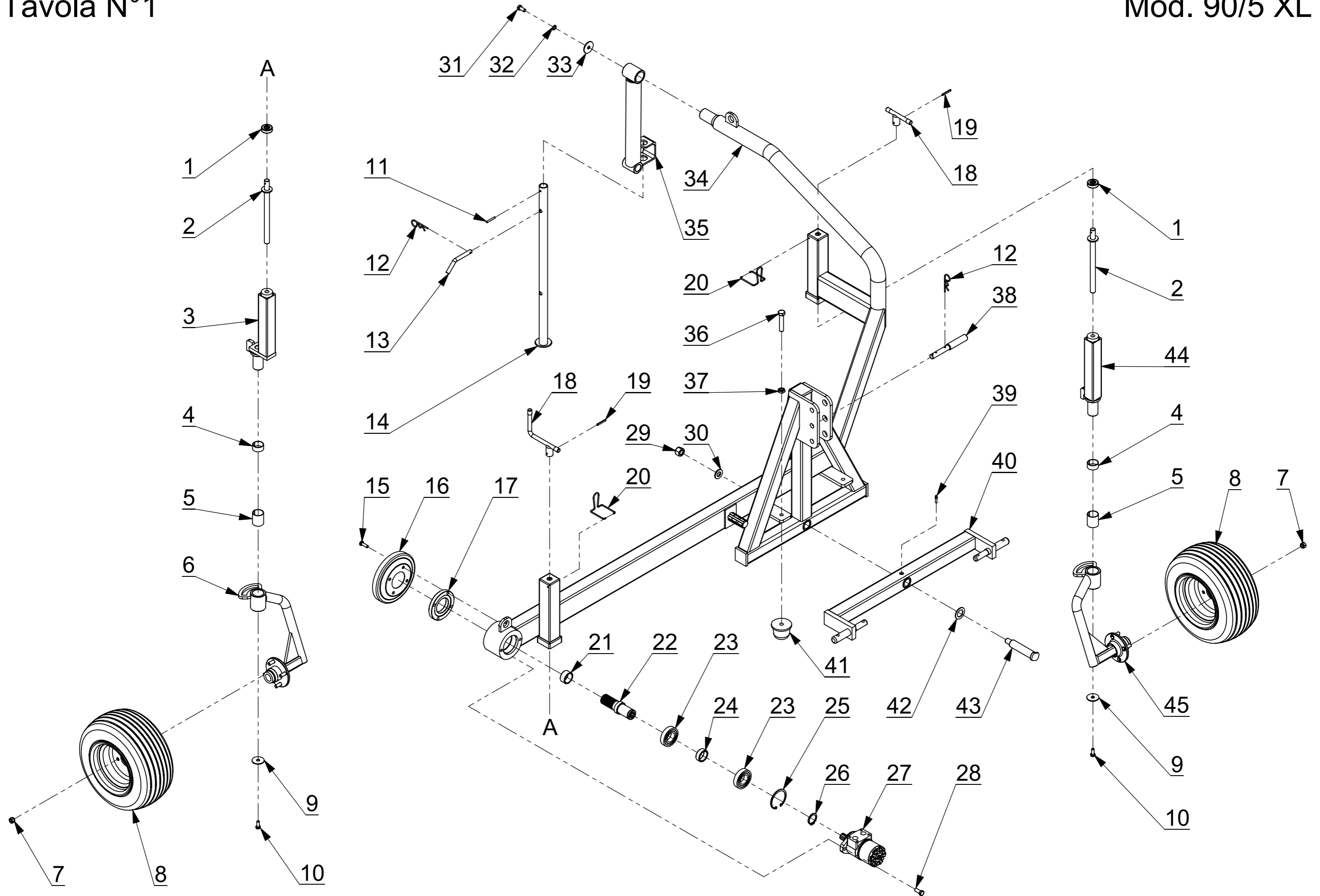
mod. **90/5 XL**

**Repossi** Macchine agricole s.r.l.

Via V. Emanuele II, 40 - 27022 Casorate Primo (PV) - Italia

Tel. \*\*39 02 905 66 25 - Fax \*\*39 02 905 13 08

e-mail: [info@repossi.it](mailto:info@repossi.it) - Web: [www.repossi.it](http://www.repossi.it)



Pos.	Cod. pezzo	Descrizione
1	01.15.1149.04	Thrust bearing for foot
2	01.15.1149.03	Screw for the height adjustment of the swivel wheel
3	09.04.1149.02	Internal foot with limited rotation and pin moved forward
4	03.15.4020.00	Sintered bush 40x44x20
5	03.15.4050.00	Sintered bush 40x44x50
6	09.00.2402.05	Rear left swiveling wheel fork with front limited rotation (16x6.5-8 wheel)
7	01.08.1215.00	Wheel nut M12
8	01.06.1608.04	Complete wheel 16x6.50-8 with 4 holes FIAT rim
8,1	01.06.1608.01	Tire 16x6.50-8
8,2	01.06.1608.02	Inner tube for wheel 16x6.50-8
8,3	01.06.1608.03	4 hole rim for wheel 16x6.50-8
9	03.07.1348.00	Washer 13x48x3
10	07.07.1025.04	Hexagonal head screw 10x25 8.8 uni 5739
11	03.11.0645.01	Elastic pin 6x45 zinc plated
12	03.05.0004.00	β cotter ø4
13	09.00.1433.98	Foot locking handle
14	09.00.1432.98	Foot
15	07.07.1030.04	Hexagonal head screw 10x30 8.8 uni 5739
16	06.03.0052.04	Crosswise protection cap with 4 holes
17	02.01.1056.00	Aluminum flange
18	01.15.1149.01	Height adjustment handle
19	03.11.0645.00	Elastic pin 6x45
20	01.15.1149.02	Locking handle spring
21	09.00.0482.00	External spacer 50x40x25
22	09.00.0481.01	Crosswise center shaft for oleodinamic engine

23	03.03.6208.00	Bearing 6208 - 40x80x18
24	09.00.0484.09	Internal spacer 50x40x18
25	03.09.0080.01	Snap ring 80i
26	03.09.0040.00	Snap ring 40e
27	04.01.0200.00	Hydraulic motor 200cc
27,1	04.01.0315.00	Hydraulic motor 315cc
27,2	04.01.0001.90	Hydraulic motor gasket kit (epm - omp)
28	07.07.1230.04	Hexagonal head screw 12x30 8.8 uni 5739
29	07.02.0020.01	Self-locking nut M 20
30	03.07.2040.00	Washer 20x40x5
31	07.07.1225.04	Hexagonal head screw 12x25 8.8 uni 5739
32	03.08.0012.02	Lock washer ø12 DIN 6798j
33	03.07.1350.00	Washer 13x50x3
34	09.00.3100.02	Main frame for mod. 90/5 XL with left side windrow
34,1	09.00.3100.04	Main frame for mod. 90/5 XL with right side windrow
35	09.00.3005.00	Straight arm with foot support
36	07.07.1680.01	Hexagonal head screw 16x80 8.8 uni 5737
37	07.01.0016.08	Nut M16 UNI 5589
38	09.00.1434.00	Three point pin
39	03.13.0006.01	Greaser
40	09.00.3001.05	Floating coupling cat. 1 and 2
41	03.10.8060.16	M16 bumper
42	03.07.3050.02	Washer 30,5x50x2,5
43	09.00.3002.00	Central pin for the horizontal part of the three point linkage
44	01.15.1149.06	Internal foot with limited rotation

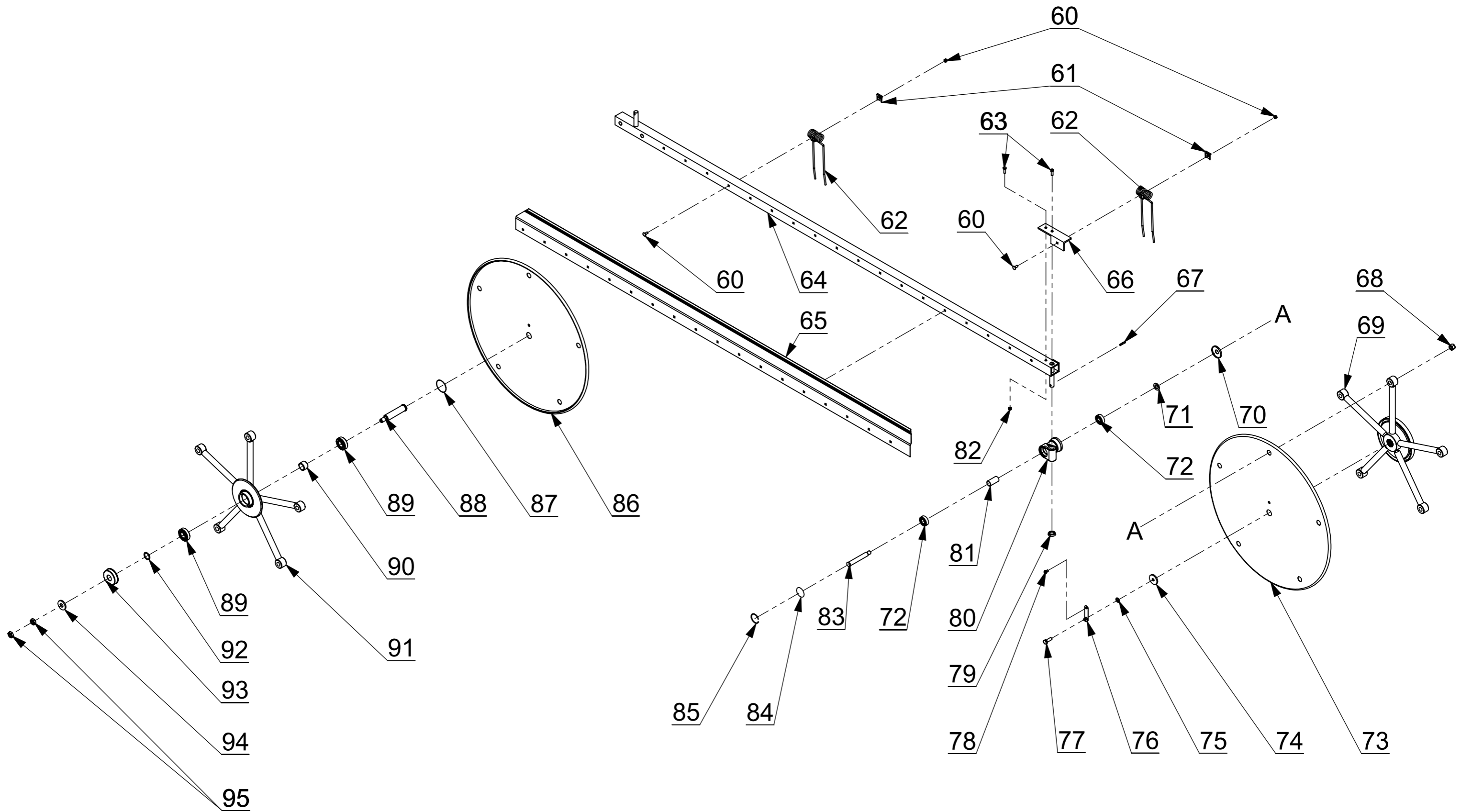
---

<b>Pos.</b>	<b>Cod. pezzo</b>	<b>Descrizione</b>
-------------	-------------------	--------------------

---

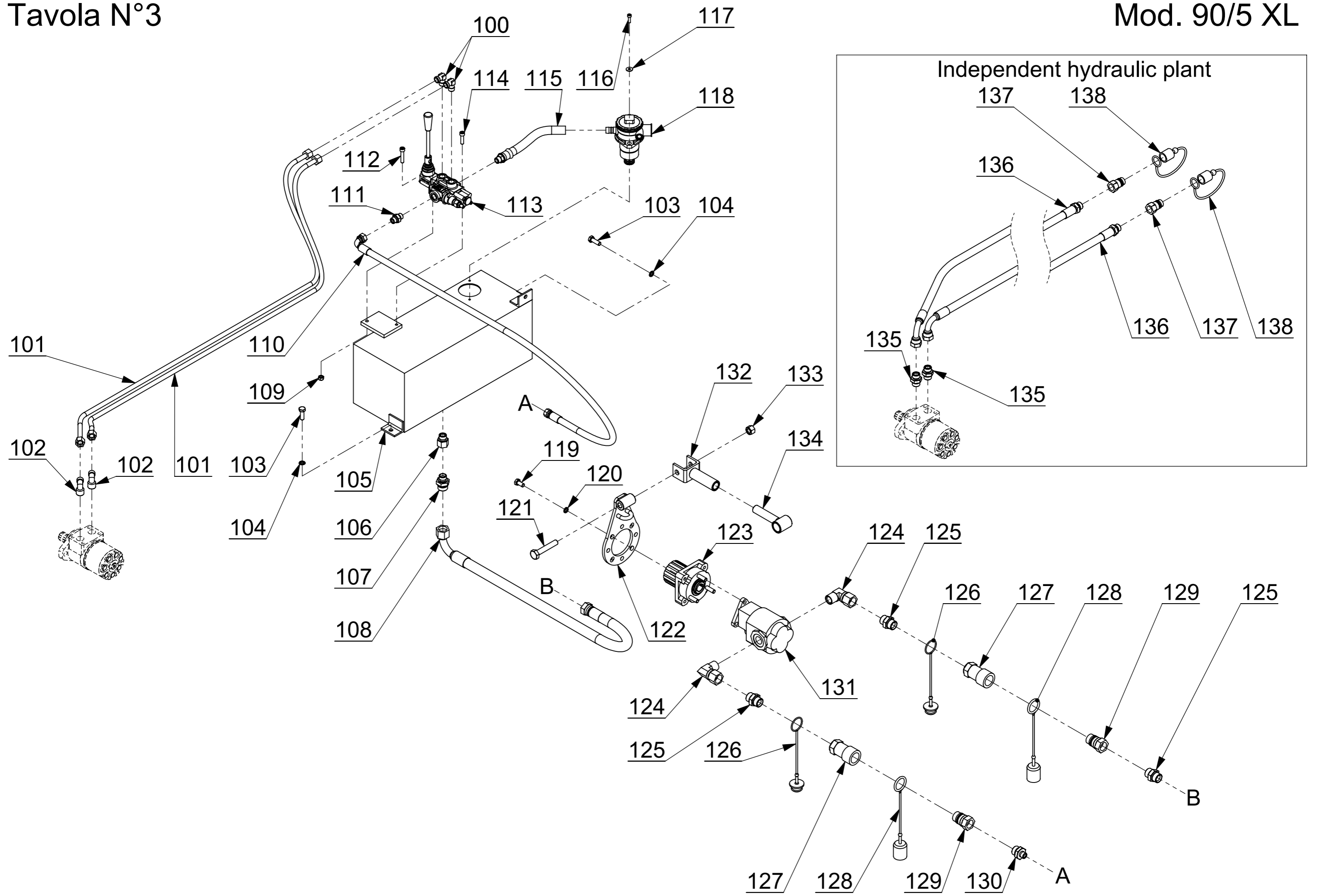
45	09.00.2402.04	Rear right swiveling wheel fork with front limited rotation (16x6.5-8 wheel)
----	---------------	--

---



Pos.	Cod. pezzo	Descrizione
60	07.06.0823.00	Round head square neck bolt 8x23 8.8 with Self-locking nut
61	06.02.0123.00	Spring locking plate
62	03.05.0122.00	Double spring for left side windrow
62,1	03.05.0122.01	Double spring for right side windrow
63	07.07.0825.05	Hexagonal head screw 8x25 8.8 uni 5739 zinc plated
64	09.00.2413.55	Reel angle-bar for left side windrow (20 springs)
64,1	09.00.2413.57	Complete reel for left side windrow (20 springs)
64,2	09.00.2413.05	Reel angle-bar for right side windrow (20 springs)
64,3	09.00.2413.06	Complete reel for right side windrow (20 springs)
65	11.020.0121.15	Plate for 20 springs reel - left windrow
65,1	11.020.0121.51	Plate for 20 springs reel - right windrow
66	09.02.2414.03	Support for additional spring - 20 springs reel - left side windrow
66,1	09.00.2414.03	Additional front spring (left windrow) with support (20 springs)
66,2	09.02.2414.04	Support for additional spring - 20 springs reel - right side windrow
66,3	09.00.2414.04	Additional front spring (right windrow) with support (20 springs)
67	03.11.0732.01	Elastic pin 7x32 zinc plated
68	07.02.0016.01	Self-locking nut M 16
69	09.00.0054.05	Driving crosswise 5 reels oleodinamic
70	01.14.0075.00	Rear reel support cap
71	03.07.2035.00	Washer 20,5x35x4
72	03.03.6204.02	Bearing 6204/2RS - 20x47x14
73	09.00.0055.05	5 holes plate
74	03.07.1356.00	Washer 13x56x8
75	03.08.0012.03	Lock washer ø12 DIN 6798j zinc plated
76	06.02.0070.00	Crosswise lock plate

77	07.07.1240.05	Hexagonal head screw 12x40 8.8 uni 5739 zinc plated
78	07.07.0810.04	Hexagonal head screw 8x10 8.8 uni 5739
79	06.02.0125.00	Zinc plater lock washer
80	01.14.0078.00	Reel support
80,1	09.00.0078.00	Complete reel support
81	09.00.0082.00	Reel support spacer
82	07.02.0006.01	Self-locking nut M 6
83	09.00.0084.00	Reel support pin
84	06.02.0085.00	Reel support crowned cap
85	03.09.0053.00	Snap ring WA-SB 53
86	09.00.0055.50	5 holes plate with domed centre
87	06.02.0091.00	Crosswise crowned cap
88	09.00.1192.00	Driven crosswise center pin
89	03.03.6206.00	Bearing 6206 - 30x62x16
90	09.00.0094.00	Crosswise internal spacer
91	09.00.0095.05	Driven crosswise 5 reels
92	09.00.0097.00	Crosswise rear spacer
93	06.02.0098.00	Rear crosswise cap
94	03.07.1948.00	Washer 19x48x6
95	07.01.0018.08	Nut M18 UNI 5589



Pos.	Cod. pezzo	Descrizione
100	04.14.0094.12	Pipe fitting DIN TN 94 - 12 LR
101	09.00.3112.00	Iron pipe
102	04.14.1294.12	Pipe fitting DIN TN 94-12 LR 1/2"
103	07.07.1030.04	Hexagonal head screw 10x30 8.8 uni 5739
104	03.08.0010.01	Grower washer ø10 DIN 7980 zinc plated
105	09.00.0450.90	20 Lt. tank
106	04.13.0012.04	Extension M + F 1/2"
107	04.13.3412.02	Nipple 3/4" - 1/2"
108	04.21.0900.00	Rubber pipe
109	07.02.0008.01	Self-locking nut M 8
110	04.18.1150.00	Rubber pipe
111	04.13.0038.01	Nipple 3/8" - 3/8"
112	07.03.0840.02	Socket head screw 8x40 UNI 5931 zinc plated
113	04.03.0004.00	Oleodinamic engine distributor (with lever)
113,1	04.03.0040.01	Complete distributor lever
113,2	04.03.0041.01	Distributor lever
113,3	04.03.0103.02	Spool type 3 (double acting A and B connected to the tank in central position)
113,4	04.03.0204.03	Spool control type D (detent in 0,1,2)
114	07.03.0830.02	Socket head screw 8x30 UNI 5931 zinc plated
115	04.20.0250.00	Rubber pipe
116	07.03.0620.02	Socket head screw 6x20 UNI 5931 zinc plated
117	03.06.0618.01	Washer ø 6 UNI 6593 (6,2x18x1,6) zinc plated
118	04.08.5060.00	Oil filter
118,1	04.08.5060.01	O-ring for filter 50/60
119	07.07.1020.05	Hexagonal head screw 10x20 8.8 uni 5739 zinc plated

120	03.08.0010.01	Grower washer ø10 DIN 7980 zinc plated
121	07.07.1480.02	Hexagonal head screw 14x80 8.8 uni 5737 zinc plated
122	09.00.1720.04	Pump attachment support
123	04.02.0002.90	Fast coupling SER2 for cast iron pump
124	04.13.0034.10	Union elbow Male - Female 3/4"
125	04.13.0034.01	Nipple 3/4" - 3/4"
126	04.15.0034.05	Cover for quick-release coupling female 3/4"
127	04.15.0034.02	Quick-release coupling female 3/4"
128	04.15.0034.03	Cover for quick-release coupling male 3/4"
129	04.15.0034.01	Quick-release coupling male 3/4"
130	04.13.3438.02	Nipple 3/4" - 3/8"
131	04.02.0025.01	Cast iron reversible 25 lt. Pump
131,1	04.02.0060.01	Cast iron reversible 60 lt. Pump
132	09.00.1720.01	Pump locking bracket
133	07.02.0014.01	Self-locking nut M 14
134	09.00.1720.02	Pump locking pin
135	04.13.0012.01	Nipple 1/2" - 1/2"
136	04.19.2000.00	Rubber pipe
137	04.15.0012.01	Quick-release coupling male 1/2"
138	04.15.0012.03	Cover for quick-release coupling male 1/2"