



**Repossi**  
macchine agricole

## SPARE PARTS CATALOGUE

### COMB RAKE

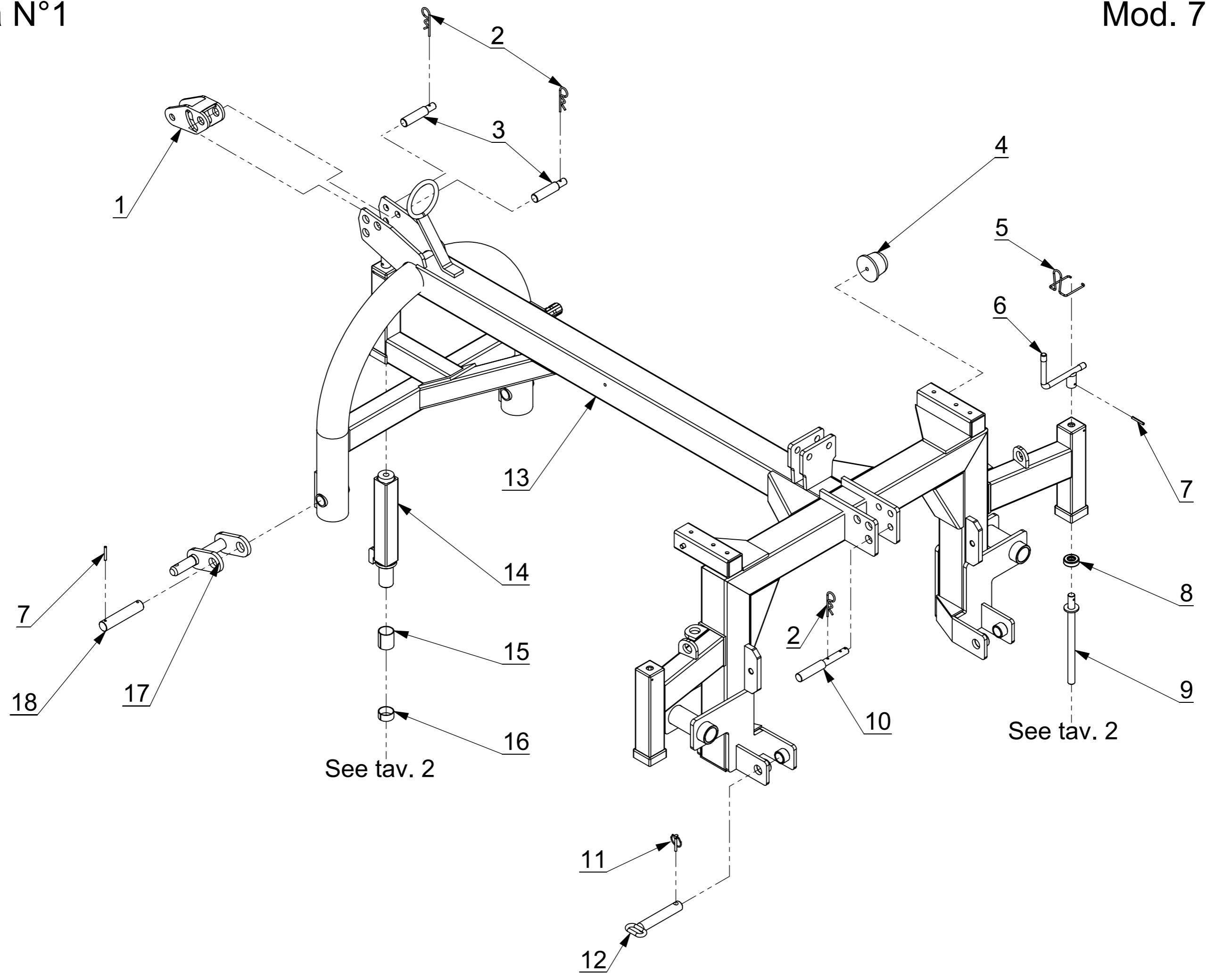
mod. **7500FP**

**Repossi** Macchine agricole s.r.l.

Via V. Emanuele II, 40 - 27022 Casorate Primo (PV) - Italia

Tel. \*\*39 02 905 66 25 - Fax \*\*39 02 905 13 08

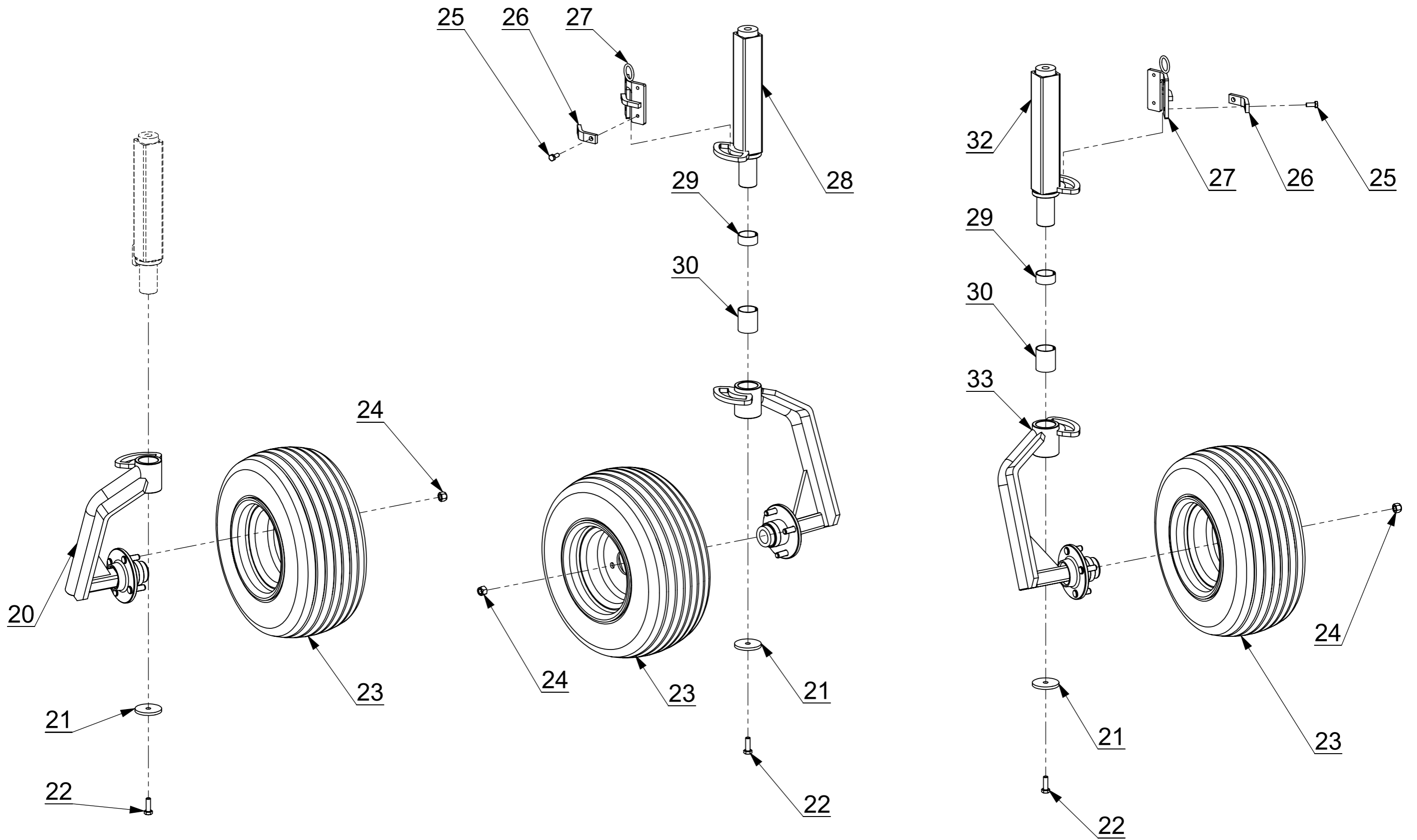
e-mail: [info@repossi.it](mailto:info@repossi.it) - Web: [www.repossi.it](http://www.repossi.it)



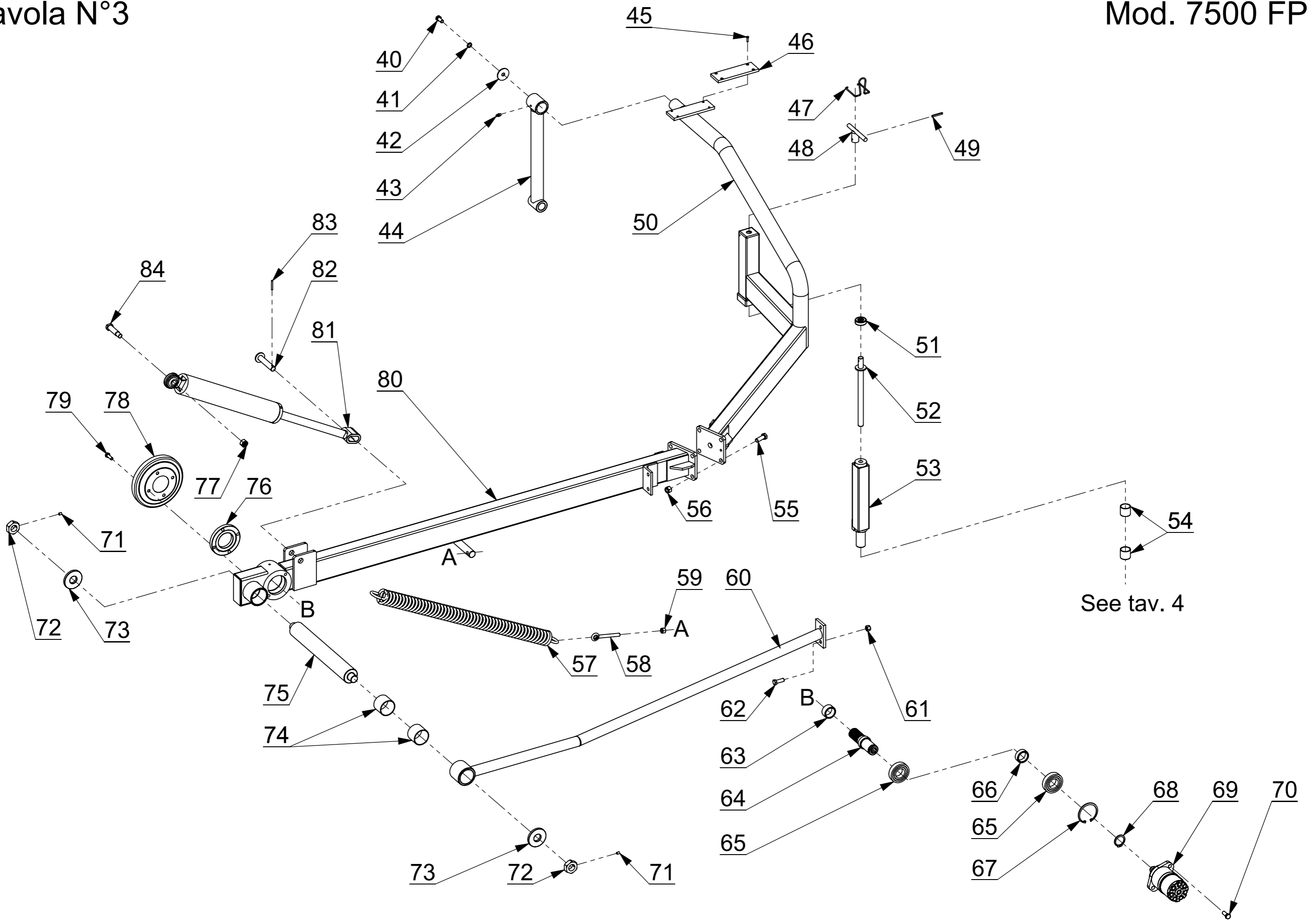
<b>Pos.</b>	<b>Part number</b>	<b>Description</b>
1	09.00.1351.00	Third point articulation
2	03.05.0004.00	β cotter ø4
3	09.00.1352.00	3° point pin
4	03.10.8060.12	M12 bumper
5	01.15.1149.02	Locking handle spring
6	01.15.1149.01	Height adjustment handle
7	03.11.0645.00	Elastic pin 6x45 uni 6873
8	01.15.0001.01	Thrust bearing for foot
9	01.15.1149.03	Screw for the height adjustment of the swivel wheel
10	09.00.1434.00	Third point pin
11	03.04.0010.00	Plug snap ø 10
12	09.00.1901.00	Lifter pin
13	09.00.3700.00	Main frame Mod. 7500FP
14	09.04.1149.00	Internal foot with limited rotation and ø35 pin
15	03.15.4050.00	Sintered bush 40x44x50
16	03.15.4020.00	Sintered bush 40x44x20
17	09.00.1503.00	Power lift attachment
18	09.00.1502.00	Power lift pin

# Tavola N°2

# Mod. 7500 FP



<b>Pos.</b>	<b>Part number</b>	<b>Description</b>
20	09.00.2402.06	Front swiveling wheel fork with limited rotation (18,5x8.5-8 wheel)
21	03.07.1160.00	Washer 11x60x5
22	07.07.1030.04	Hexagonal head screw 10x30 8.8 uni 5739
23	01.06.1808.40	Complete wheel 18,5x8.50-8 with 4 holes FIAT rim
23,1	01.06.1808.01	Tire 18,5x8.50-8
23,2	01.06.1808.02	Inner tube for wheel 18,5x6.50-8
23,3	01.06.1808.03	4 hole rim for wheel 18,5x8.50-8
24	01.08.1215.00	Wheel nut M12
25	07.07.0820.05	Hexagonal head screw 8x20 8.8 uni 5739 zinc plated
26	09.00.1910.00	Wheel locks fixing plate
27	09.00.1909.00	Swivel wheels locking
28	09.04.1149.06	Internal left foot with limited rotation and ø40 pin
29	03.15.4020.00	Sintered bush 40x44x20
30	03.15.4050.00	Sintered bush 40x44x50
31	09.00.2402.08	Rear left swiveling wheel fork with limited rotation (18,5x8.5-8 wheel)
32	09.04.1149.05	Internal right foot with limited rotation and ø40 pin
33	09.00.2402.07	Rear right swiveling wheel fork with limited rotation (18,5x8.5-8 wheel)



Pos.	Part number	Description
40	07.07.1225.05	Hexagonal head screw 12x25 8.8 uni 5739 zinc plated
41	03.08.0012.03	Lock washer ø12 DIN 6798j zinc plated
42	03.07.1350.01	Washer 13x50x3 zinc plated
43	03.13.0008.00	Greaser
44	09.00.0099.14	Reinforced straight arm
45	07.09.0520.00	Flathead screw 5x20 UNI 7688 zinc plated
46	01.99.3627.00	Rubber buffer
47	01.15.1149.02	Locking handle spring
48	01.15.1149.01	Height adjustment handle
49	03.11.0645.01	Elastic pin 6x45 uni 6873 zinc plated
50,1	09.00.3503.00	Front right rake frame (external part) for wheel 16x6.50-5
50,2	09.00.3504.00	Front left rake frame (external part) for wheel 16x6.50-5
51	01.15.1149.04	Thrust bearing for foot
52	01.15.1149.03	Screw for the height adjustment of the swivel wheel
53	09.04.1149.00	Internal foot with limited rotation and ø35 pin
53,1	09.04.1149.08	Internal right foot with limited rotation and ø35 pin
53,2	09.04.1149.09	Internal left foot with limited rotation and ø35 pin
54	03.15.3535.00	Sintered bush 35x39x35
55	07.07.1440.05	Hexagonal head screw 14x40 8.8 uni 5739 zinc plated
56	07.02.0014.01	Self-locking nut M 14
57	03.05.1908.00	Raking group spring
58	01.16.0012.05	Eye tie rod M12
59	07.01.0012.05	Nut M12 UNI 5588 zinc plated
60	09.00.3702.00	Rear reinforcement
61	07.02.0012.01	Self-locking nut M 12

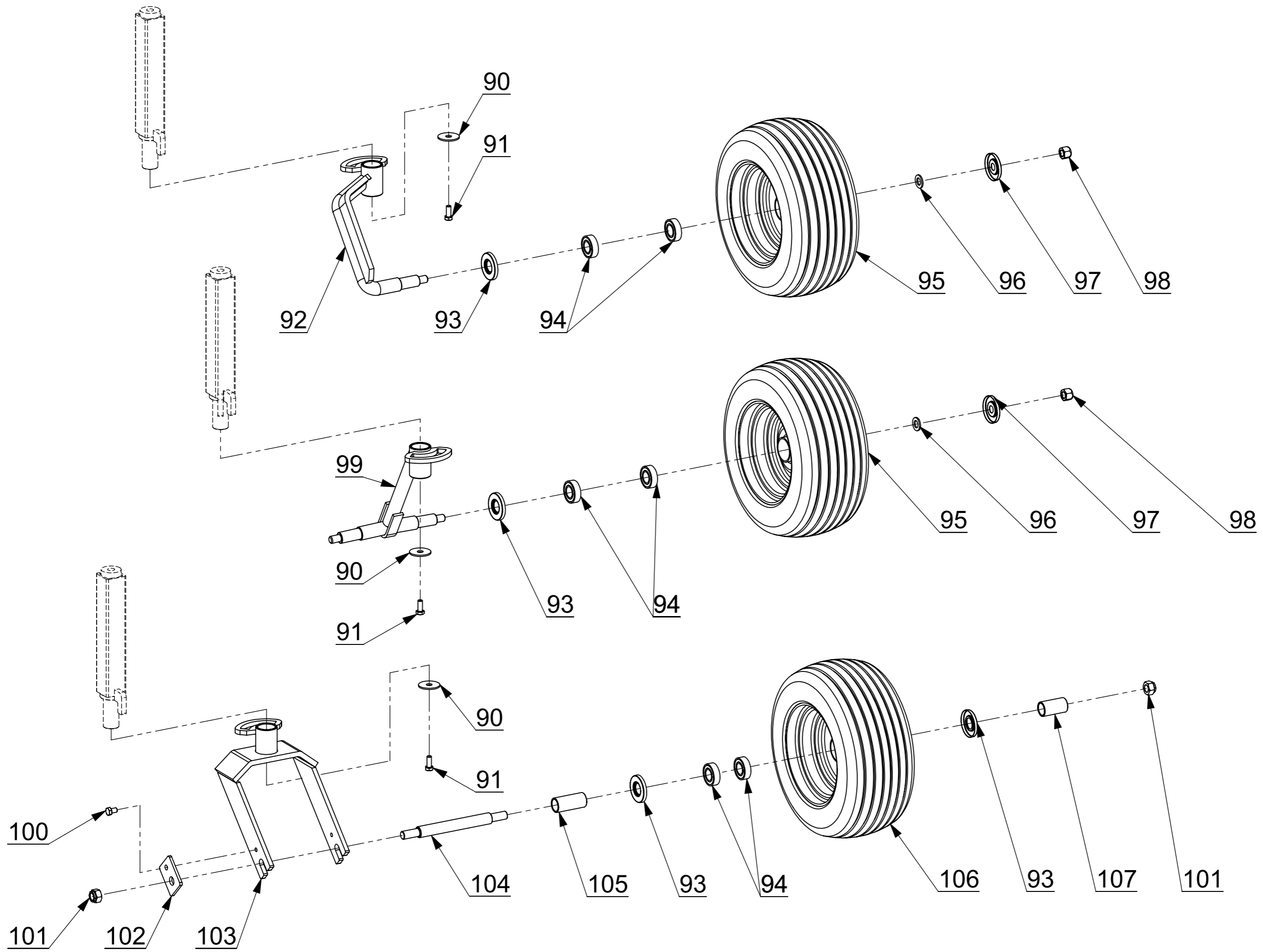
62	07.07.1235.04	Hexagonal head screw 12x35 8.8 uni 5739
63	09.00.0482.00	External spacer 50x40x25
64	09.00.0481.01	Crosswise center shaft for hydraulic motor
65	03.03.6208.00	Bearing 6208 - 40x80x18
66	09.00.0484.09	Internal spacer 50x40x18
67	03.09.0080.01	Snap ring 80i UNI 7437
68	03.09.0040.00	Snap ring 40e UNI 7435
69	04.01.0315.00	Hydraulic motor 315cc (OMP/EPM SH)
69,1	04.01.0001.90	Hydraulic motor gasket kit (epm - omp)
70	07.07.1230.04	Hexagonal head screw 12x30 8.8 uni 5739
71	07.08.0812.01	Cone point socket set screw 8x12 UNI 5927
72	07.01.0018.08	Nut M18 UNI 5589
73	09.00.3557.00	Washer for ø 60 hinge pin
74	03.15.6050.00	Sintered bush 60x65x50
75	09.00.3505.11	ø 60 hinge pin
76	02.01.1056.00	Aluminum flange
77	07.02.0016.01	Self-locking nut M 16
78	06.03.0052.04	Crosswise protection cap with 4 holes
79	07.07.1030.04	Hexagonal head screw 10x30 8.8 uni 5739
80,1	09.00.3501.00	Front right rake frame (internal part) with ø60 hinge and L=1820 reinforcement
80,2	09.00.3502.00	Front left rake frame (internal part) with ø60 hinge and L=1820 reinforcement
81	04.09.0017.02	Hydraulic cylinder for raking group
81,1	04.09.0003.90	Cylinder gasket kit
82	09.00.1165.00	Cylinder and drawbar pin
83	03.11.0540.01	Elastic pin 5x40 uni 6873 zinc plated

---

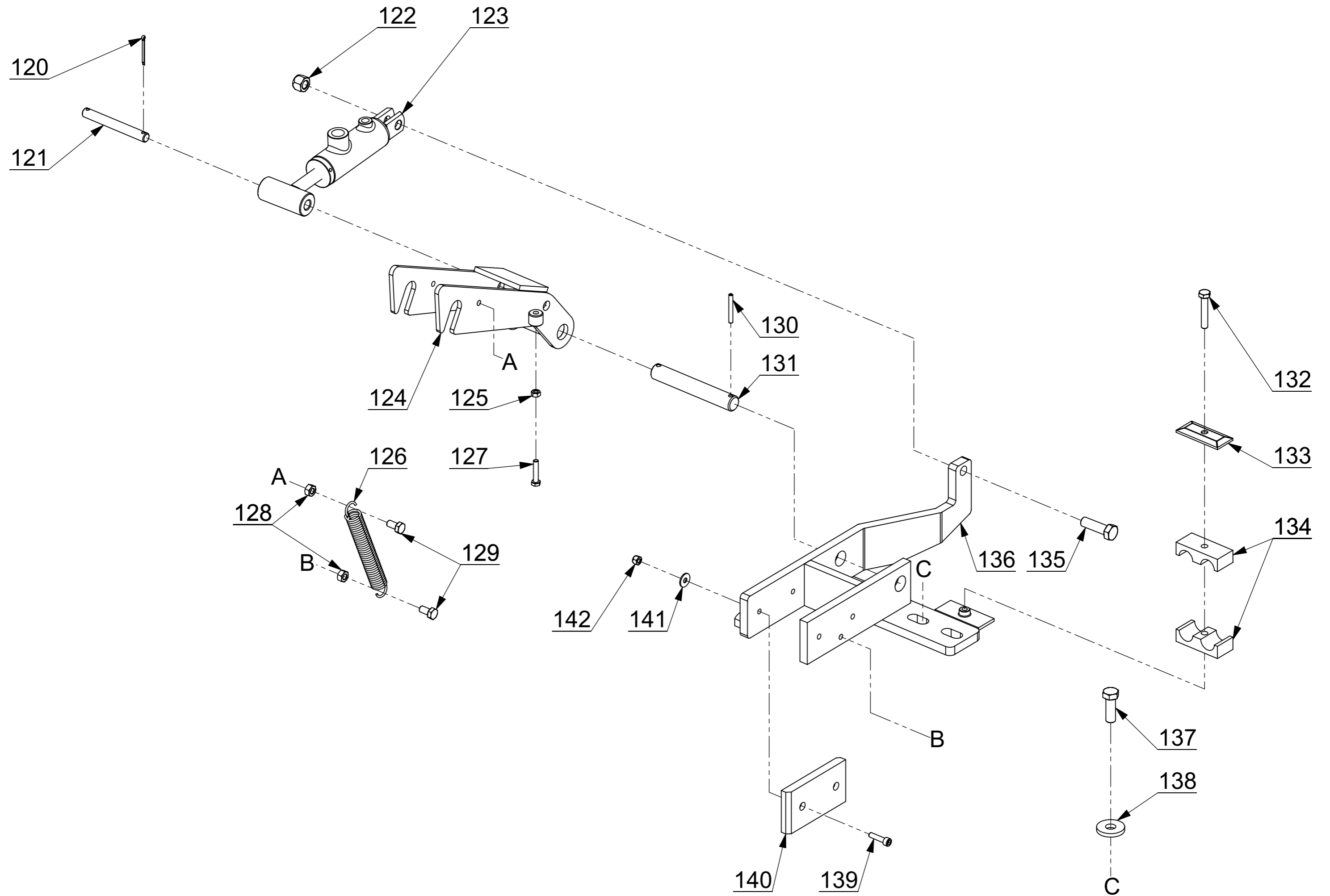
<b>Pos.</b>	<b>Part number</b>	<b>Description</b>
84	09.00.1130.00	Cylinder pin

---

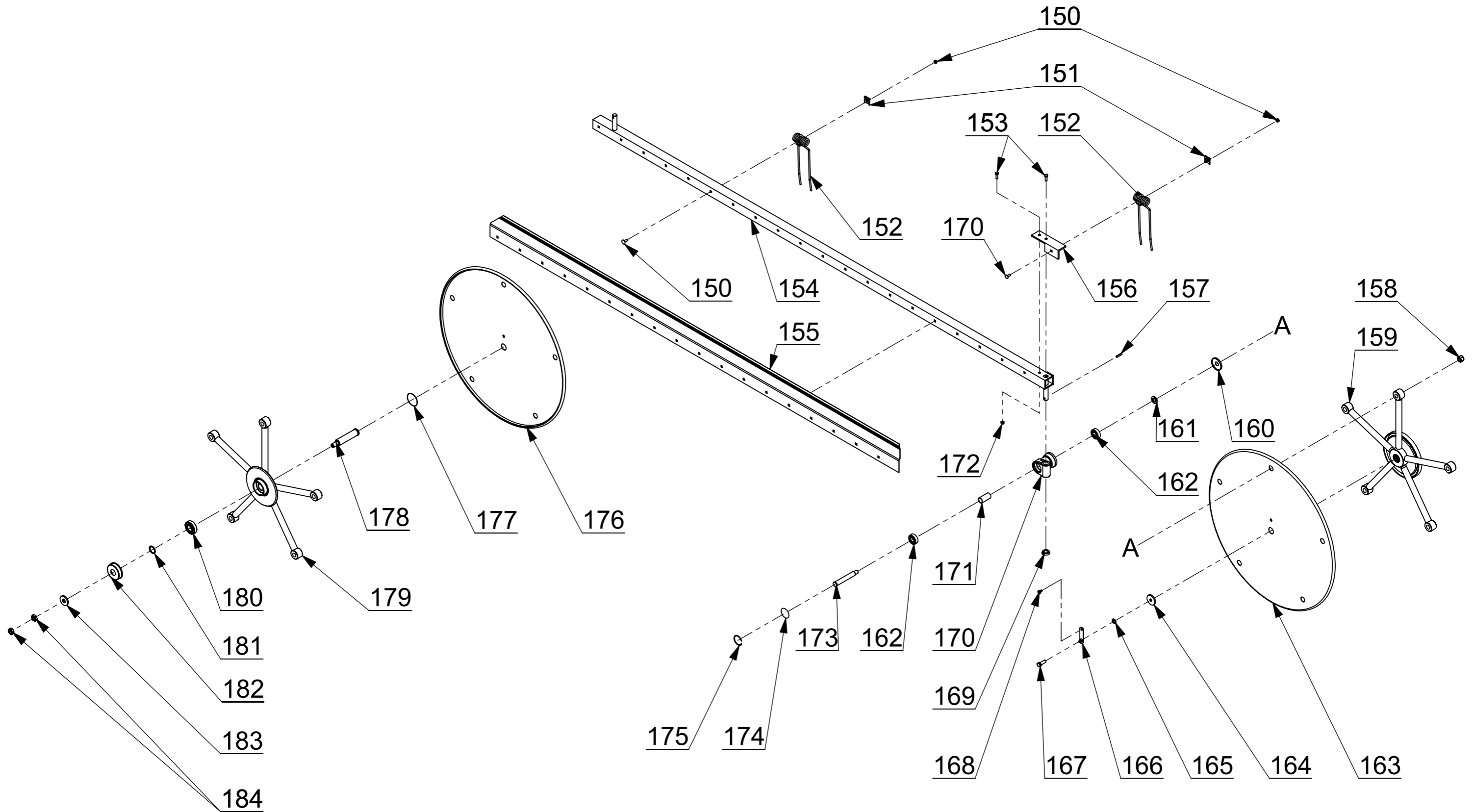




<b>Pos.</b>	<b>Part number</b>	<b>Description</b>
90	03.07.1348.00	Washer 13x48x3
91	07.07.1025.04	Hexagonal head screw 10x25 8.8 uni 5739
92	09.00.3004.00	Swivel wheels fork with limited rotation
93	01.06.0025.00	Internal cap
94	03.03.6205.02	Bearing 6205 2RS - 25x52x15
95	01.06.1506.00	Complete wheel 15x6.00-6
95,1	01.06.1506.01	Tire 15x6.00-6
95,2	01.06.1506.02	Inner tube for wheel 15x6.00-6
96	03.06.1730.00	Washer ø 16 UNI 6592 (17x30x3)
97	01.06.0016.00	External cap
98	07.02.0016.01	Self-locking nut M 16
99	09.00.3619.00	Twin swiveling wheels fork (7500C - 7500P)
100	07.07.1016.04	Hexagonal head screw 10x16 8.8 uni 5739
101	07.02.0018.01	Self-locking nut M 18
102	09.00.1957.00	Fork pin fixing plate for 16x6.50-8 and 15x6.00-6 wheel
103	09.00.3566.00	Wheel fork for 16x6.50-8 wheel with bushing ø 35
104	09.00.1954.00	Fork wheel pin for 16x6.50-8 wheel
105	09.00.1956.00	Short spacer for wheel 16x6.50-8 fork
106	01.06.1608.00	Complete wheel 16x6.50-8
106,1	01.06.1608.01	Tire 16x6.50-8
106,2	01.06.1608.02	Inner tube for wheel 16x6.50-8
108	09.00.1955.00	Long spacer for wheel 16x6.50-8 fork

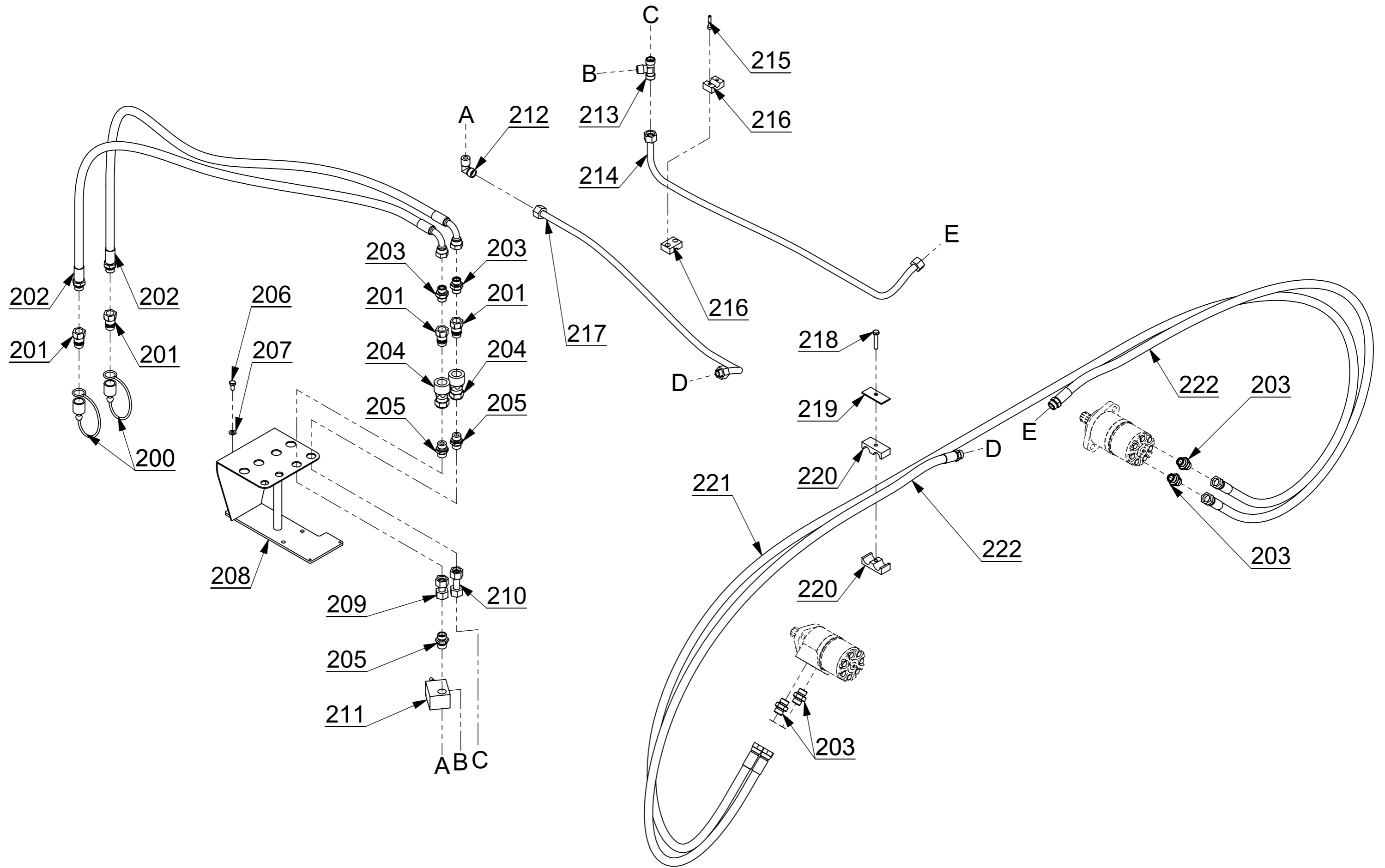


<b>Pos.</b>	<b>Part number</b>	<b>Description</b>
120	03.02.3030.01	Split pin 3x30 UNI1336 zinc plated
121	09.00.3559.00	Connecting pin
122	07.02.0012.01	Self-locking nut M 12
123	04.09.0026.01	Hydraulic cylinder for safety hook
124	09.00.3551.00	Safety hook
125	07.01.0006.05	Nut M6 UNI 5588 zinc plated
126	03.05.0347.00	Return spring
127	07.07.0620.05	Hexagonal head screw 6x20 uni 5739 zinc plated
128	07.01.0008.05	Nut M8 UNI 5588 zinc plated
129	07.07.0816.05	Hexagonal head screw 8x16 8.8 uni 5739 zinc plated
130	03.11.0540.00	Elastic pin 5x40 uni 6873
131	09.00.3564.00	Safety hook connecting pin
132	07.07.0845.02	Hexagonal head screw 8x45 8.8 uni 5737 zinc plated
133	04.07.2020.01	Upper CF3 plate (20-20 and 22-22) zinc plated
134	04.07.2020.00	Hold pipe collar CF3 20-20
135	07.07.1240.01	Hexagonal head screw 12x40 8.8 uni 5739
136,1	09.00.3621.00	Right safety hook support
136,2	09.00.3621.01	Left safety hook support
137	07.07.1235.05	Hexagonal head screw 12x35 8.8 uni 5739 zinc plated
138	03.07.1235.01	Washer 12,5x35x5 zinc plated
139	07.03.0625.02	Socket head screw 6x25 UNI 5931 zinc plated
140	01.14.3552.00	Derling plate
141	03.06.0618.01	Washer ø 6 UNI 6593 (6,2x18x1,6) zinc plated
142	07.02.0006.01	Self-locking nut M 6



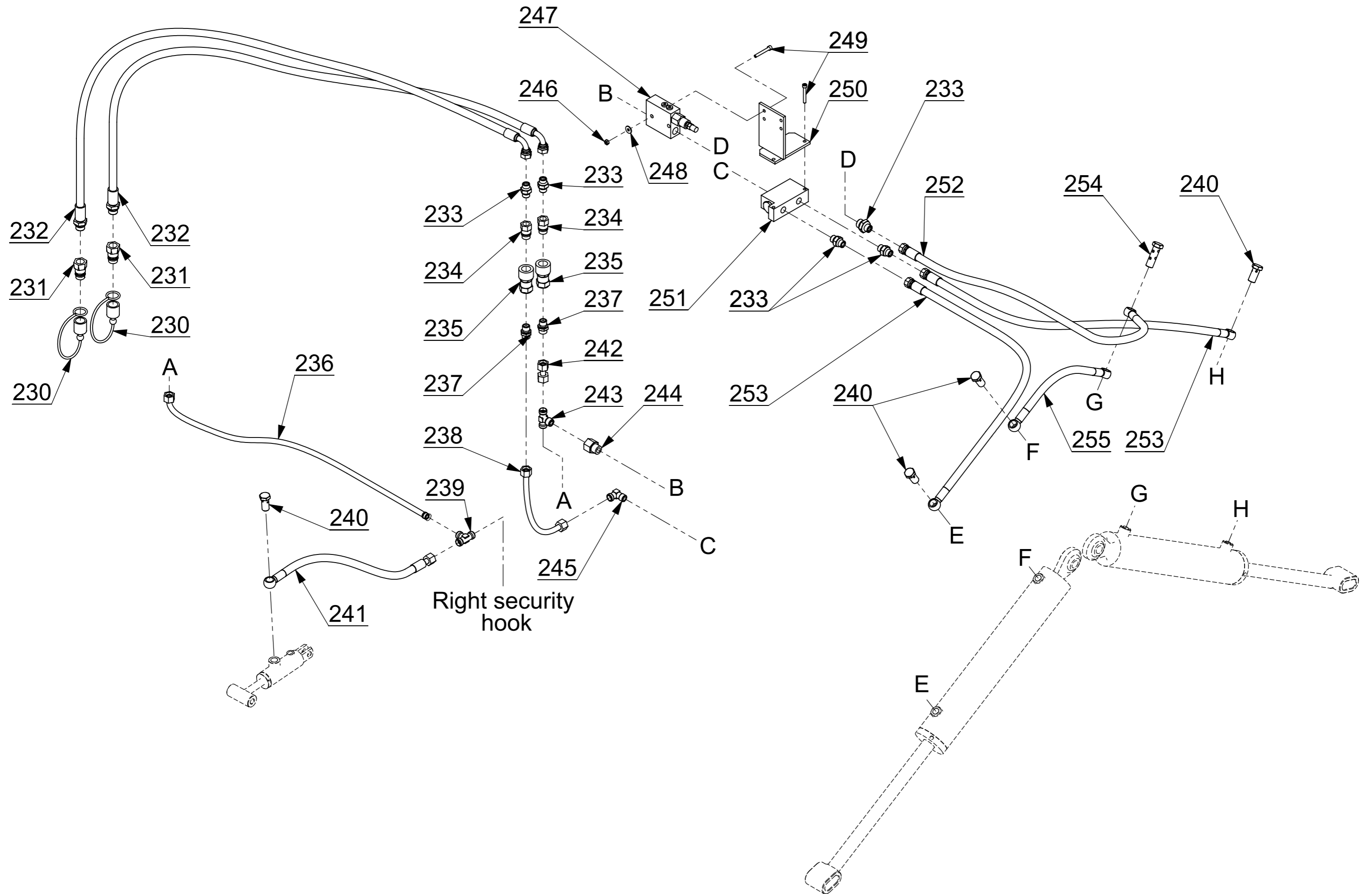
Pos.	Part number	Description
150	07.06.0823.00	Round head square neck bolt 8x23 8.8 with Self-locking nut
151	06.02.0123.00	Spring locking plate
152,1	03.05.0122.00	Double spring for left side windrow
152,2	03.05.0122.01	Double spring for right side windrow
153	07.07.0825.05	Hexagonal head screw 8x25 8.8 uni 5739 zinc plated
154,1	09.00.2413.55	Reel angle-bar for left side windrow (20 springs)
154,2	09.00.2413.57	Complete reel for left side windrow (20 springs)
154,3	09.00.2413.05	Reel angle-bar for right side windrow (20 springs)
154,4	09.00.2413.06	Complete reel for right side windrow (20 springs)
155,1	11.020.0121.15	Plate for 20 springs reel - left windrow
155,2	11.020.0121.51	Plate for 20 springs reel - right windrow
156,1	09.02.2414.03	Support for additional spring - 20 springs reel - left side windrow
156,2	09.02.2414.04	Support for additional spring - 20 springs reel - right side windrow
156,3	09.00.2414.03	Additional front spring (left windrow) with support (20 springs)
156,4	09.00.2414.04	Additional front spring (right windrow) with support (20 springs)
157	03.11.0732.01	Elastic pin 7x32 uni 6873 zinc plated
158	07.02.0016.01	Self-locking nut M 16
159	09.00.0054.05	Driving crosswise 5 reels oleodinamic
160	01.14.0075.00	Rear reel support cap
161	03.07.2035.00	Washer 20,5x35x4
162	03.03.6204.02	Bearing 6204/2RS - 20x47x14
163	09.00.0055.05	5 holes plate
164	03.07.1345.01	Washer 13x45x5 zinc plated
165	03.08.0012.03	Lock washer ø12 DIN 6798j zinc plated
166	06.02.0070.00	Crosswise lock plate

167	07.07.1235.05	Hexagonal head screw 12x35 8.8 uni 5739 zinc plated
168	07.07.0810.05	Hexagonal head screw 8x10 8.8 uni 5739 zinc plated
169	06.02.0125.00	Zinc plater lock washer
170	01.14.0078.00	Reel support
170,1	09.00.0078.00	Complete reel support
171	09.00.0082.00	Reel support spacer
172	07.02.0008.01	Self-locking nut M 8
173	09.00.0084.00	Reel support pin
174	06.02.0085.00	Reel support crowned cap
175	03.09.0053.00	Snap ring WA-SB 53
176	09.00.0055.50	5 holes plate with domed centre
177	06.02.0091.00	Crosswise crowned cap
178	09.00.1192.00	Driven crosswise center pin
179	09.00.0095.05	Driven crosswise 5 reels
180	03.03.6206.00	Bearing 6206 - 30x62x16
181	09.00.0097.00	Crosswise rear spacer
182	06.02.0098.00	Rear crosswise cap
183	03.07.1948.00	Washer 19x48x6
184	07.01.0018.08	Nut M18 UNI 5589



<b>Pos.</b>	<b>Part number</b>	<b>Description</b>
200	04.15.0012.04	Cover for quick-release coupling male 1/2" red
201	04.15.0012.01	Quick-release coupling male 1/2"
202	04.19.2650.00	Rubber pipe
203	04.13.0012.01	Nipple 1/2" - 1/2"
204	04.15.0012.02	Quick-release coupling female 1/2"
205	04.14.0092.15	Pipe fitting DIN TN 92 - 15 LR
206	07.07.0816.05	Hexagonal head screw 8x16 8.8 uni 5739 zinc plated
207	03.06.0817.01	Washer ø 8 UNI 6592 (8,4x17x1,6) zinc plated
208	09.00.1906.00	Support plate for valves and quick-release coupling
209	09.00.1964.01	Iron pipe
210	09.00.1964.00	Iron pipe
211	04.05.0012.04	Max pressure 1/2" valve
212	04.14.0094.15	Pipe fitting DIN TN 94 - 15 LR
213	04.14.0096.15	Pipe fitting DIN TN 96 - 15 LR
214	09.00.1933.00	Iron pipe
215	07.03.0625.02	Socket head screw 6x25 UNI 5931 zinc plated
216	04.07.0015.00	Hold pipe collar C3 15
217	09.00.1932.00	Iron pipe
218	07.03.0845.02	Socket head screw 8x45 UNI 5931 zinc plated
219	04.07.2020.01	Upper CF3 plate (20-20 and 22-22) zinc plated
220	04.07.2020.00	Hold pipe collar CF3 20-20
221	04.19.3330.00	Rubber pipe
222	04.19.1370.00	Rubber pipe





Pos.	Part number	Description
230	04.15.0012.04	Cover for quick-release coupling male 1/2" red
231	04.15.0012.01	Quick-release coupling male 1/2"
232	04.18.2650.00	Rubber pipe
233	04.13.0038.01	Nipple 3/8" - 3/8"
234	04.15.0038.01	Quick-release coupling male 3/8"
235	04.15.0038.02	Quick-release coupling female 3/8"
236	09.00.1935.00	Iron pipe
237	04.14.0092.12	Pipe fitting DIN TN 92 - 12 LR
238	09.00.1934.00	Iron pipe
239	04.14.0100.12	Pipe fitting DIN TN 100 - 12 L
240	04.13.0038.03	Hollow screw 3/8"
241	04.18.0420.02	Rubber pipe
242	09.00.1229.01	Iron pipe
243	04.14.0096.12	Pipe fitting DIN TN 96 - 12 LR
244	04.13.1238.04	Pipe fitting Male 1/2" - Female 3/8"
245	04.14.0094.12	Pipe fitting DIN TN 94 - 12 LR
246	07.02.0006.01	Self-locking nut M 6
247	04.05.0012.08	Sequence valve
248	03.06.0618.01	Washer ø 6 UNI 6593 (6,2x18x1,6) zinc plated
249	07.03.0645.02	Socket head screw 6x45 UNI 5931 zinc plated
250	09.00.1952.00	Sequence valve support
251	04.05.3811.01	Flow divisor
252	04.18.1100.01	Rubber pipe
253	04.18.1300.03	Rubber pipe
254	04.13.1038.03	Double hollow screw 3/8"

255      04.18.0450.01    Rubber pipe