

Repossi
macchine agricole

SPARE PARTS CATALOGUE

COMB RAKE

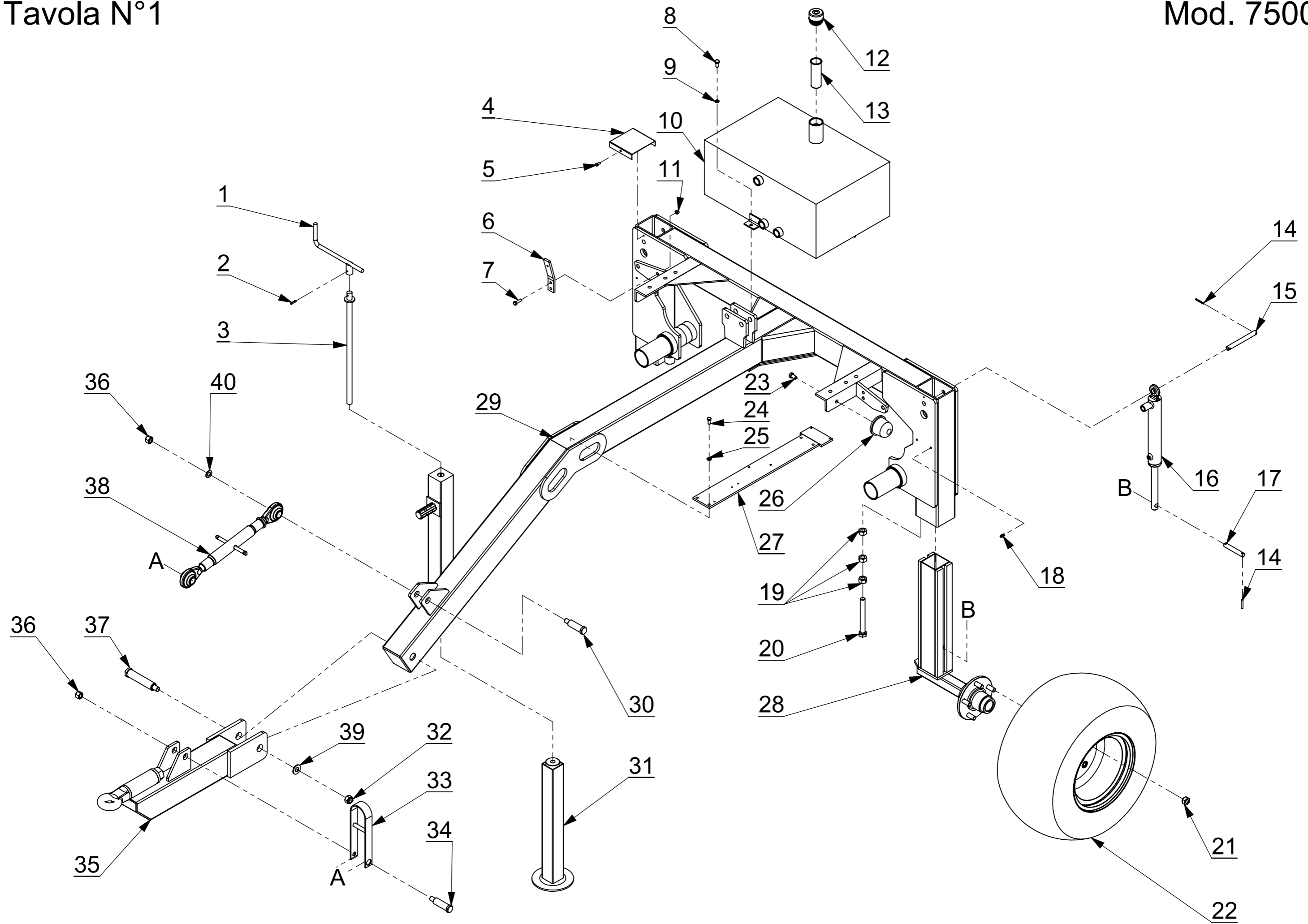
mod. **7500 C**

Repossi Macchine agricole s.r.l.

Via V. Emanuele II, 40 - 27022 Casorate Primo (PV) - Italia

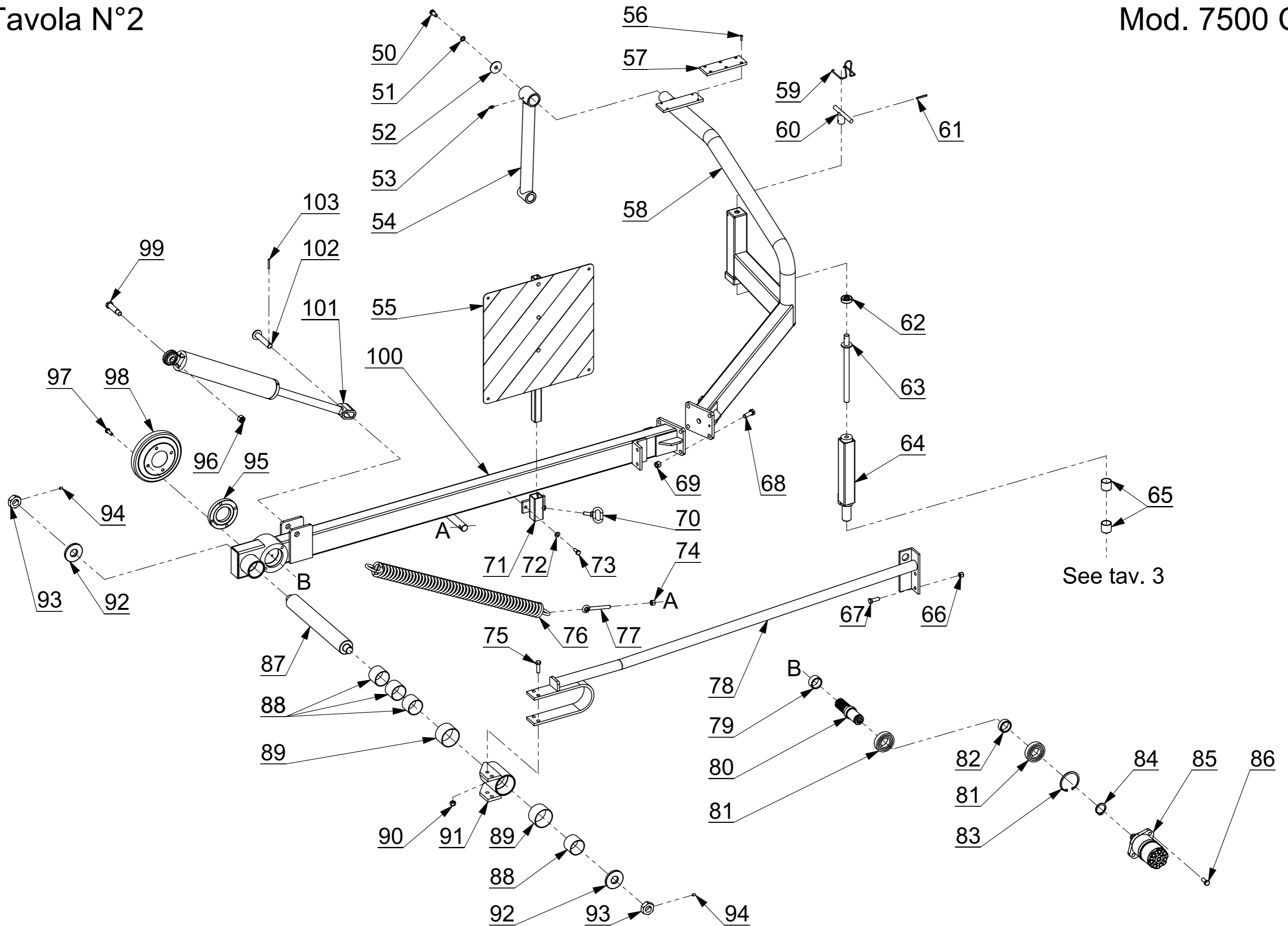
Tel. **39 02 905 66 25 - Fax **39 02 905 13 08

e-mail: info@repossi.it - Web: www.repossi.it



Pos.	Code	Description
1	01.15.1132.01	Support foot adjustment handle
2	03.11.0625.00	Elastic pin 6x25 zinc plated
3	01.15.1132.03	Support foot height adjustment screw
4	11.015.3550.00	Rear frame cover
5	07.07.0616.04	Hexagonal head screw 6x16 uni 5739
6	09.00.3623.00	Collar clamps plate fixing
7	07.07.0830.04	Hexagonal head screw 8x30 8.8 uni 5739
8	07.07.1020.05	Hexagonal head screw 10x20 8.8 uni 5739 zinc plated
9	03.08.0010.01	Grower washer ø10 DIN 7980 zinc plated
10	09.00.3651.00	60 Lt. tank (specify if for 7500C-7500L)
11	07.02.0008.01	Self-locking nut M 8
12,1	01.17.0456.01	Tank double bleed female cap
12,2	01.17.0456.04	Tank male cap with double bleed valve
13	01.17.0456.02	Oil inlet filter
14	03.11.0540.00	Elastic pin 5x40
15	09.00.3555.00	Upper pin
16	04.09.0010.01	Simple effect cylinder for wheels lift
17	09.00.1133.00	Lower pin
18	03.13.0008.00	Greaser
19	07.01.0018.04	Nut M18 UNI 5588
20	07.07.1816.04	Hexagonal head screw 18x160 8.8 uni 5739
21	01.08.1615.00	Wheel nut M16
22	01.06.2612.50	Complete wheel 26x12.00-12 T/M with 5 holes international rim
22,1	01.06.2612.01	Tire 26x12.00-15 T/M
22,2	01.06.2612.02	Inner tube for wheel 26x12.00-15

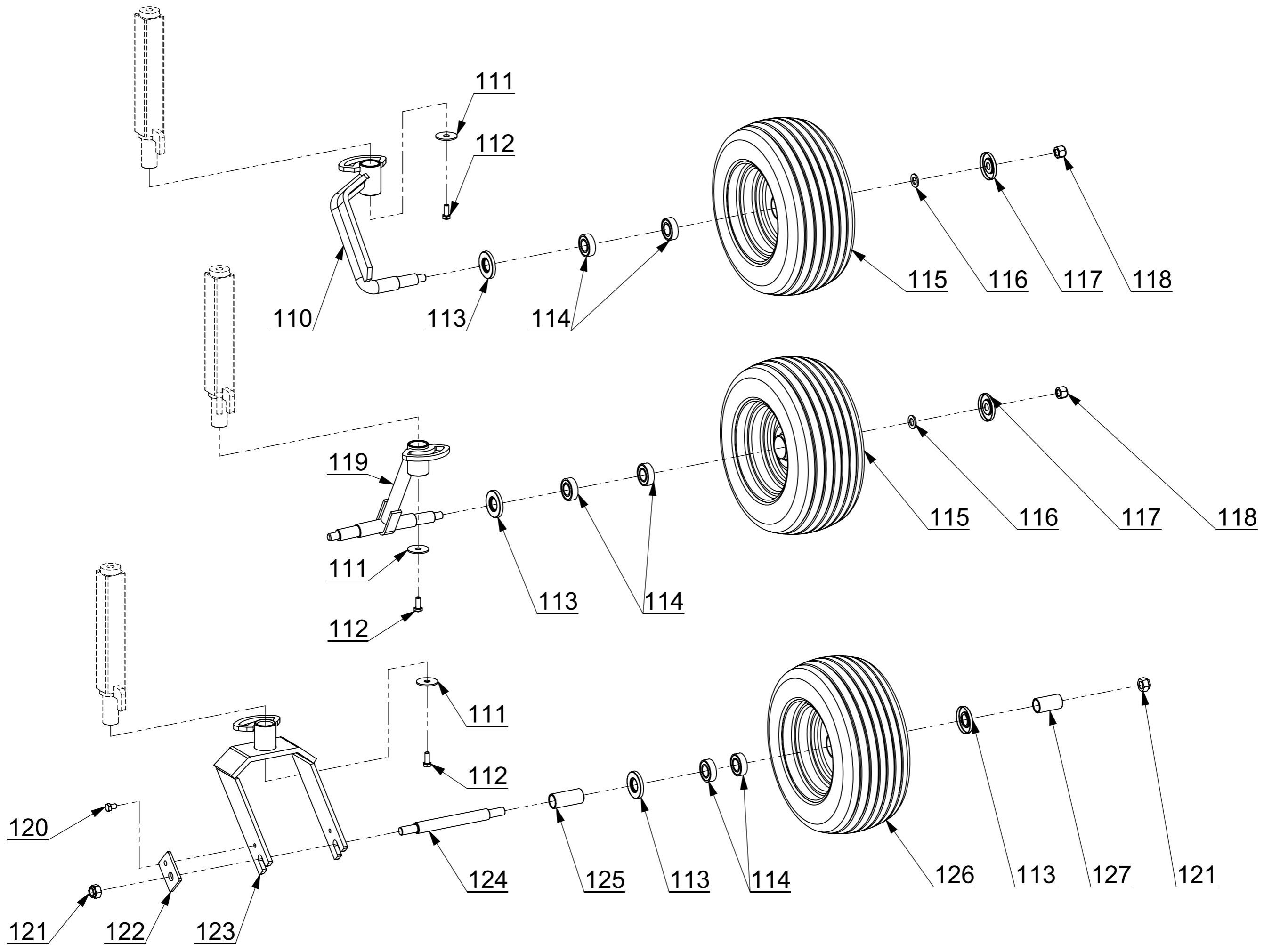
22,3	01.06.2612.03	5 hole rim for wheel 26x12.00-12
23	07.07.1216.05	Hexagonal head screw 12x16 8.8 uni 5739 zinc plated
24	07.07.0820.05	Hexagonal head screw 8x20 8.8 uni 5739 zinc plated
25	03.06.0817.01	Washer ø 8 UNI 6592 (8,4x17x1,6) zinc plated
26	03.10.8060.12	M12 bumper
27	09.00.3532.00	Valves fixing plate
28	09.00.3520.00	Sliding foot for 26x12.00-12 wheel
28,1	03.03.0206.03	Bearing 30206 - 30x62x16
28,2	03.03.0208.03	Bearing 30208 - CLA - 40x80x18
28,3	01.08.0016.00	Special nut M16x1,5x45
29,1	09.00.3600.11	Main frame for mod. 7500C with ø 60 hinge
29,2	09.00.3600.00	Main frame for mod. 7500C with ø 40 hinge
30	09.00.1126.01	Tie rod pin fixation to the main frame
31	01.15.1132.00	Foot
32	07.02.0018.01	Self-locking nut M 18
33	09.00.1128.99	Bowden control and pipe guide
34	09.00.1126.02	Tie rod pin fixation to the drawbar
35	09.00.1142.00	Drawbar
36	07.02.0016.01	Self-locking nut M 16
37	09.00.1148.00	Drawbar pin
38	01.16.0027.03	Adjustment tie rod
39	03.06.1939.00	Washer ø 18 (19 x 39 x 3.5)
40	03.06.1730.01	Washer ø 16 UNI 6592 (17x30x3) zinc plated



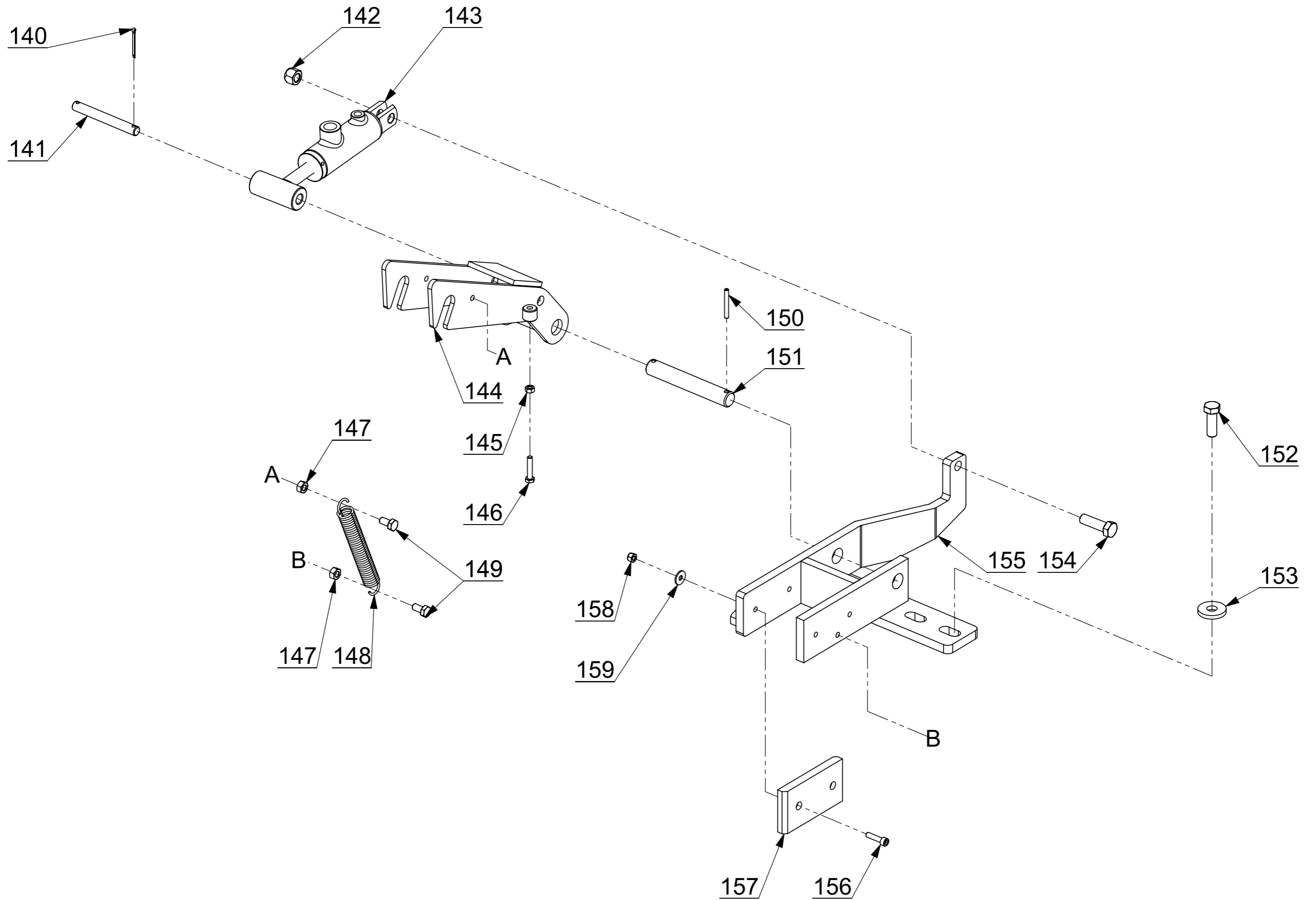
Pos.	Code	Description
50	07.07.1225.05	Hexagonal head screw 12x25 8.8 uni 5739 zinc plated
51	03.08.0012.03	Lock washer ø12 DIN 6798j zinc plated
52	03.07.1350.01	Washer 13x50x3 zinc plated
53	03.13.0008.00	Greaser
54	09.00.0099.00	Straight arm
55	09.00.3618.00	Sign with pole mounting
56	07.09.0520.00	Flathead screw 5x20 UNI 7688 zinc plated
57	01.99.3627.00	Rubber buffer
58,1	09.00.3503.00	Front right rake frame (external part) for wheel 16x6.50-5
58,2	09.00.3503.01	Front right rake frame (external part) for wheel 15x6.00-6
58,3	09.00.3504.00	Front left rake frame (external part) for wheel 16x6.50-5
58,4	09.00.3504.01	Front left rake frame (external part) for wheel 15x6.00-6
59	01.15.1149.02	Locking handle spring
60	01.15.1149.01	Height adjustment handle
61	03.11.0645.01	Elastic pin 6x45 zinc plated
62	01.15.1149.04	Thrust bearing for foot
63	01.15.1149.03	Screw for the height adjustment of the swivel wheel
64	09.04.1149.00	Internal foot with limited rotation and ø35 pin
64,1	09.04.1149.08	Internal right foot with limited rotation and ø35 pin
64,2	09.04.1149.09	Internal left foot with limited rotation and ø35 pin
65	03.15.3535.00	Sintered bush 35x39x35
66	07.02.0012.01	Self-locking nut M 12
67	07.07.1235.04	Hexagonal head screw 12x35 8.8 uni 5739
68	07.07.1440.05	Hexagonal head screw 14x40 8.8 uni 5739 zinc plated
69	07.02.0014.01	Self-locking nut M 14

70	07.07.1225.09	Locking handle
71	09.00.3616.00	Sign holder (to be fixed on the rake frame)
72	03.06.1021.01	Washer ø 10 UNI 6592 (10,5x21x2) zinc plated
73	07.07.1025.05	Hexagonal head screw 10x25 8.8 uni 5739 zinc plated
74	07.01.0012.05	Nut M12 UNI 5588 zincplated
75	07.07.1240.04	Hexagonal head screw 12x40 8.8 uni 5739
76	03.05.1908.00	Raking group spring
77	01.16.0012.05	Eye tie rod M12
78,1	09.00.3508.00	Rear right rake reinforcement (L=1820)
78,2	09.00.3508.02	Rear right rake reinforcement (L=1770)
78,3	09.00.3508.01	Rear left rake reinforcement (L=1820)
78,4	09.00.3508.03	Rear left rake reinforcement (L=1770)
79	09.00.0482.00	External spacer 50x40x25
80	09.00.0481.01	Crosswise center shaft for hydraulic motor
81	03.03.6208.00	Bearing 6208 - 40x80x18
82	09.00.0484.09	Internal spacer 50x40x18
83	03.09.0080.01	Snap ring 80i
84	03.09.0040.00	Snap ring 40e
85	04.01.0315.00	Hydraulic motor 315cc
85,1	04.01.0001.90	Hydraulic motor gasket kit (epm - omp)
86	07.07.1230.04	Hexagonal head screw 12x30 8.8 uni 5739
87,1	09.00.3505.11	ø 60 hinge pin
87,2	09.00.3505.00	ø 40 hinge pin
88,1	03.15.6050.00	Sintered bush 60x65x50
88,2	03.15.4050.00	Sintered bush 40x44x50

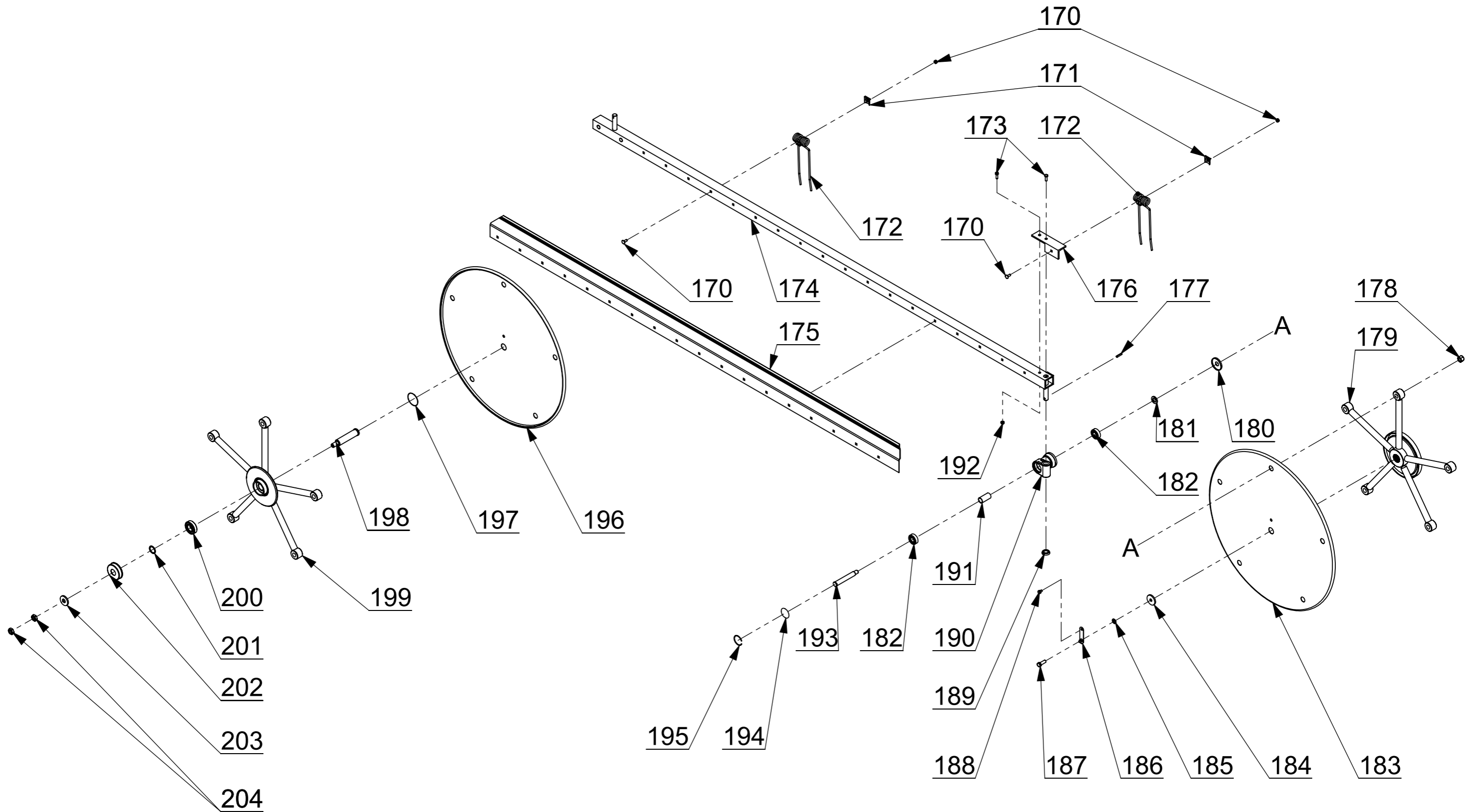
Pos.	Code	Description
89,1	03.15.7550.00	Sintered bush 75x80x50
89,2	03.15.6050.00	Sintered bush 60x65x50
90	07.02.0012.01	Self-locking nut M 12
91,1	09.00.3506.11	Reinforcement compass joint (for ø 60 hinge pin)
91,2	09.00.3506.00	Reinforcement compass joint (for ø 40 hinge pin)
92,1	09.00.3557.00	Washer for ø 60 hinge pin
92,2	03.07.1960.00	Washer 19x60x5
93,1	07.01.3015.04	Nut M30x1,5 UNI 5588
93,2	07.01.0018.08	Nut M18 UNI 5589
94	07.08.0812.01	Cone point socket set screw 8x12 UNI 5927
95	02.01.1056.00	Aluminum flange
96	07.02.0016.01	Self-locking nut M 16
97	07.07.1030.04	Hexagonal head screw 10x30 8.8 uni 5739
98	06.03.0052.04	Crosswise protection cap with 4 holes
99	09.00.1130.00	Cylinder pin
100,1	09.00.3501.00	Front right rake frame (internal part) with ø60 hinge and L=1820 reinforcement
100,2	09.00.3501.01	Front right rake frame (internal part) with ø40 hinge and L=1820 reinforcement
100,3	09.00.3501.02	Front right rake frame (internal part) with ø40 hinge and L=1770 reinforcement
100,4	09.00.3502.00	Front left rake frame (internal part) with ø60 hinge and L=1820 reinforcement
100,5	09.00.3502.01	Front left rake frame (internal part) with ø40 hinge and L=1820 reinforcement
100,6	09.00.3502.02	Front left rake frame (internal part) with ø40 hinge and L=1770 reinforcement
101	04.09.0024.02	Hydraulic cylinder for raking group
101,1	04.09.0003.90	Cylinder gasket kit
102	09.00.1165.00	Cylinder and drawbar pin
103	03.11.0540.01	Elastic pin 5x40 zinc plated



Pos.	Code	Description
110	09.00.3004.00	Swivel wheels fork with limited rotation
111	03.07.1348.00	Washer 13x48x3
112	07.07.1025.04	Hexagonal head screw 10x25 8.8 uni 5739
113	01.06.0025.00	Internal cap
114	03.03.6205.02	Bearing 6205 2RS - 25x52x15
115	01.06.1506.00	Complete wheel 15x6.00-6
115,1	01.06.1506.01	Tire 15x6.00-6
115,2	01.06.1506.02	Inner tube for wheel 15x6.00-6
115,3	01.06.1608.00	Complete wheel 16x6.50-8
115,4	01.06.1608.01	Tire 16x6.50-8
115,5	01.06.1608.02	Inner tube for wheel 16x6.50-8
116	03.06.1730.00	Washer 17x30x3
117	01.06.0016.00	External cap
118	07.02.0016.01	Self-locking nut M 16
119	09.00.3619.00	Twin swiveling wheels fork (7500C - 7500P)
120	07.07.1016.04	Hexagonal head screw 10x16 8.8 uni 5739
121	07.02.0018.01	Self-locking nut M 18
122	09.00.1957.00	Fork pin fixing plate for 16x6.50-8 wheel
123	09.00.3566.00	Wheel fork for 16x6.50-8 wheel with bushing ø 35
124	09.00.1954.00	Fork wheel pin for 16x6.50-8 wheel
125	09.00.1956.00	Short spacer for wheel 16x6.50-8 fork
126	01.06.1608.00	Complete wheel 16x6.50-8
126,1	01.06.1608.01	Tire 16x6.50-8
126,2	01.06.1608.02	Inner tube for wheel 16x6.50-8
127	09.00.1955.00	Long spacer for wheel 16x6.50-8 fork

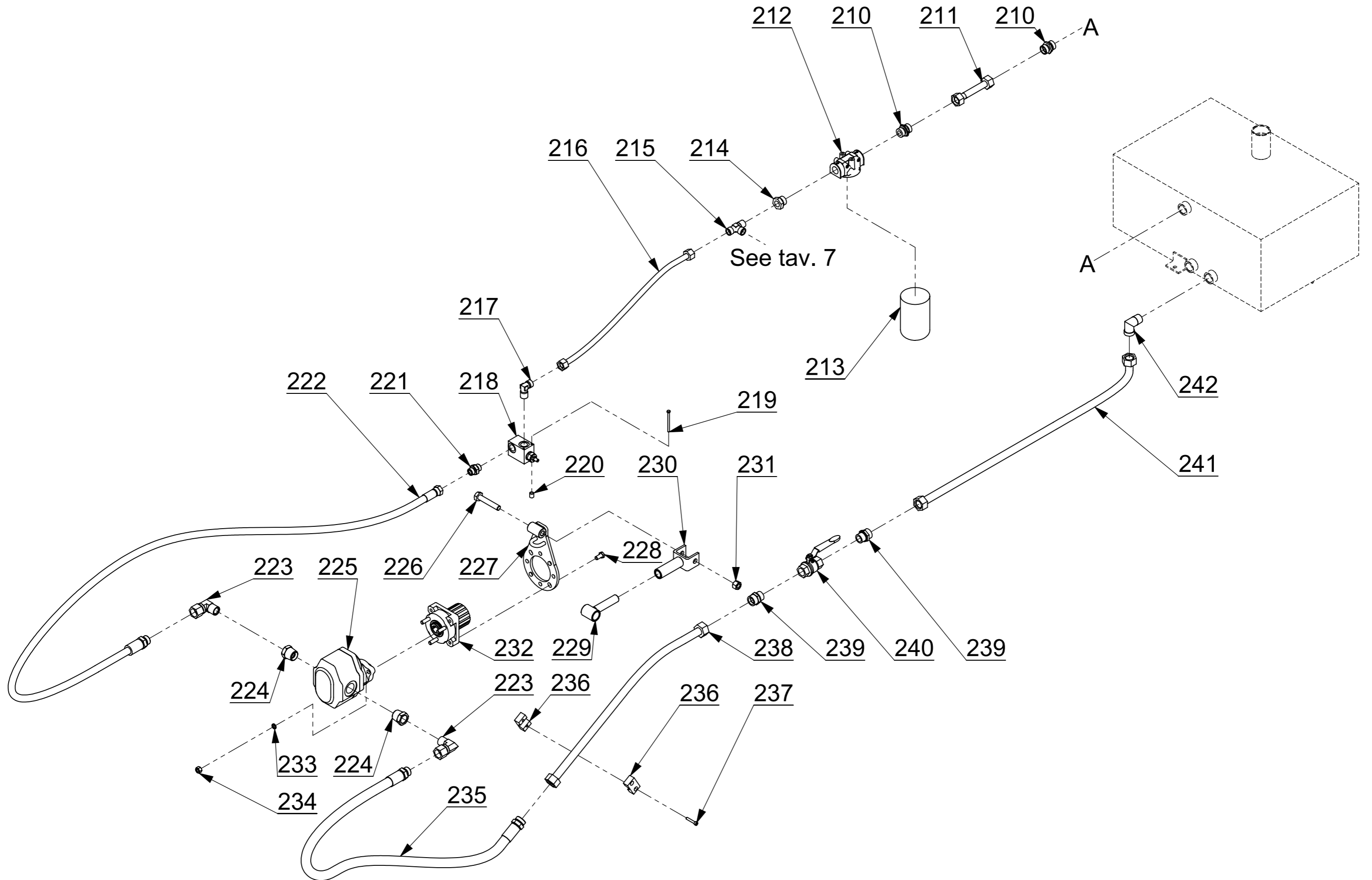


Pos.	Code	Description
140	03.02.3030.01	Split pin 3x30 UNI1336 zinc plated
141	09.00.3559.00	Connecting pin
142	07.02.0012.01	Self-locking nut M 12
143	04.09.0026.01	Simple effect cylinder for safety hook
144	09.00.3551.00	Safety hook
145	07.01.0006.05	Nut M6 UNI 5588 zinc plated
146	07.07.0620.05	Hexagonal head screw 6x20 uni 5739 zinc plated
147	07.01.0008.05	Nut M8 UNI 5588 zinc plated
148	03.05.0347.00	Return spring
149	07.07.0816.05	Hexagonal head screw 8x16 8.8 uni 5739 zinc plated
150	03.11.0540.00	Elastic pin 5x40
151	09.00.3564.00	Safety hook connecting pin
152	07.07.1235.05	Hexagonal head screw 12x35 8.8 uni 5739 zinc plated
153	03.07.1235.01	Washer 12,5x35x5 zinc plated
154	07.07.1240.01	Hexagonal head screw 12x40 8.8 uni 5739
155,1	09.00.3621.00	Right safety hook support
155,2	09.00.3621.01	Left safety hook support
156	07.03.0625.02	Socket head screw 6x25 UNI 5931 zinc plated
157	01.14.3552.00	Derling plate
158	07.02.0006.01	Self-locking nut M 6
159	03.06.0618.01	Washer \varnothing 6 UNI 6593 (6,2x18x1,6) zinc plated



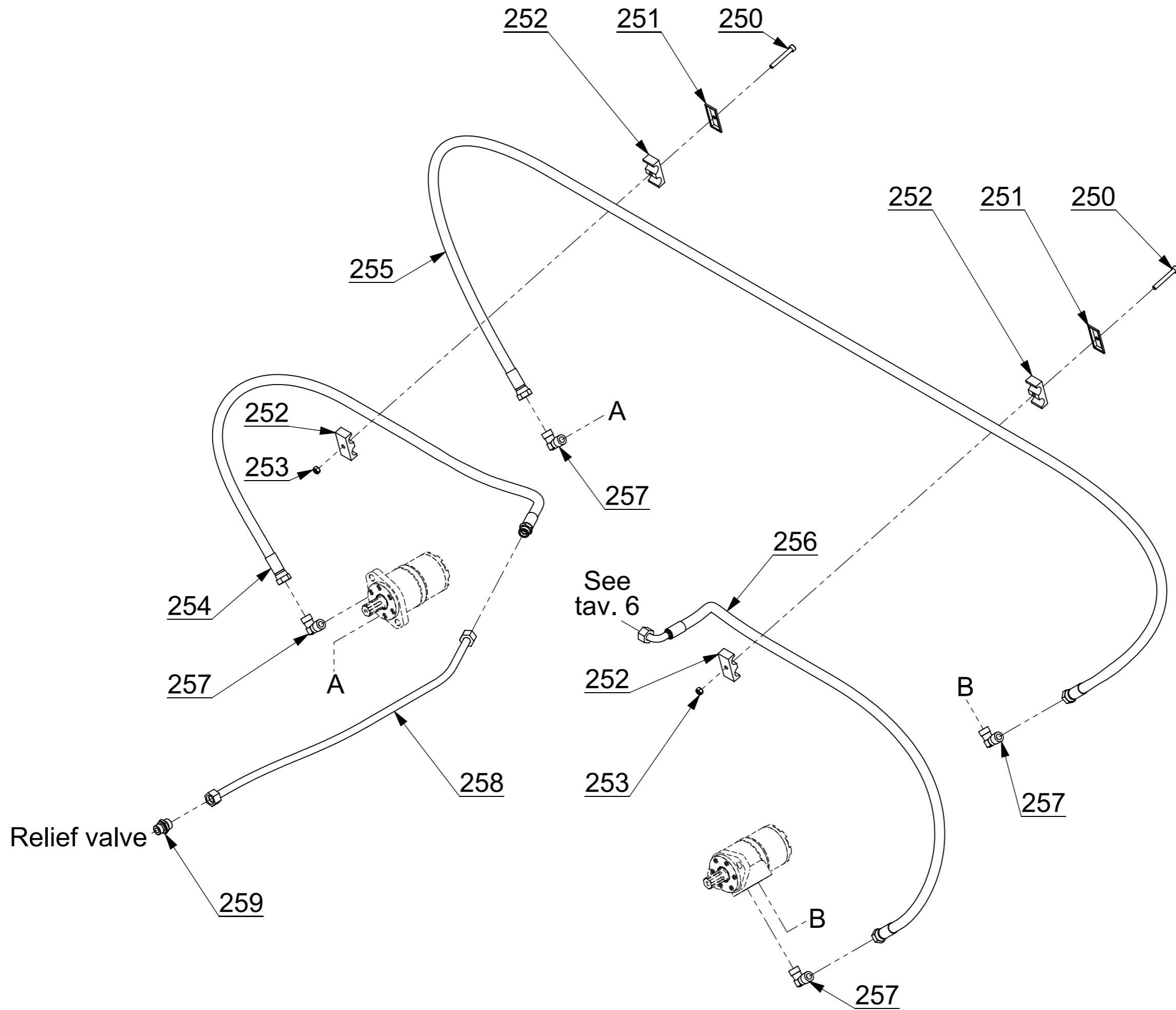
Pos.	Code	Description
170	07.02.0008.01	Self-locking nut M 8
171	06.02.0123.00	Spring locking plate
172,1	03.05.0122.00	Double spring for left side windrow
172,2	03.05.0122.01	Double spring for right side windrow
173	07.07.0825.05	Hexagonal head screw 8x25 8.8 uni 5739 zinc plated
174,1	09.00.2413.55	Reel angle-bar for left side windrow (20 springs)
174,2	09.00.2413.57	Complete reel for left side windrow (20 springs)
174,3	09.00.2413.05	Reel angle-bar for right side windrow (20 springs)
174,4	09.00.2413.06	Complete reel for right side windrow (20 springs)
175,1	11.020.0121.15	Plate for 20 springs reel - left windrow
175,2	11.020.0121.51	Plate for 20 springs reel - right windrow
176,1	09.02.2414.03	Support for additional spring - 20 springs reel - left side windrow
176,2	09.02.2414.04	Support for additional spring - 20 springs reel - right side windrow
176,3	09.00.2414.03	Additional front spring (left windrow) with support (20 springs)
176,4	09.00.2414.04	Additional front spring (right windrow) with support (20 springs)
177	03.11.0732.01	Elastic pin 7x32 zinc plated
178	07.02.0016.01	Self-locking nut M 16
179	09.00.0054.05	Driving crosswise 5 reels oleodinamic
180	01.14.0075.00	Rear reel support cap
181	03.07.2035.00	Washer 20,5x35x4
182	03.03.6204.02	Bearing 6204/2RS - 20x47x14
183	09.00.0055.05	5 holes plate
184	03.07.1345.01	Washer 13x45x5 zinc plated
185	03.08.0012.03	Lock washer ø12 DIN 6798j zinc plated
186	06.02.0070.00	Crosswise lock plate

187	07.07.1235.05	Hexagonal head screw 12x35 8.8 uni 5739 zinc plated
188	07.07.0810.05	Hexagonal head screw 8x10 8.8 uni 5739 zinc plated
189	06.02.0125.00	Zinc plater lock washer
190	01.14.0078.00	Reel support
190,1	09.00.0078.00	Complete reel support
191	09.00.0082.00	Reel support spacer
192	07.02.0008.01	Self-locking nut M 8
193	09.00.0084.00	Reel support pin
194	06.02.0085.00	Reel support crowned cap
195	03.09.0053.00	Snap ring WA-SB 53
196	09.00.0055.50	5 holes plate with domed centre
197	06.02.0091.00	Crosswise crowned cap
198	09.00.1192.00	Driven crosswise center pin
199	09.00.0095.05	Driven crosswise 5 reels
200	03.03.6206.00	Bearing 6206 - 30x62x16
201	09.00.0097.00	Crosswise rear spacer
202	06.02.0098.00	Rear crosswise cap
203	03.07.1948.00	Washer 19x48x6
204	07.01.0018.08	Nut M18 UNI 5589

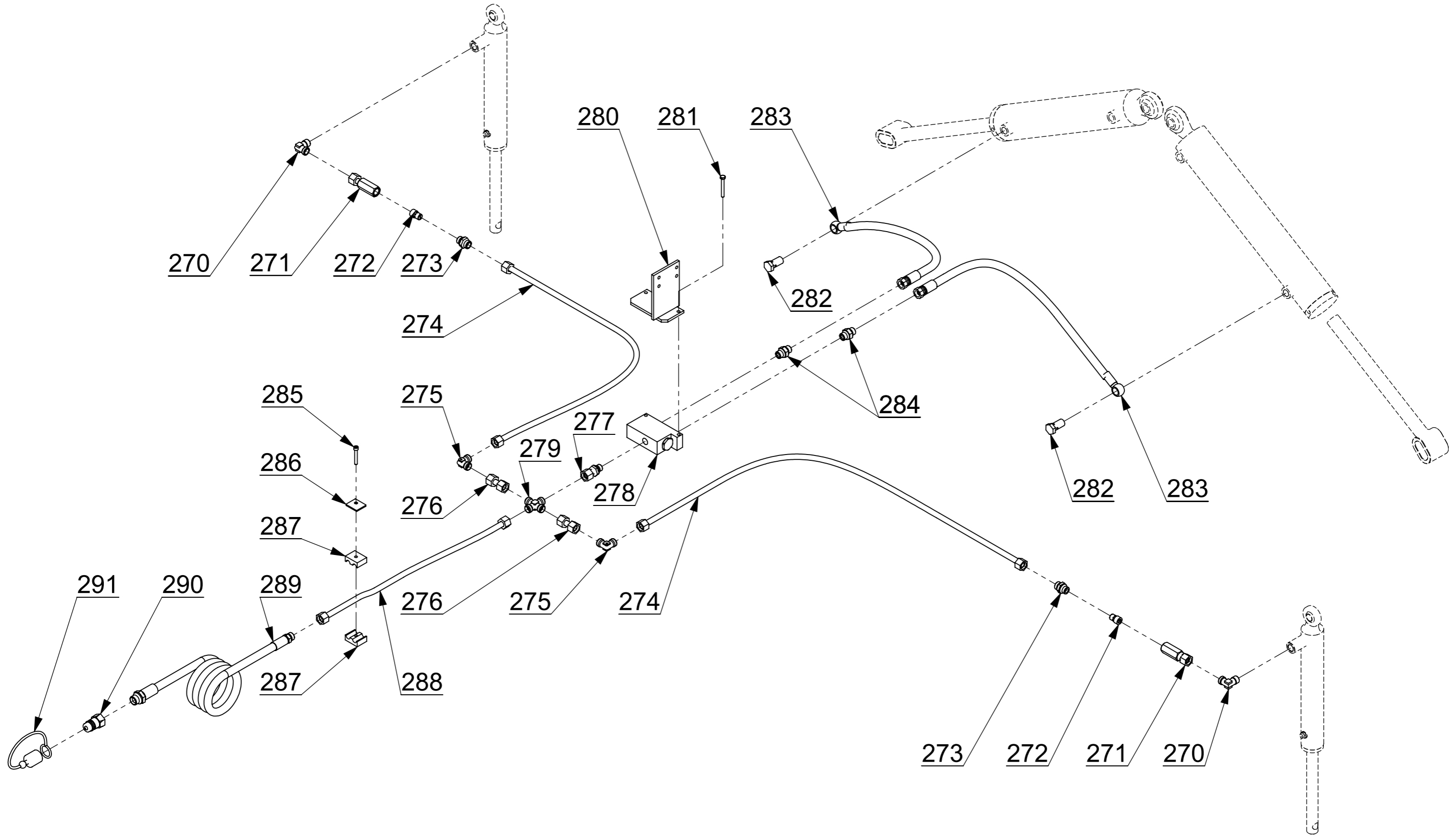


Pos.	Code	Description
210	04.14.3492.18	Pipe fitting DIN TN 92 - 18 LR 3/4"
211	09.00.3611.00	Iron pipe
212	04.08.0442.03	Spin-on filter head
213	04.08.0442.01	Oil cartridge
214	04.13.3412.04	Pipe fitting Male 3/4" - Female 1/2"
215	04.14.0127.15	Pipe fitting DIN TN 127 - 15 LR
216	09.00.3609.00	Iron pipe
217	04.14.0094.15	Pipe fitting DIN TN 94 - 15 LR
218	04.05.0012.04	Max pressure 1/2" valve
219	07.07.0570.02	Hexagonal head screw 5x70 8.8 uni 5739 zinc plated
220	09.00.3614.00	Spacer
221	04.13.0012.01	Nipple 1/2" - 1/2"
222	04.19.2450.00	Rubber pipe
223	04.13.0034.10	Union elbow Male - Female 3/4"
224	04.13.0100.04	Pipe fitting Male 1" - Female 3/4"
225	04.02.0060.00	Cast iron 60 lt. Oleodinamic CCW Pump
226	07.07.1480.02	Hexagonal head screw 14x80 8.8 uni 5737 zinc plated
227	09.00.1720.04	Pump attachment support
228	07.07.1020.05	Hexagonal head screw 10x20 8.8 uni 5739 zinc plated
229	09.00.1720.02	Pump locking pin
230	09.00.1720.01	Pump locking bracket
231	07.02.0014.01	Self-locking nut M 14
232	04.02.0002.90	Fast coupling SER2 for cast iron pump
233	03.08.0010.00	Grower washer ø10 DIN 7980
234	07.01.0010.04	Nut M10 UNI 5588

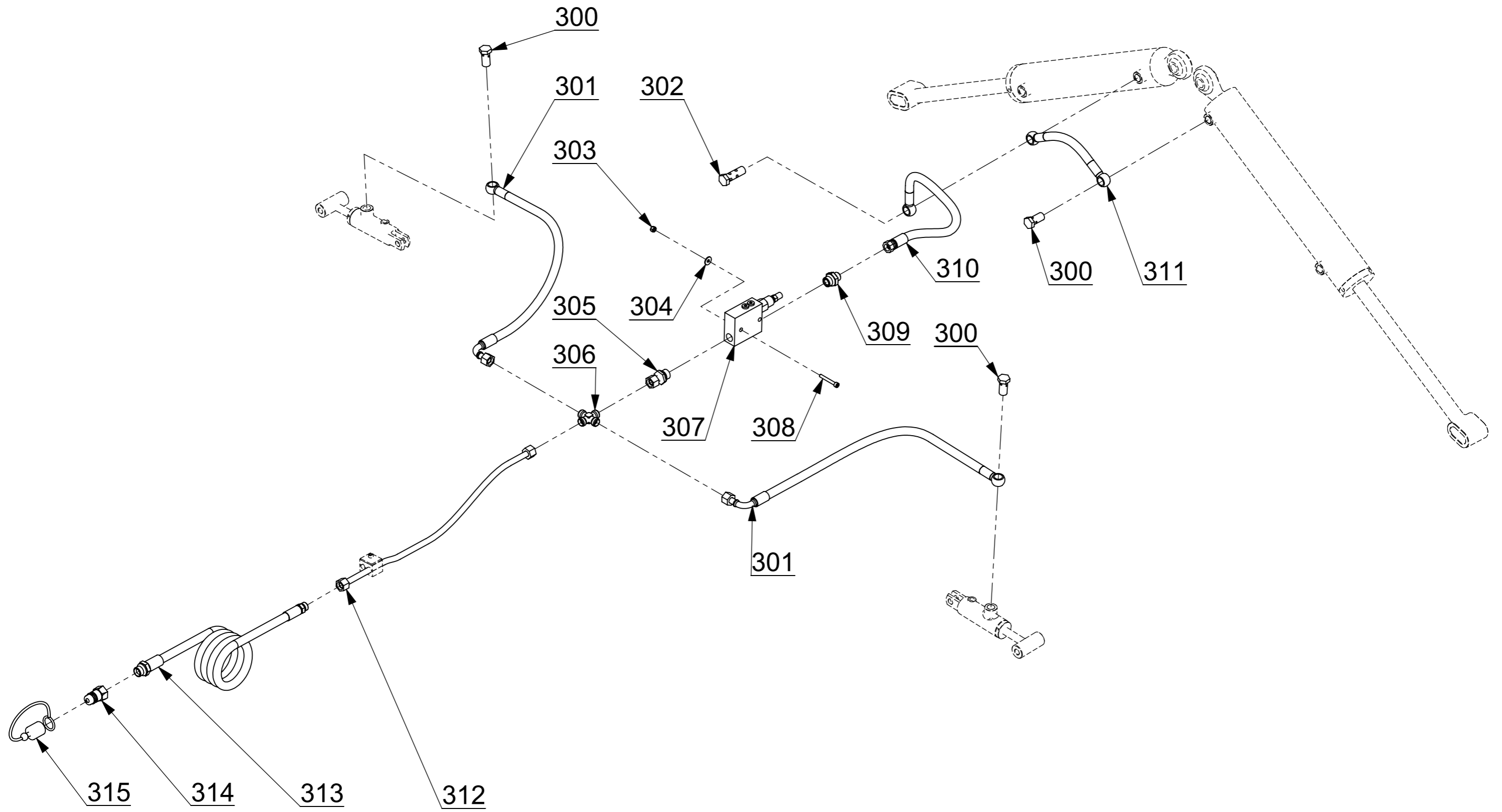
235	04.21.1930.00	Rubber pipe
236	04.07.0022.00	Hold pipe collar C4 22
237	07.03.0635.02	Socket head screw 6x35 UNI 5931 zinc plated
238	09.00.3608.00	Iron pipe
239	04.14.0092.22	Pipe fitting DIN TN 92 - 22 LR
240	04.05.0234.06	Low pressure 3/4" cock
241	09.00.3607.00	Iron pipe
242	04.14.0094.22	Pipe fitting DIN TN 94 - 22 LR



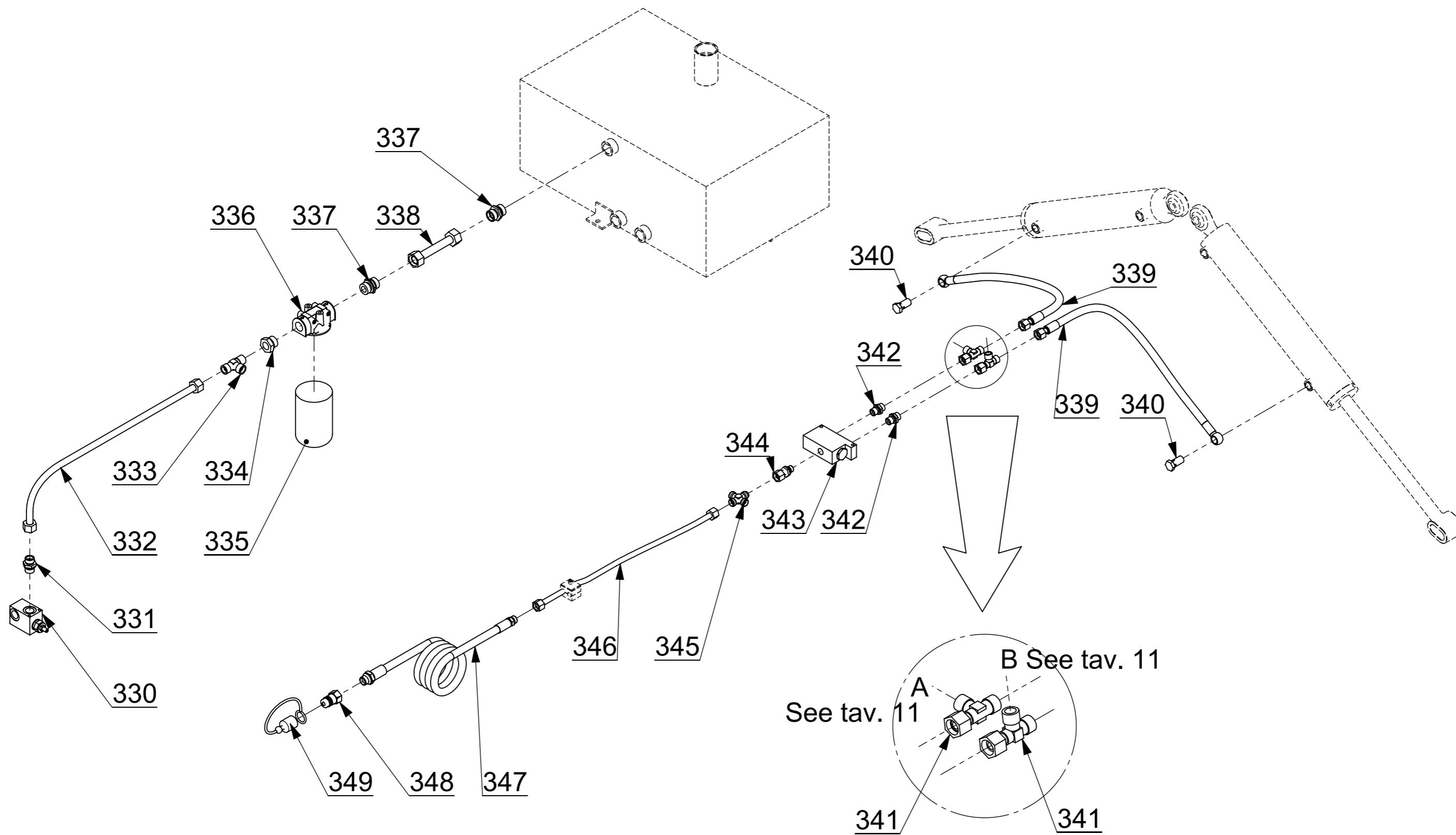
Pos.	Code	Description
250	07.03.0860.02	Socket head screw 8x60 UNI 5931 zinc plated
251	04.07.2020.01	Upper CF3 plate (20-20 and 22-22) zinc plated
252	04.07.2222.00	Hold pipe collar CF3 22-22
253	07.02.0008.01	Self-locking nut M 8
254	04.19.1230.00	Rubber pipe
255	04.19.2500.00	Rubber pipe
256	04.19.1450.00	Rubber pipe
257	04.13.0012.07	Union elbow 1/2"
258	09.00.3610.00	Iron pipe
259	04.14.0092.15	Pipe fitting DIN TN 92 - 15 LR



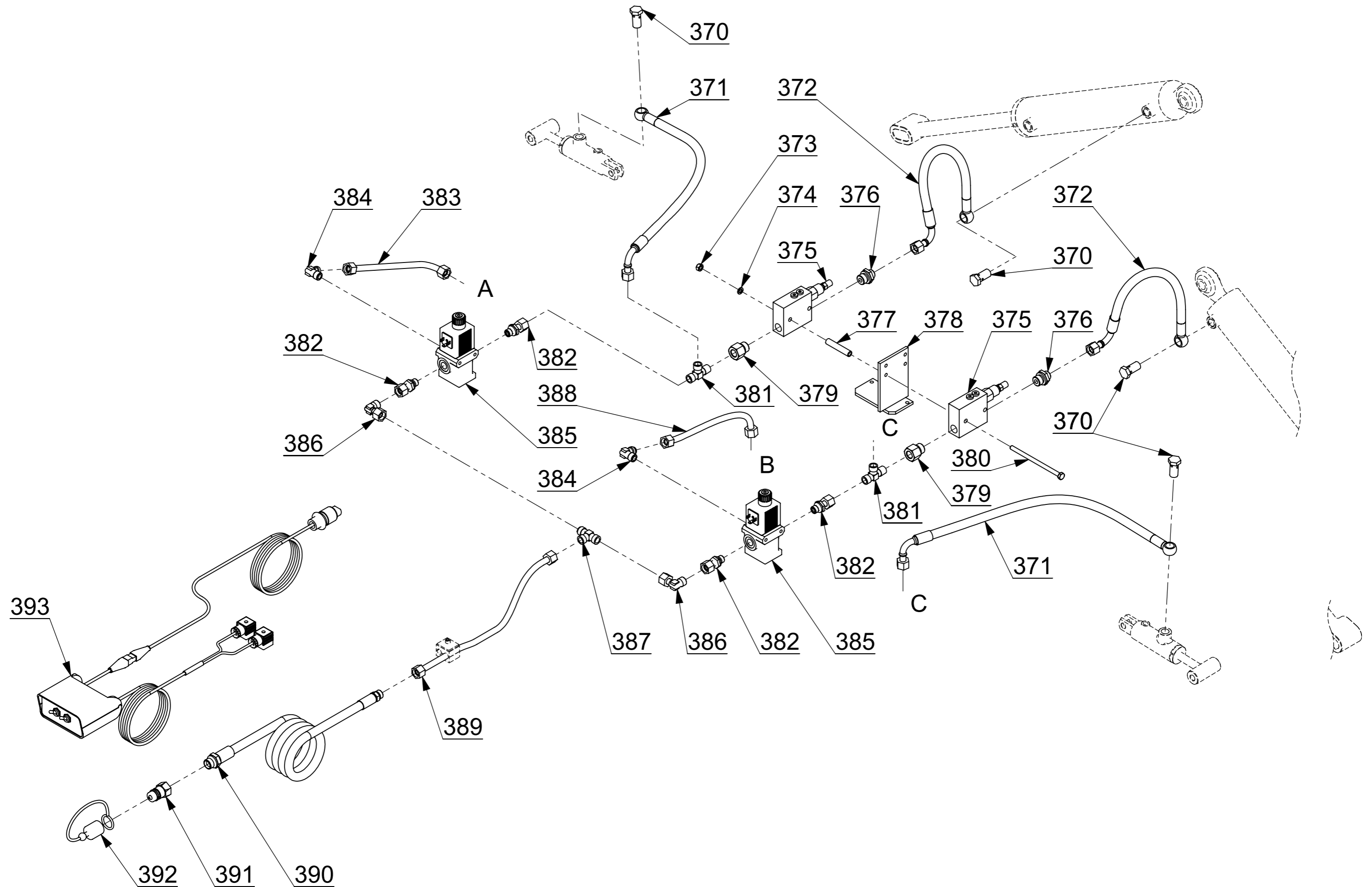
Pos.	Code	Description
270	04.14.0094.12	Pipe fitting DIN TN 94 - 12 LR
271	09.00.3549.11	Pipe fitting for descent control check valve
272	04.05.0038.02	Check valve for descent control
273	04.14.0092.12	Pipe fitting DIN TN 92 - 12 LR
274	09.00.3613.00	Iron pipe
275	04.14.0099.12	Pipe fitting DIN TN 99 - 12 L
276	09.00.1229.01	Iron pipe
277	04.14.0126.12	Pipe fitting DIN TN 126 - 12 LR
278	04.05.3811.01	Flow divisor
279	04.14.0101.12	Pipe fitting DIN TN 101 - 12 L
280	09.00.1952.00	Priority valve support
281	07.07.0550.02	Hexagonal head screw 5x50 8.8 uni 5737 zinc plated
282	04.13.0038.03	Hollow screw 3/8"
283	04.18.0650.03	Rubber pipe
284	04.13.0038.01	Nipple 3/8" - 3/8"
285	07.03.0640.02	Socket head screw 6x40 UNI 5931 zinc plated
286	04.07.1212.01	Upper CF1 plate (12-12) zinc plated
287	04.07.1212.00	Hold pipe collar CF1 12-12
288	09.00.3612.00	Iron pipe
289	04.18.2500.01	Rubber pipe
290	04.15.0012.01	Quick-release coupling male 1/2"
291	04.15.0012.04	Cover for quick-release coupling male 1/2"



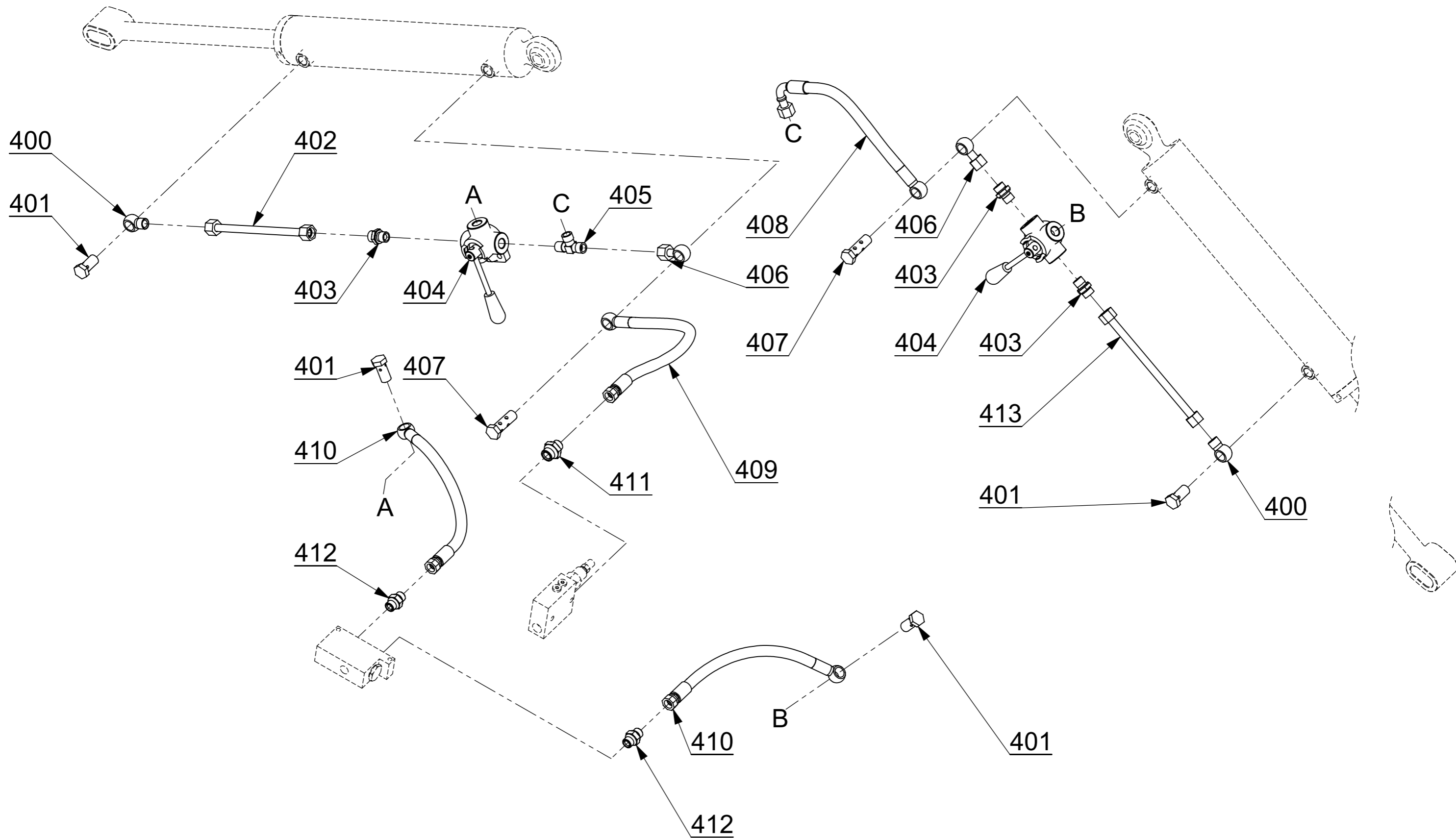
Pos.	Code	Description
300	04.13.0038.03	Hollow screw 3/8"
301	04.18.0670.00	Rubber pipe
302	04.13.1038.03	Double hollow screw 3/8"
303	07.02.0006.01	Self-locking nut M 6
304	03.06.0618.01	Washer ø 6 UNI 6593 (6,2x18x1,6) zinc plated
305	04.14.0126.12	Pipe fitting DIN TN 126 - 12 LR
306	04.14.0101.12	Pipe fitting DIN TN 101 - 12 L
307	04.05.0012.08	Sequence valve
308	07.03.0645.02	Socket head screw 6x45 UNI 5931 zinc plated
309	04.13.1238.02	Nipple 1/2" - 3/8"
310	04.18.0520.00	Rubber pipe
311	04.18.0310.00	Rubber pipe
312	09.00.3626.00	Iron pipe
313	04.18.2500.01	Rubber pipe
314	04.15.0012.01	Quick-release coupling male 1/2"
315	04.15.0012.04	Cover for quick-release coupling male 1/2"



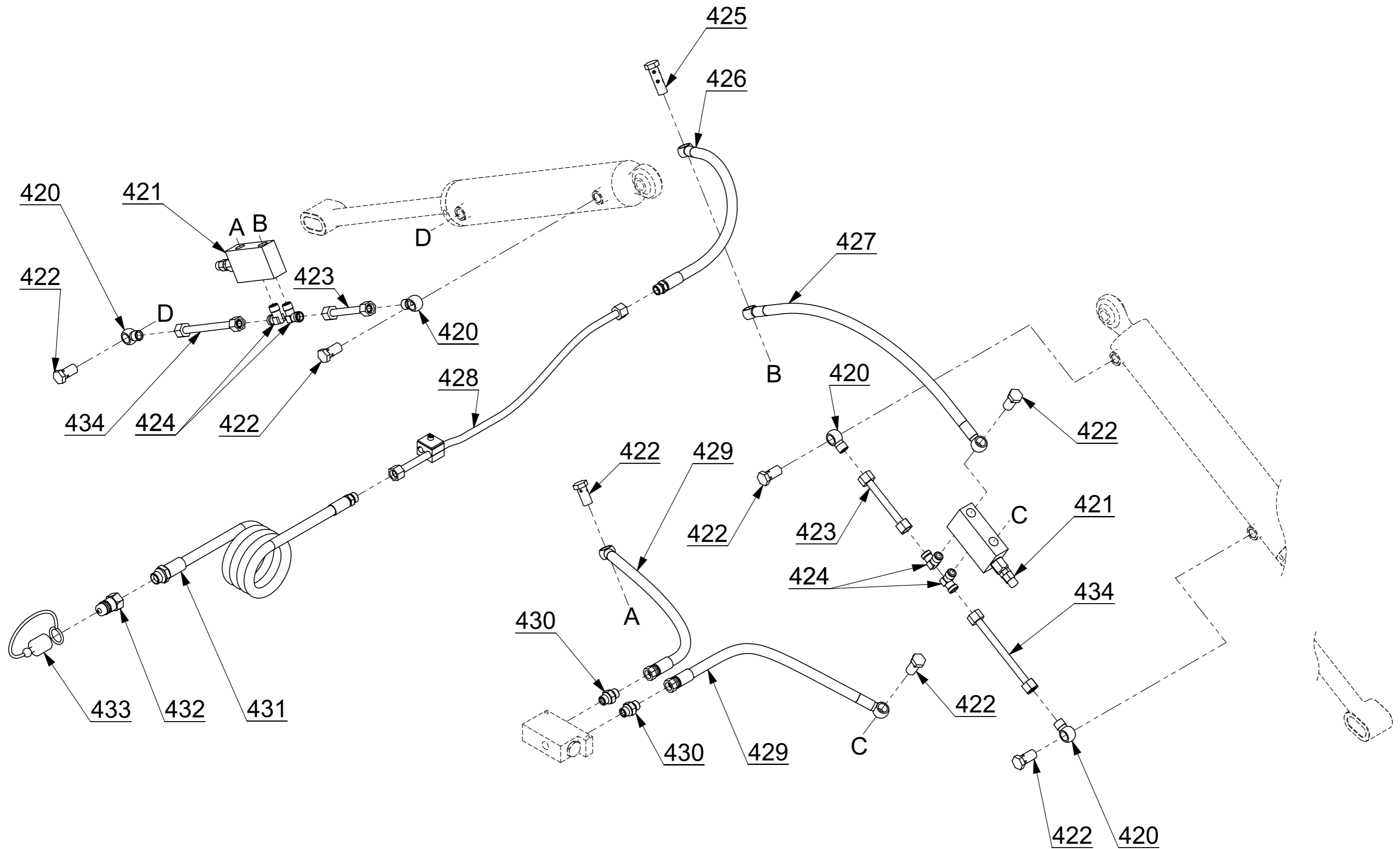
Pos.	Code	Description
330	04.05.0012.04	Max pressure 1/2" valve
331	04.14.0092.15	Pipe fitting DIN TN 92 - 15 LR
332	09.00.3609.01	Iron pipe
333	04.14.0127.15	Pipe fitting DIN TN 127 - 15 LR
334	04.13.3412.04	Pipe fitting Male 3/4" - Female 1/2"
335	04.08.0442.01	Oil cartridge
336	04.08.0442.03	Spin-on filter head
337	04.14.3492.18	Pipe fitting DIN TN 92 - 18 LR 3/4"
338	09.00.3611.00	Iron pipe
339	04.18.0650.05	Rubber pipe
340	04.13.0038.03	Hollow screw 3/8"
341	04.14.0121.12	Pipe fitting DIN TN 121 - 12 L (body)
342	04.14.0092.12	Pipe fitting DIN TN 92 - 12 LR
343	04.05.3811.01	Flow divisor
344	04.14.0126.12	Pipe fitting DIN TN 126 - 12 LR
345	04.14.0101.12	Pipe fitting DIN TN 101 - 12 L
346	09.00.3626.00	Iron pipe
347	04.18.2500.01	Rubber pipe
348	04.15.0012.01	Quick-release coupling male 1/2"
349	04.15.0012.04	Cover for quick-release coupling male 1/2"



Pos.	Code	Description
370	04.13.0038.03	Hollow screw 3/8"
371	04.18.0670.00	Rubber pipe
372	04.18.0600.00	Rubber pipe
373	07.02.0006.01	Self-locking nut M 6
374	03.06.0618.01	Washer ø 6 UNI 6593 (6,2x18x1,6) zinc plated
375	04.05.0012.08	Sequence valve
376	04.14.1292.12	Pipe fitting DIN TN 92 - 12 LR 1/2"
377	09.00.3628.00	Iron spacer
378	09.00.1952.00	Priority valve support
379	04.13.1238.04	Pipe fitting Male 1/2" - Female 3/8"
380	07.07.8140.02	Hexagonal head screw 8x140 8.8 uni 5737 zinc plated
381	04.14.0127.12	Pipe fitting DIN TN 127 - 12 LR
382	04.14.0126.12	Pipe fitting DIN TN 126 - 12 LR
383	09.00.3629.00	Iron pipe
384	04.14.0094.12	Pipe fitting DIN TN 94 - 12 LR
385	04.05.0312.07	Solenoid 3 way valve (12 V DC)
386	04.14.0119.12	Pipe fitting DIN TN 119 - 12 L (body)
387	04.14.0100.12	Pipe fitting DIN TN 100 - 12 L
388	09.00.3630.00	By-pass iron pipe
389	09.00.3631.00	Iron pipe
390	04.18.2500.01	Rubber pipe
391	04.15.0012.01	Quick-release coupling male 1/2"
392	04.15.0012.04	Cover for quick-release coupling male 1/2"
393	01.13.0008.00	Pushbutton panel for solenoid valve control (wired)

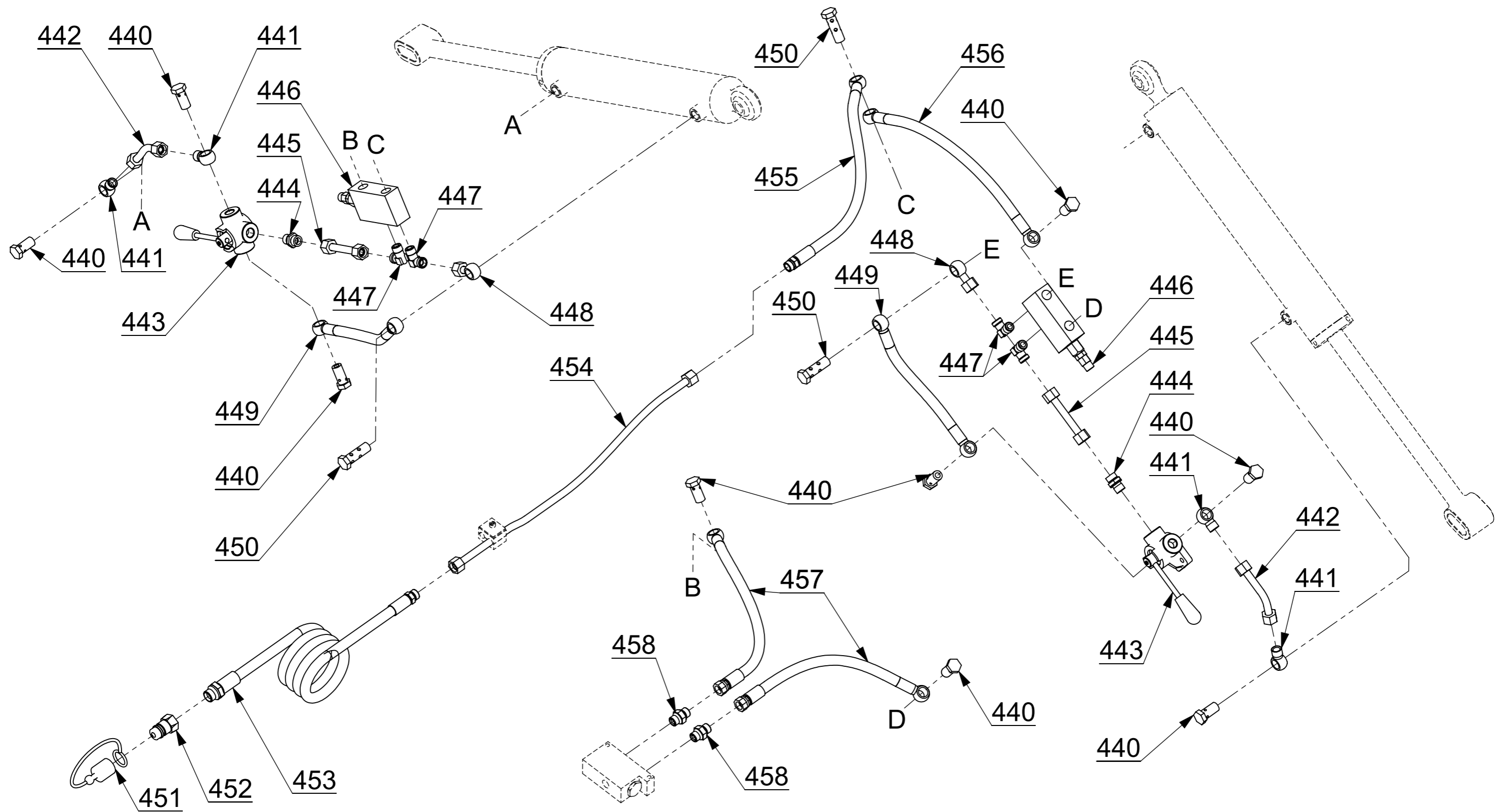


Pos.	Code	Description
400	04.14.0038.12	Pipe fitting 12 - Eye 3/8" L
401	04.13.0038.03	Hollow screw 3/8"
402	09.00.1937.01	Iron pipe
403	04.14.0092.12	Pipe fitting DIN TN 92 - 12 LR
404	04.05.0338.06	Three-way 3/8" cock
405	04.14.0127.12	Pipe fitting DIN TN 127 - 12 LR
406	04.14.1238.00	Pipe fitting eye 3/8"
407	04.13.1038.03	Double hollow screw 3/8"
408	04.18.0400.03	Rubber pipe
409	04.18.0520.00	Rubber pipe
410	04.18.0520.00	Rubber pipe
411	04.13.1238.02	Nipple 1/2" - 3/8"
412	04.13.0038.01	Nipple 3/8" - 3/8"
413	09.00.1936.01	Iron pipe

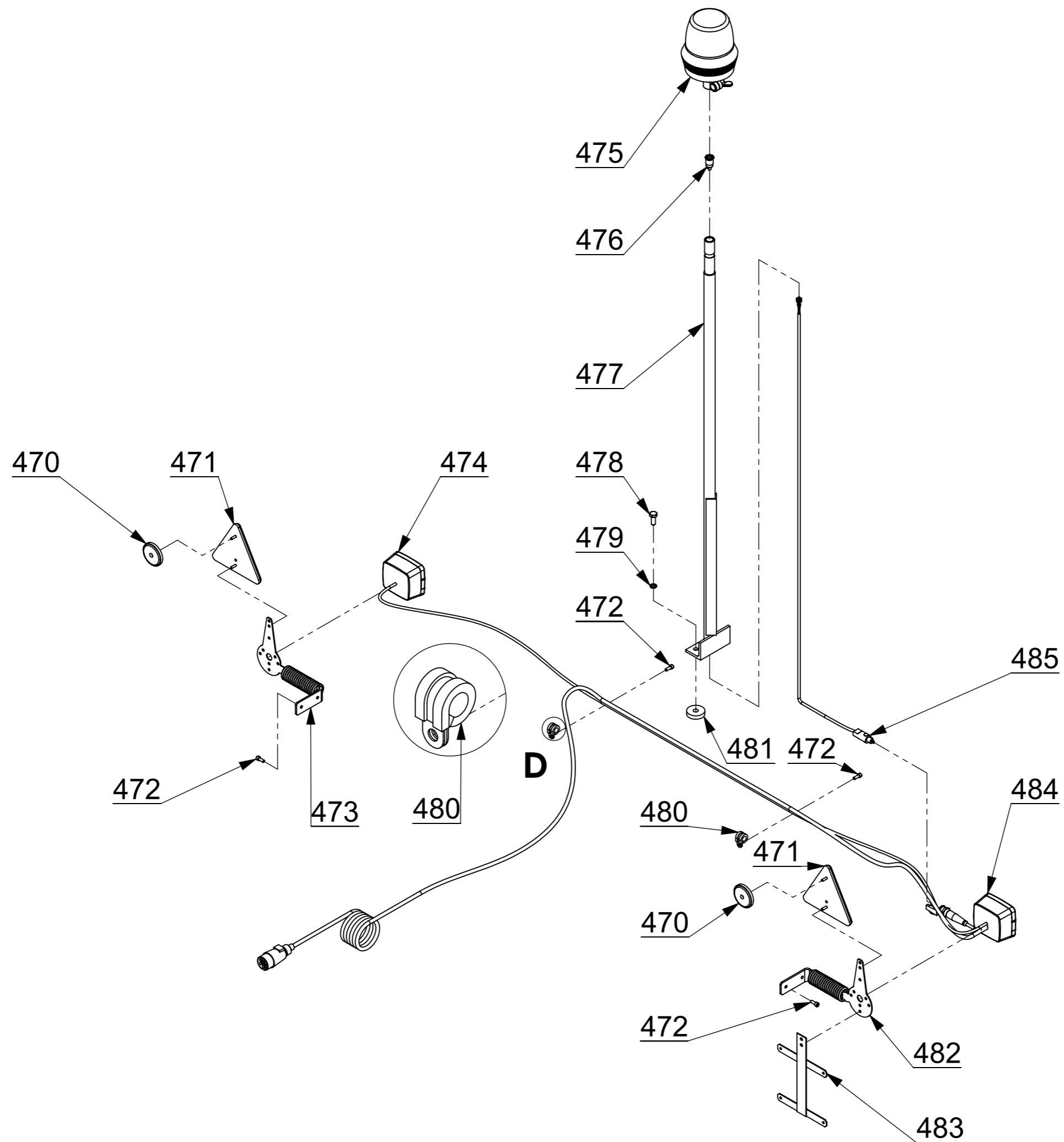


Pos.	Code	Description
420	04.14.0038.12	Pipe fitting 12 - Eye 3/8" L
421	04.05.3801.03	Single overcentre valve
422	04.13.0038.03	Hollow screw 3/8"
423	09.00.1272.00	Iron pipe
424	04.14.0094.12	Pipe fitting DIN TN 94 - 12 LR
425	04.13.1038.03	Double hollow screw 3/8"
426	04.18.0850.00	Rubber pipe
427	04.18.0450.01	Rubber pipe
428	09.00.3626.00	Iron pipe
429	04.18.0360.00	Rubber pipe
430	04.13.0038.01	Nipple 3/8" - 3/8"
431	04.18.2500.01	Rubber pipe
432	04.15.0012.01	Quick-release coupling male 1/2"
433	04.15.0012.04	Cover for quick-release coupling male 1/2"
434	09.00.1936.00	Iron pipe

Hydraulic unit with locking valves and taps on the cylinders



Pos.	Code	Description
440	04.13.0038.03	Hollow screw 3/8"
441	04.14.0038.12	Pipe fitting 12 - Eye 3/8" L
442	09.00.3633.00	Iron pipe
443	04.05.0338.06	Three-way 3/8" cock
444	04.14.0092.12	Pipe fitting DIN TN 92 - 12 LR
445	09.00.3632.00	Iron pipe
446	04.05.3801.03	Single overcentre valve
447	04.14.0094.12	Pipe fitting DIN TN 94 - 12 LR
448	04.14.1238.00	Pipe fitting eye 3/8"
449	04.18.0280.01	Rubber pipe
450	04.13.1038.03	Double hollow screw 3/8"
451	04.15.0012.04	Cover for quick-release coupling male 1/2"
452	04.15.0012.01	Quick-release coupling male 1/2"
453	04.18.2500.01	Rubber pipe
454	09.00.3626.00	Iron pipe
455	04.18.0850.00	Rubber pipe
456	04.18.0450.01	Rubber pipe
457	04.18.0360.00	Rubber pipe
458	04.13.0038.01	Nipple 3/8" - 3/8"



Pos.	Code	Description
470	01.03.1002.02	White round reflector
471	01.03.1002.01	Red triangular reflector
472	07.03.0616.02	Socket head screw 6x16 UNI 5931 zinc plated
473	01.03.1003.01	Right head light bracket mod. 6000C
474	01.03.1004.02	Rear right side light
474,1	01.03.1000.01	Bulb BA 15S 12-21 (rear and rear stop)
474,2	01.03.1000.02	Bulb SV 8,5 12-05 (number plate)
474,3	01.03.1001.02	Taillight glass
474,4	01.03.1001.01	Plate light glass
475	01.03.1255.00	Pivottable orange headlight
476	01.03.1255.01	Pivottable headlight column
477	09.00.3617.00	Pivottable headlight coupling
478	07.07.1025.05	Hexagonal head screw 10x25 8.8 uni 5739 zinc plated
479	03.08.0010.01	Grower washer ø10 DIN 7980 zinc plated
480	03.14.0012.00	Hose clamps with rubber
482	01.03.1003.02	Left head light bracket mod. 6000C
483	01.03.1003.07	Number plate holder
484	01.03.1004.01	Rear left side light with plate
484,1	01.03.1000.01	Bulb BA 15S 12-21 (rear and rear stop)
484,2	01.03.1000.02	Bulb SV 8,5 12-05 (number plate)
484,3	01.03.1001.02	Taillight glass
484,4	01.03.1001.01	Plate light glass
485	01.03.6000.04	Cable with plug for pivottable headlight connection