

Repossi
macchine agricole

SPARE PARTS CATALOGUE

COMB RAKE

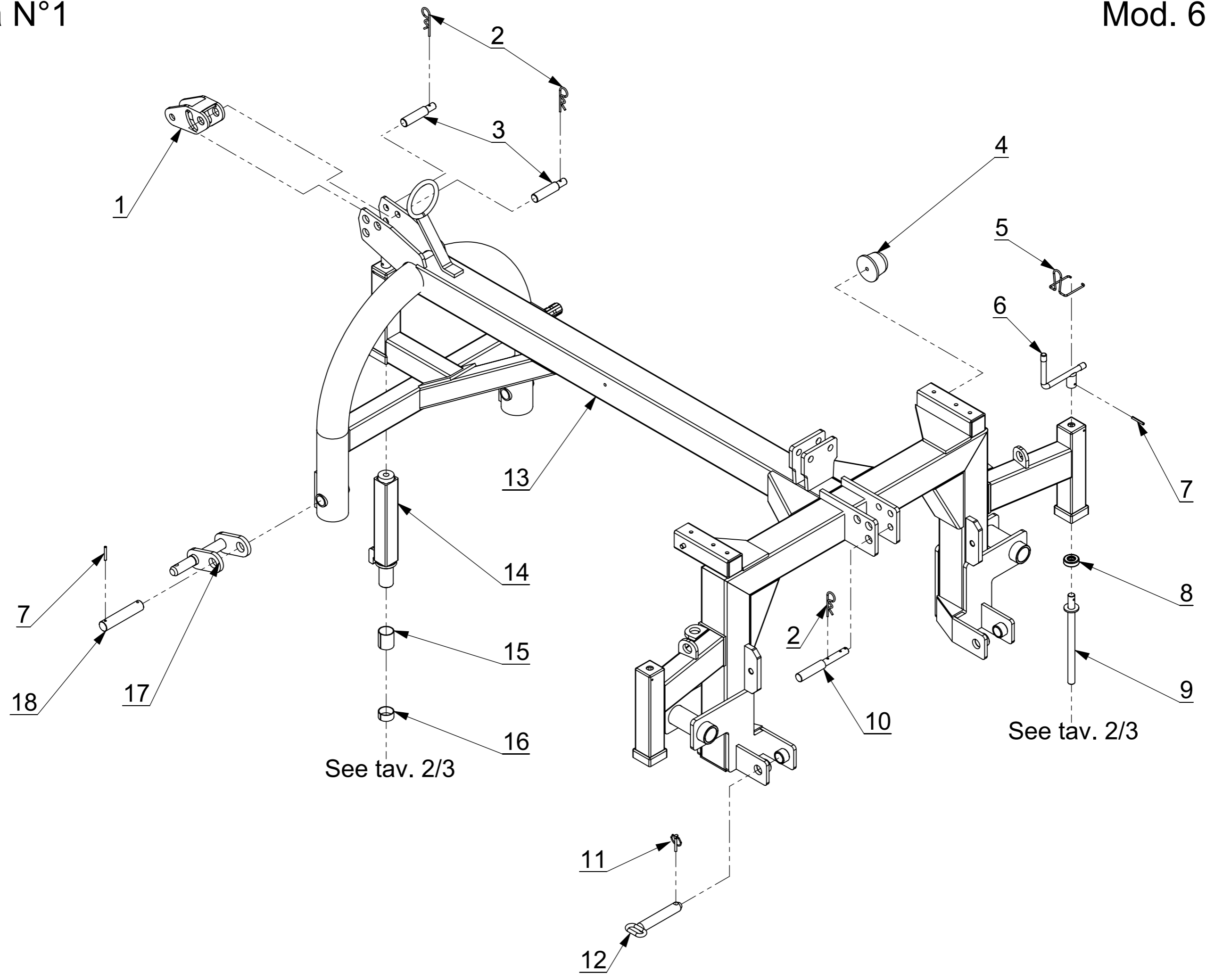
mod. **6000FP**

Repossi Macchine agricole s.r.l.

Via V. Emanuele II, 40 - 27022 Casorate Primo (PV) - Italia

Tel. **39 02 905 66 25 - Fax **39 02 905 13 08

e-mail: info@repossi.it - Web: www.repossi.it

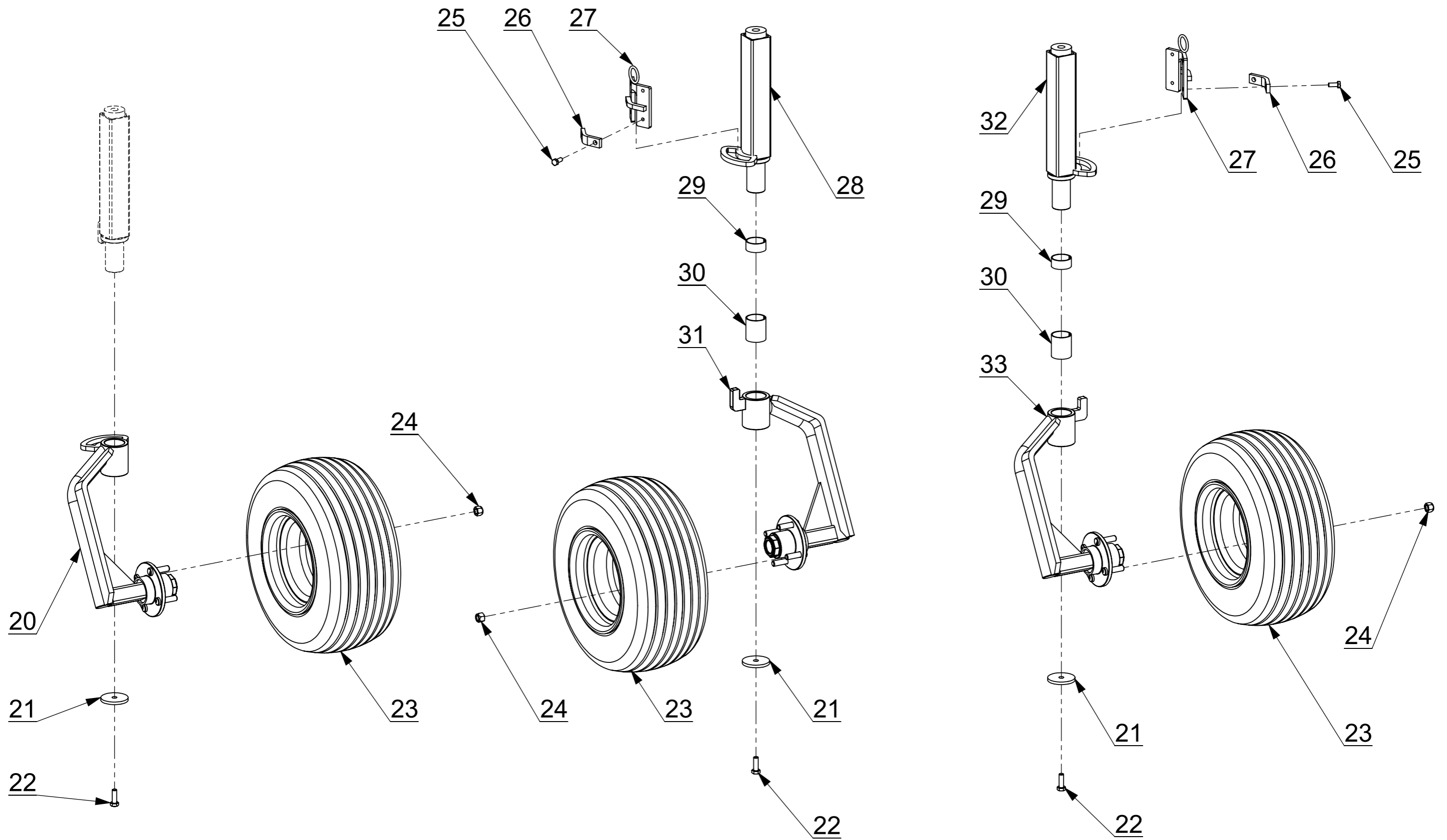


Pos.	Code	Description
1	09.00.1351.00	Third point articulation
2	03.05.0004.00	B cotter ø4
3	09.00.1352.00	3° point pin
4	03.10.8060.12	M12 bumper
5	01.15.1149.02	Locking handle spring
6	01.15.1149.01	Height adjustment handle
7	03.11.0645.01	Elastic pin 6x45 zinc plated
8	01.15.1149.04	Thrust bearing for foot
9	01.15.1149.03	Screw for the height adjustment of the swivel wheel
10	09.00.1434.00	Three point pin
11	03.04.0010.00	Plug snap ø 10
12	09.00.1901.00	Lifter pin
13,1	09.00.1900.00	Main frame
13,2	09.00.1970.00	Special larger main frame
14	09.04.1149.00	Internal foot with limited rotation and ø35 pin
15	03.15.4050.00	Sintered bush 40x44x50
16	03.15.4020.00	Sintered bush 40x44x20
17	09.00.1503.00	Power lift attachment
18	09.00.1502.00	Power lift pin

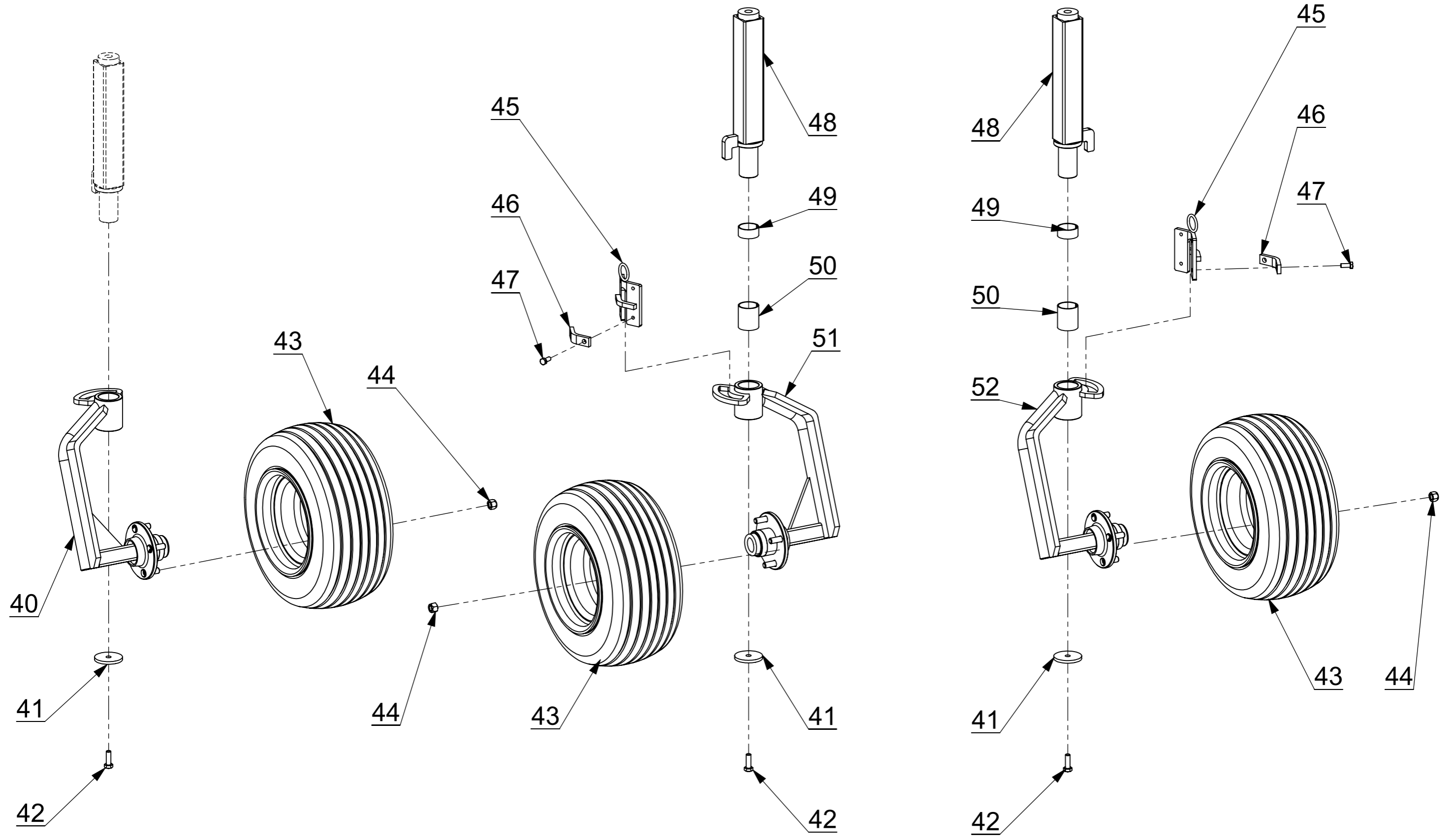
Tavola N°2

18.5 x 8.5 - 8 Wheels version

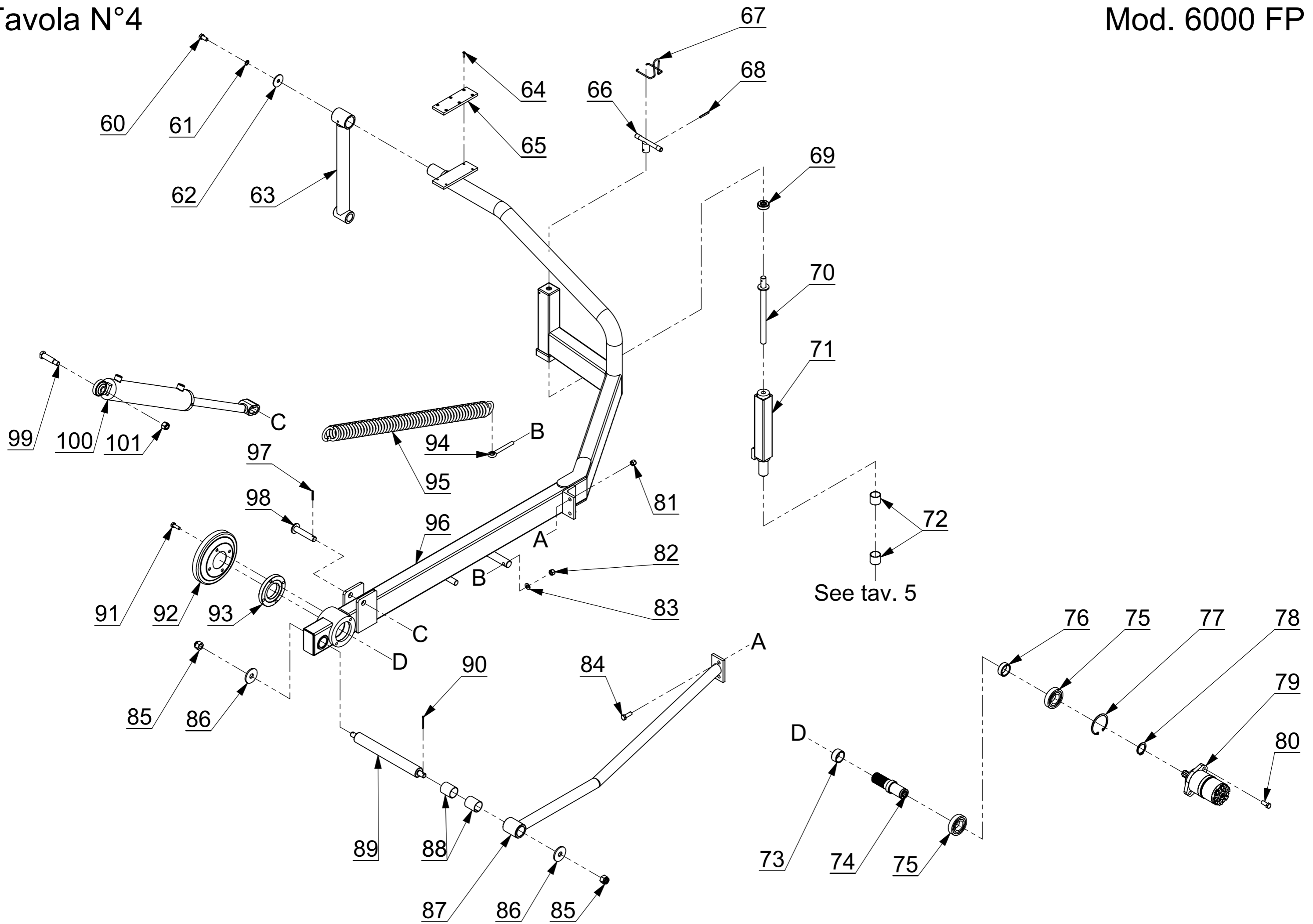
Mod. 6000 FP



Pos.	Code	Description
20	09.00.2402.06	Front swiveling wheel fork with limited rotation (18,5x8.5-8 wheel)
21	03.07.1160.00	Washer 11x60x6
22	07.07.1030.04	Hexagonal head screw 10x30 8.8 uni 5739
23	01.06.1808.40	Complete wheel 18,5x8.50-8 with 4 holes FIAT rim
23,1	01.06.1808.01	Tire 18,5x8.50-8
23,2	01.06.1808.02	Inner tube for wheel 18.5x6.50-8
23,3	01.06.1808.03	4 hole rim for wheel 18,5x8.50-8
24	01.08.1215.00	Special nut M12
25	07.07.0820.05	Hexagonal head screw 8x20 8.8 uni 5739 zinc plated
26	09.00.1910.00	Wheel locks fixing plate
27	09.00.1909.00	Swivel wheels locking
28	09.04.1149.06	Internal left foot with limited rotation and ø40 pin
29	03.15.4020.00	Sintered bush 40x44x20
30	03.15.4050.00	Sintered bush 40x44x50
31	09.00.2402.08	Rear left swiveling wheel fork with limited rotation (18,5x8.5-8 wheel)
32	09.04.1149.05	Internal right foot with limited rotation and ø40 pin
33	09.00.2402.07	Rear right swiveling wheel fork with limited rotation (18,5x8.5-8 wheel)

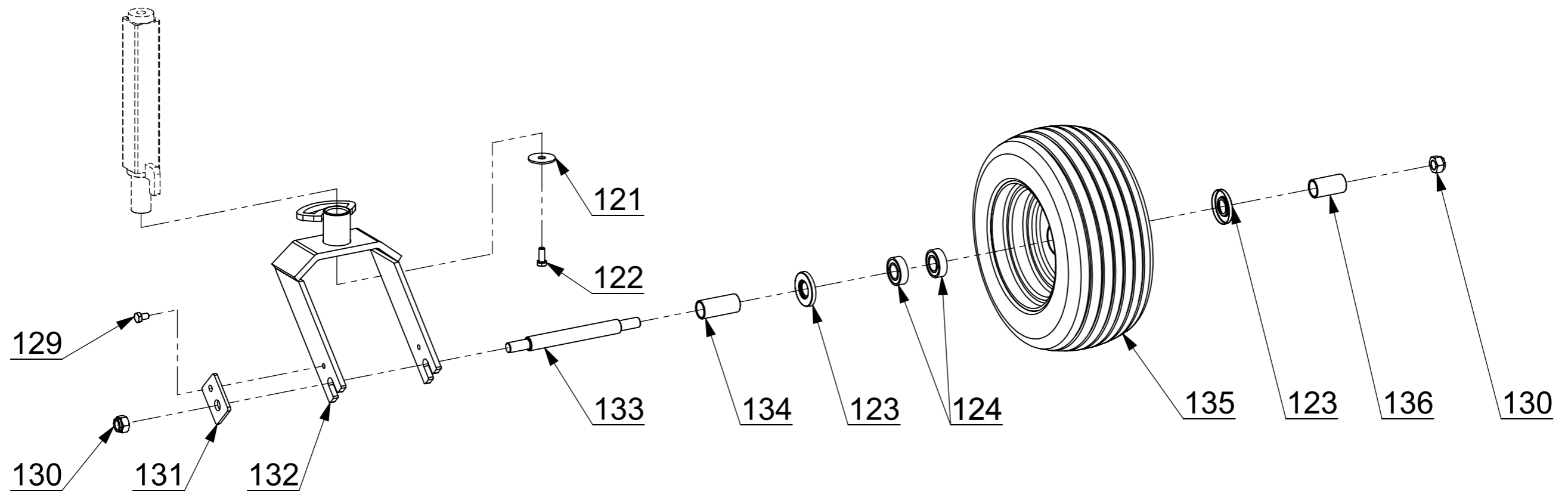
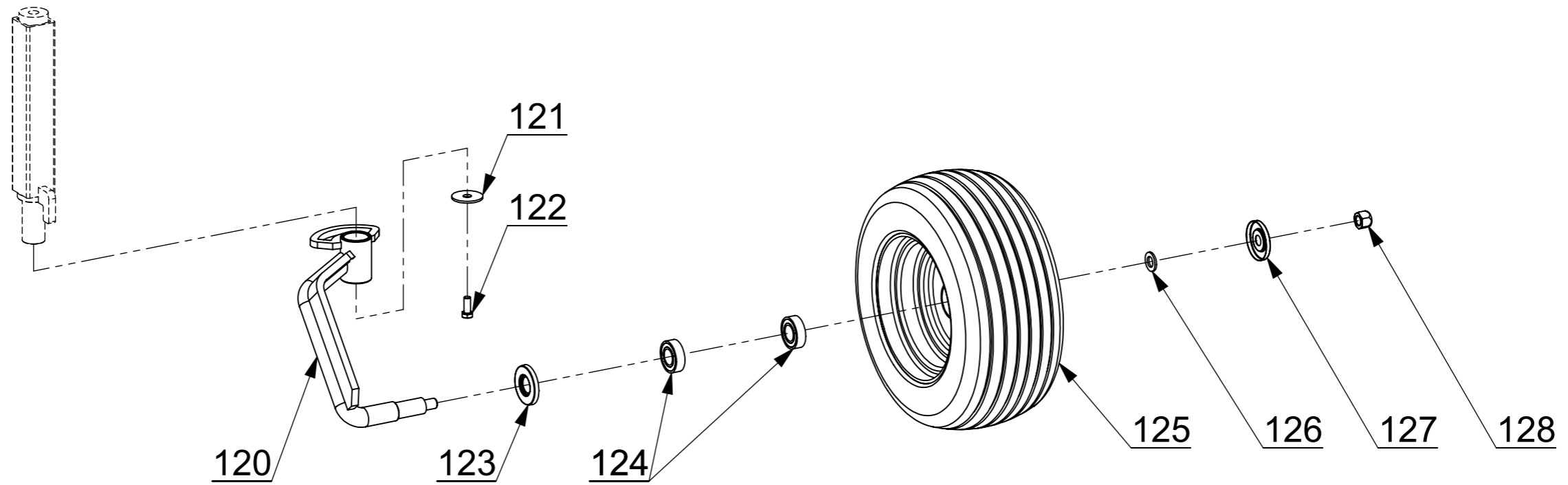


Pos.	Code	Description
40	09.00.2402.01	Front swiveling wheel fork with limited rotation (16x6.5-8 wheel)
41	03.07.1160.00	Washer 11x60x6
42	07.07.1030.04	Hexagonal head screw 10x30 8.8 uni 5739
43	01.06.1608.04	Complete wheel 16x6.50-8 with 4 holes FIAT rim
43,1	01.06.1608.01	Tire 16x6.50-8
43,2	01.06.1608.02	Inner tube for wheel 16x6.50-8
43,3	01.06.1608.03	4 hole rim for wheel 16x6.50-8
44	01.08.1215.00	Special nut M12
45	09.00.1909.00	Swivel wheels locking
46	09.00.1910.00	Wheel locks fixing plate
47	07.07.0820.05	Hexagonal head screw 8x20 8.8 uni 5739 zinc plated
48	09.04.1149.01	Internal foot with limited rotation and increased pin
49	03.15.4020.00	Sintered bush 40x44x20
50	03.15.4050.00	Sintered bush 40x44x50
51	09.00.2402.03	Rear left swiveling wheel fork with limited rotation (16x6.5-8 wheel)
52	09.00.2402.02	Rear right swiveling wheel fork with limited rotation (16x6.5-8 wheel)

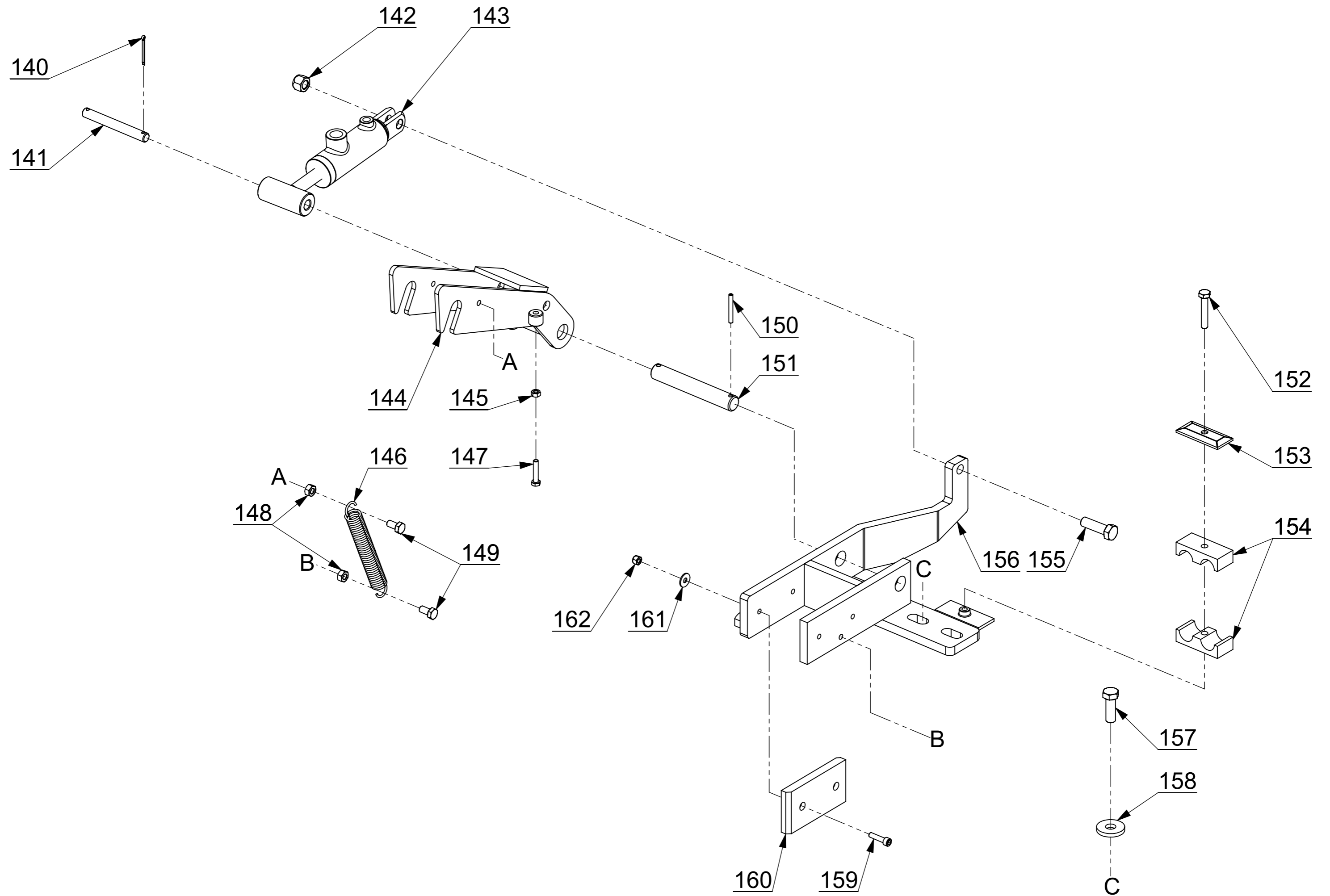


Pos.	Code	Description
60	07.07.1225.04	Hexagonal head screw 12x25 8.8 uni 5739
61	03.08.0012.03	Lock washer ø12 DIN 6798j zinc plated
62	03.07.1350.00	Washer 13x50x3
63	09.00.0099.00	Straigth arm
64	07.09.0520.00	Flathead screw 5x20 UNI 7688 zinc plated
65	01.99.3627.00	Rubber buffer
66	01.15.1149.01	Height adjustment handle
67	01.15.1149.02	Locking handle spring
68	03.11.0645.00	Elastic pin 6x45
69	01.15.1149.04	Thrust bearing for foot
70	01.15.1149.03	Screw for the height adjustment of the swivel wheel
71	09.04.1149.00	Internal foot with limited rotation and ø35 pin
72	03.15.3535.00	Sintered bush 35x39x35
73	09.00.0482.00	External spacer 50x40x25
74	09.00.0481.01	Crosswise center shaft for hydraulic motor
75	03.03.6208.00	Bearing 6208 - 40x80x18
76	09.00.0484.09	Internal spacer 50x40x18
77	03.09.0080.01	Snap ring 80i
78	03.09.0040.00	Snap ring 40e
79	04.01.0315.00	Hydraulic motor 315cc
79,1	04.01.0001.90	Hydraulic motor gasket kit (epm - omp)
80	07.07.1230.04	Hexagonal head screw 12x30 8.8 uni 5739
81	07.02.0012.01	Self-locking nut M 12
82	07.01.0012.05	Nut M12 UNI 5588 zincplated
83	03.06.1324.01	Washer ø12 UNI 6592 (13x24x2.5)

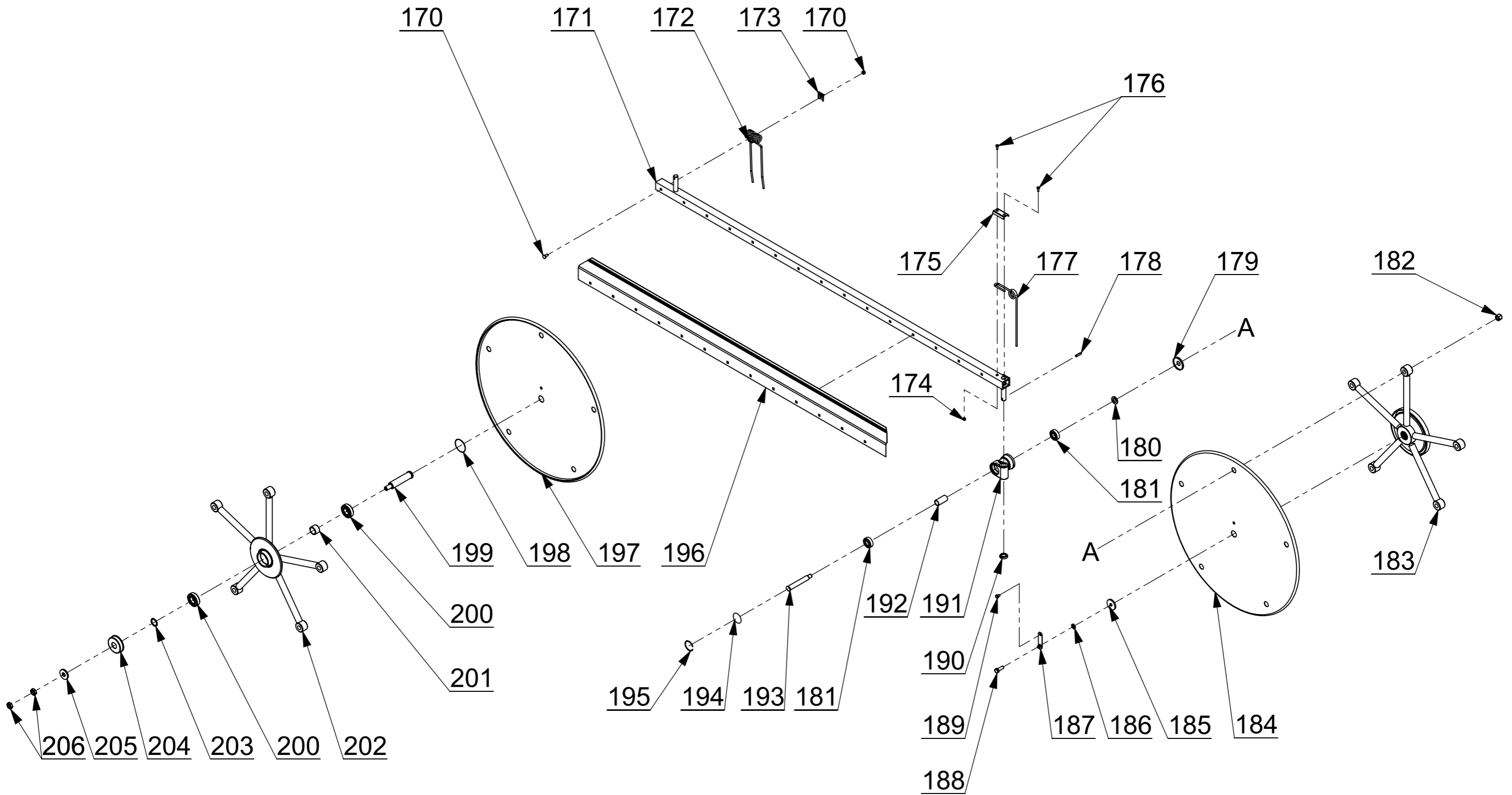
84	07.07.1235.04	Hexagonal head screw 12x35 8.8 uni 5739
85	07.01.0018.07	Castle nut M18 UNI 5594
86	03.07.1960.00	Washer 19x60x5
87	09.00.1903.00	Rear reinforcement
88	03.15.4050.00	Sintered bush 40x44x50
89	09.00.1902.03	Rake hinged joint pin
90	03.02.4060.01	Split pin 4x60 UNI1336 zinc plated
91	07.07.1030.04	Hexagonal head screw 10x30 8.8 uni 5739
92	06.03.0052.04	Crosswise protection cap with 4 holes
93	02.01.1056.00	Aluminum flange
94	01.16.0010.05	Eye tie rod M10
95	03.05.1908.00	Raking group spring
96,1	09.00.1902.00	Right standard raking group frame (13 theeth)
96,2	09.00.1902.10	Left standard raking group frame (13 theeth)
96,3	09.00.1902.06	Right BIG raking group frame (15 theeth) wheel 16x6.5-8
96,4	09.00.1902.02	Right BIG raking group frame (15 theeth) wheel 18,5x8.5-8
96,5	09.00.1902.60	Left BIG raking group frame (15 theeth) wheel 16x6.5-8
96,6	09.00.1902.20	Left BIG raking group frame (15 theeth) wheel 18,5x8.5-8
97	03.11.0540.00	Elastic pin 5x40
98	09.00.1165.00	Cylinder and drawbar pin
99	09.00.1130.00	Cylinder pin
100	04.09.0017.02	Hydraulic cylinder for raking group
100,1	04.09.0003.90	Cylinder gasket kit
101	07.02.0016.01	Self-locking nut M 16



Pos.	Code	Description
120	09.00.3004.00	Swivel wheels fork with limited rotation
121	03.07.1348.00	Washer 13x48x3
122	07.07.1025.04	Hexagonal head screw 10x25 8.8 uni 5739
123	01.06.0025.00	Internal cap
124	03.03.6205.02	Bearing 6205 2RS - 25x52x15
125	01.06.1506.00	Complete wheel 15x6.00-6
125,1	01.06.1506.01	Tire 15x6.00-6
125,2	01.06.1506.02	Inner tube for wheel 15x6.00-6
125,3	01.06.1608.00	Complete wheel 16x6.50-8
125,4	01.06.1608.01	Tire 16x6.50-8
125,5	01.06.1608.02	Inner tube for wheel 16x6.50-8
126	03.06.1730.00	Washer 17x30x3
127	01.06.0016.00	External cap
128	07.02.0018.01	Self-locking nut M 18
129	07.07.1016.04	Hexagonal head screw 10x16 8.8 uni 5739
130	07.02.0018.01	Self-locking nut M 18
131	09.00.1957.00	Fork pin fixing plate for 16x6.50-8 wheel
132	09.00.3566.00	Wheel fork for 16x6.50-8 wheel with bushing \varnothing 35
133	09.00.1954.00	Fork wheel pin for 16x6.50-8 wheel
134	09.00.1956.00	Short spacer for wheel 16x6.50-8 fork
135	01.06.1608.00	Complete wheel 16x6.50-8
135,1	01.06.1608.01	Tire 16x6.50-8
135,2	01.06.1608.02	Inner tube for wheel 16x6.50-8
136	09.00.1955.00	Long spacer for wheel 16x6.50-8 fork

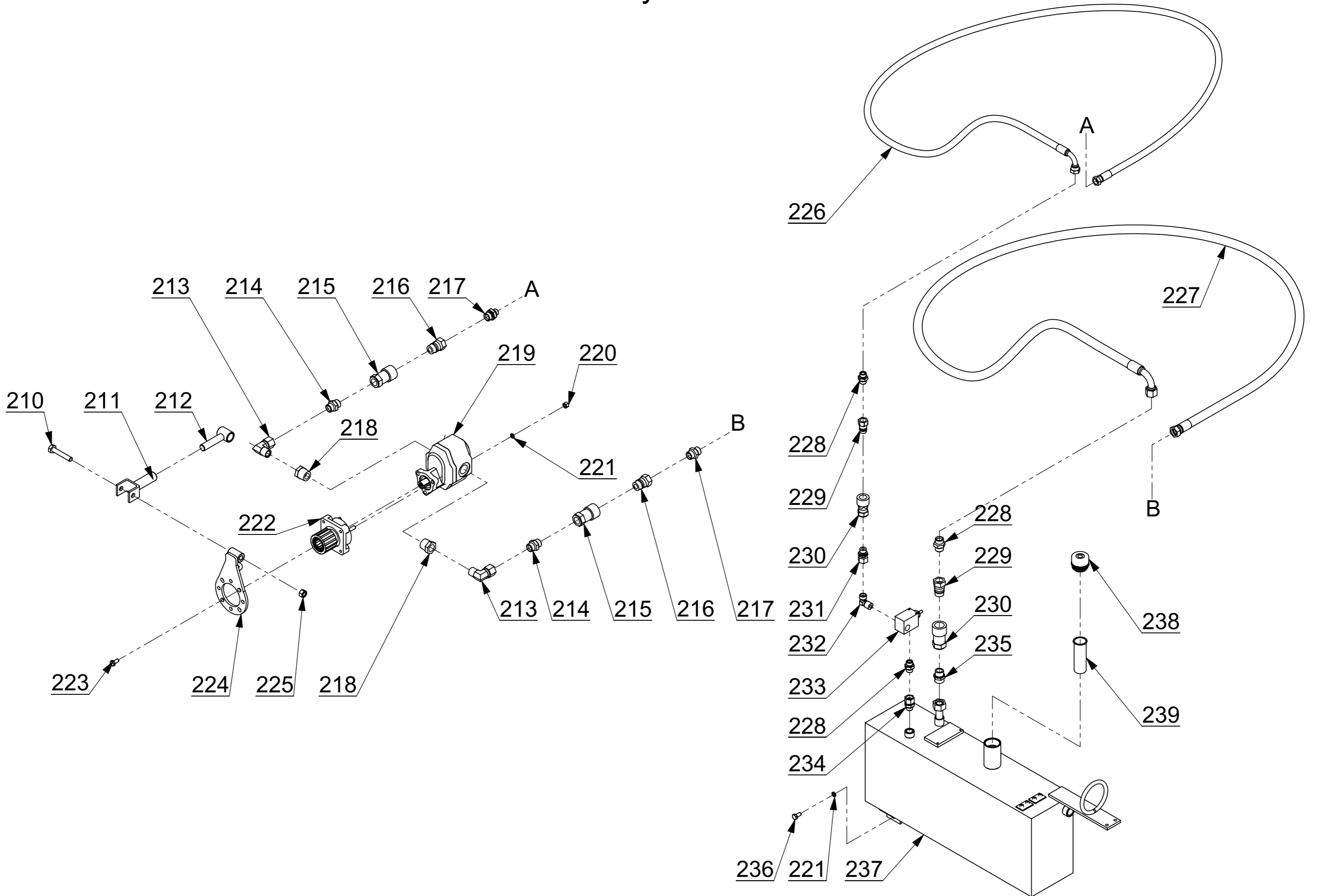


Pos.	Code	Description
140	03.02.3030.01	Split pin 3x30 UNI1336 zinc plated
141	09.00.3559.00	Connecting pin
142	07.02.0012.01	Self-locking nut M 12
143	04.09.0026.01	Hydraulic cylinder for safety hook
143,1	04.09.0026.90	Cylinder gasket kit
144	09.00.3551.00	Safety hook
145	07.01.0006.05	Nut M6 UNI 5588 zinc plated
146	03.05.0347.00	Return spring
147	07.07.0620.05	Hexagonal head screw 6x20 uni 5739 zinc plated
148	07.01.0008.05	Nut M8 UNI 5588 zinc plated
149	07.07.0816.05	Hexagonal head screw 8x16 8.8 uni 5739 zinc plated
150	03.11.0540.00	Elastic pin 5x40
151	09.00.3564.00	Safety hook connecting pin
152	07.07.0845.02	Hexagonal head screw 8x45 8.8 uni 5737 zinc plated
153	04.07.2020.01	Upper CF3 plate (20-20 and 22-22) zinc plated
154	04.07.2222.00	Hold pipe collar CF3 22-22
155	07.07.1240.01	Hexagonal head screw 12x40 8.8 uni 5739
156,1	09.00.3621.00	Right safety hook support
156,2	09.00.3621.01	Left safety hook support
157	07.07.1235.05	Hexagonal head screw 12x35 8.8 uni 5739 zinc plated
158	03.07.1235.01	Washer 12,5x35x5 zinc plated
159	07.03.0625.02	Socket head screw 6x25 UNI 5931 zinc plated
160	01.14.3552.00	Derling plate
161	03.06.0618.01	Washer ø 6 UNI 6593 (6,2x18x1,6) zinc plated
162	07.02.0006.01	Self-locking nut M 6



Pos.	Code	Description
170	07.06.0823.00	Round head square neck bolt 8x23 8.8 with Self-locking nut
171,1	09.00.0120.40	Right angle reel bar (13 springs)
171,2	09.00.0120.41	Left angle reel bar (13 springs)
171,3	09.00.0120.50	Right angle reel bar (15 springs)
171,4	09.00.0120.51	Left angle reel bar (15 springs)
171,5	09.00.0120.42	Complete right reel (13 springs)
171,6	09.00.0120.43	Complete left reel (13 springs)
171,7	09.00.0120.52	Complete right reel (15 springs)
171,8	09.00.0120.53	Complete left reel (15 springs)
172,1	03.05.0122.00	Double spring for left side windrow
172,2	03.05.0122.01	Double spring for right side windrow
173	06.02.0123.00	Spring locking plate
174	07.02.0006.01	Self-locking nut M 6
175	03.05.1191.01	Frontal spring locking plaque
176	07.07.0616.05	Hexagonal head screw 6x16 8.8 uni 5739 zinc plated
177,1	03.05.1191.00	Frontal right spring for side delivery rake
177,2	03.05.1191.02	Frontal left spring for side delivery rake
178	03.11.0732.01	Elastic pin 7x32 zinc plated
179	01.14.0075.00	Rear reel support cap
180	03.07.2035.00	Washer 20,5x35x4
181	03.03.6204.02	Bearing 6204/2RS - 20x47x14
182	07.02.0016.01	Self-locking nut M 16
183	09.00.0054.05	Driving crosswise 5 reels oleodinamic
184	09.00.0055.05	5 holes plate
185	03.07.1356.00	Washer 13x56x8

186	03.08.0012.03	Lock washer ø12 DIN 6798j zinc plated
187	06.02.0070.00	Crosswise lock plate
188	07.07.1240.05	Hexagonal head screw 12x40 8.8 uni 5739 zinc plated
189	07.07.0810.04	Hexagonal head screw 8x10 8.8 uni 5739
190	06.02.0125.00	Zinc plater lock washer
191	01.14.0078.00	Reel support
191,1	09.00.0078.00	Complete reel support
192	09.00.0082.00	Reel support spacer
193	09.00.0084.00	Reel support pin
194	06.02.0085.00	Reel support crowned cap
195	03.09.0053.00	Snap ring WA-SB 53
196,1	11.012.0121.04	13 springs right reel plate
196,2	11.012.0121.05	15 springs right reel plate
196,3	11.012.0121.40	13 springs left reel plate
196,4	11.012.0121.50	15 springs left reel plate
197	09.00.0055.50	5 holes plate with domed centre
198	06.02.0091.00	Crosswise crowned cap
199	09.00.1192.00	Driven crosswise center pin
200	03.03.6206.00	Bearing 6206 - 30x62x16
201	09.00.0094.00	Crosswise internal spacer
202	09.00.0095.05	Driven crosswise 5 reels
203	09.00.0097.00	Crosswise rear spacer
204	06.02.0098.00	Rear crosswise cap
205	03.07.1948.00	Washer 19x48x6
206	07.01.0018.07	Castle nut M18 UNI 5594



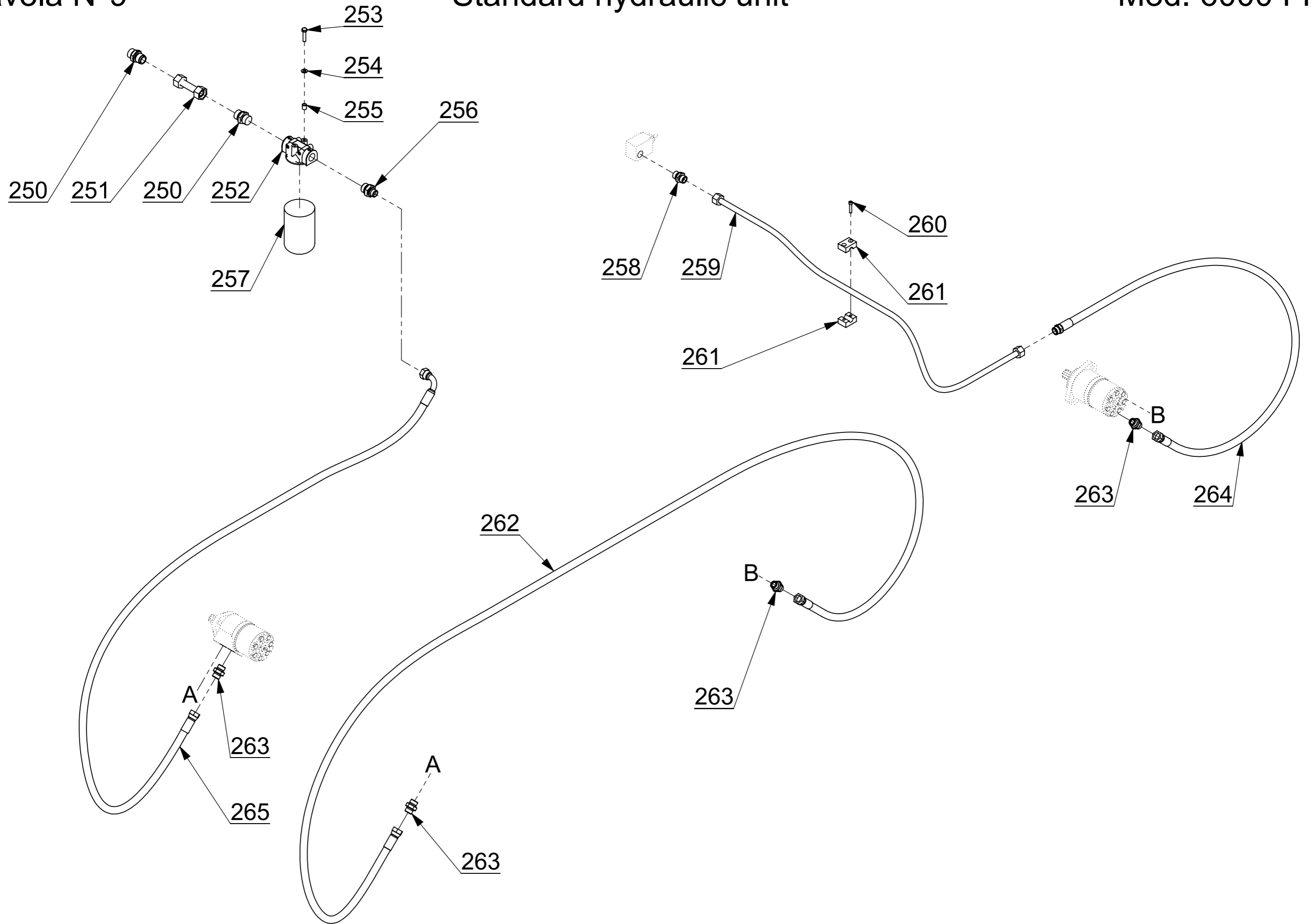
Pos.	Code	Description
210	07.07.1480.02	Hexagonal head screw 14x80 8.8 uni 5737 zinc plated
211	09.00.1720.01	Pump locking bracket
212	09.00.1720.02	Pump locking pin
213	04.13.0034.10	Union elbow Male - Female 3/4"
214	04.13.0034.01	Nipple 3/4" - 3/4"
215	04.15.0034.02	Quick-release coupling female 3/4"
216	04.15.0034.01	Quick-release coupling male 3/4"
217	04.13.3412.02	Nipple 3/4" - 1/2"
218	04.13.0100.04	Pipe fitting Male 1" - Female 3/4"
219,1	04.02.0025.01	Cast iron reversible 25 lt. Oleodinamic Pump
219,2	04.02.0060.01	Cast iron reversible 60 lt. Oleodinamic Pump
220	07.01.0010.04	Nut M10 UNI 5588
221	03.08.0010.00	Grower washer ø10 DIN 7980
222	04.02.0002.90	Fast coupling SER2 for cast iron pump
223	07.07.1020.05	Hexagonal head screw 10x20 8.8 uni 5739 zinc plated
224	09.00.1720.04	Pump attachment support
225	07.02.0014.01	Self-locking nut M 14
226	04.19.2500.00	Rubber pipe
227	04.21.2500.00	Rubber pipe
228	04.13.0012.01	Nipple 1/2" - 1/2"
229	04.15.0012.01	Quick-release coupling male 1/2"
230	04.15.0012.02	Quick-release coupling female 1/2"
231	04.14.0126.15	Pipe fitting DIN TN 126 - 15 LR
232	04.14.0094.15	Pipe fitting DIN TN 94 - 15 LR
233	04.05.0012.04	Max pressure 1/2" valve

234	04.13.0012.06	Swinging nipple male - female 1/2"
235	04.14.0092.22	Pipe fitting DIN TN 92 - 22 LR
236	07.07.1020.05	Hexagonal head screw 10x20 8.8 uni 5739 zinc plated
237	09.00.1907.00	Hydraulic oil tank
238	01.17.0456.01	Tank double bleed female cap
238,1	01.17.0456.04	Tank male cap with double bleed valve
239	01.17.0456.02	Oil inlet filter

Tavola N°9

Standard hydraulic unit

Mod. 6000 FP

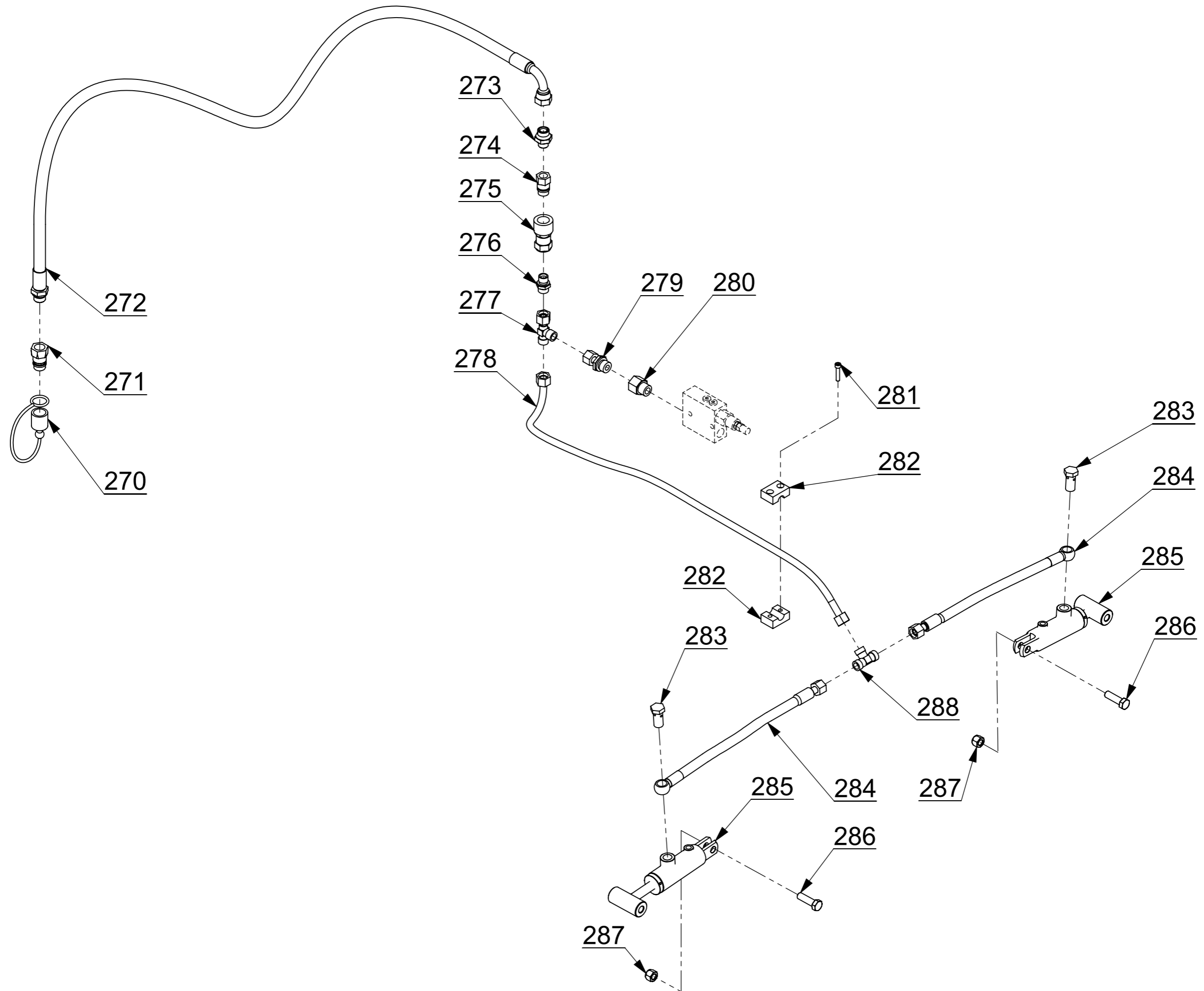


Pos.	Code	Description
250	04.14.3492.18	Pipe fitting DIN TN 92 - 18 LR 3/4"
251	09.00.1938.00	Iron pipe
252	04.08.0442.03	Spin-on filter head
253	07.07.0825.05	Hexagonal head screw 8x25 8.8 uni 5739 zinc plated
254	03.06.0817.01	Washer ø 8 UNI 6592 (8,4x17x1,6) zinc plated
255	09.00.3614.00	Spacer
256	04.13.3412.02	Nipple 3/4" - 1/2"
257	04.08.0442.01	Oil cartridge
258	04.14.0092.15	Pipe fitting DIN TN 92 - 15 LR
259	09.00.1933.00	Iron pipe
260	07.03.0630.02	Socket head screw 6x30 UNI 5931 zinc plated
261	04.07.0015.00	Hold pipe collar C3 15
262	04.19.1370.00	Rubber pipe
263	04.13.0012.01	Nipple 1/2" - 1/2"
264	04.19.3330.00	Rubber pipe
265	04.19.1500.00	Rubber pipe

Tavola N°10

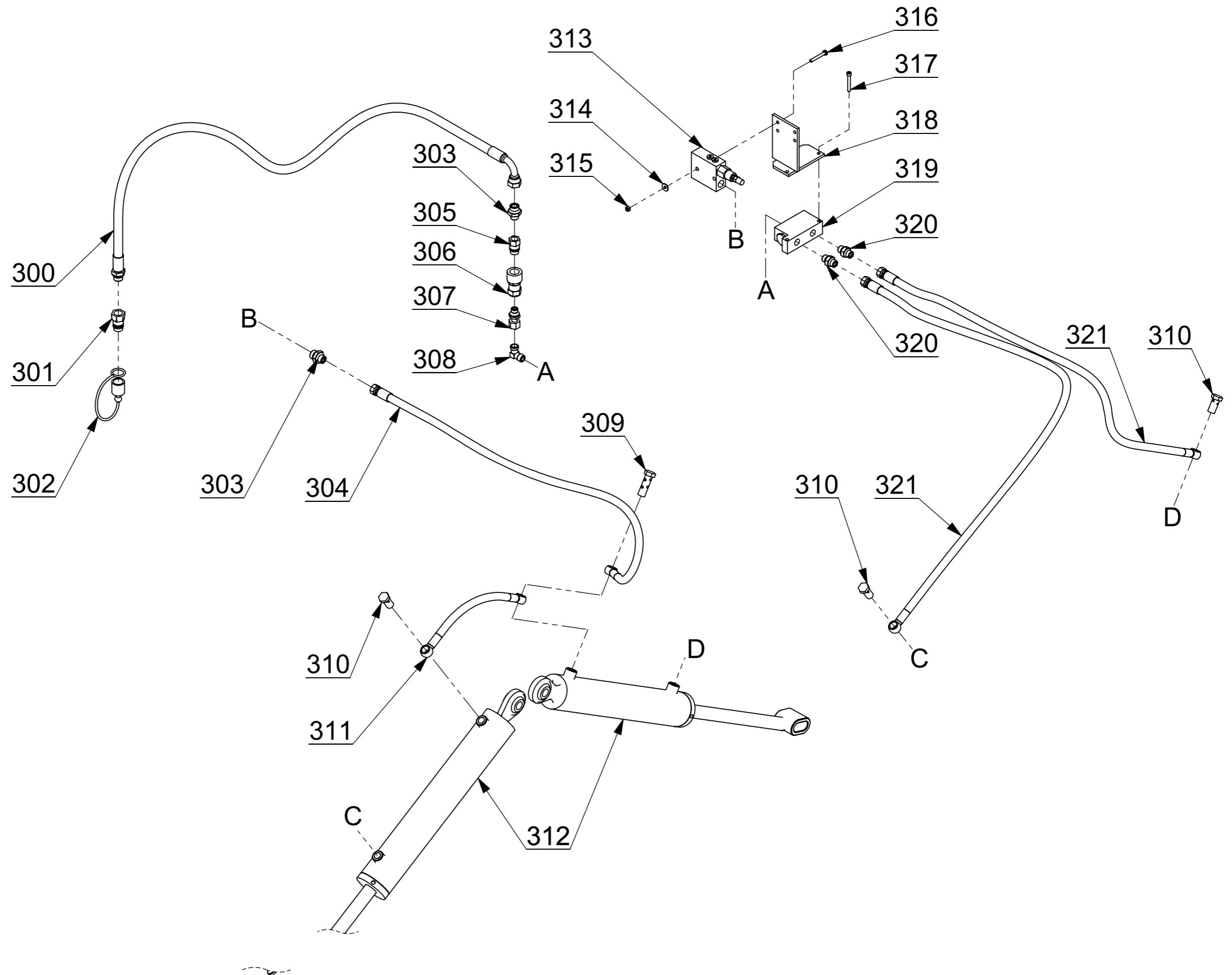
Standard hydraulic unit

Mod. 6000 FP

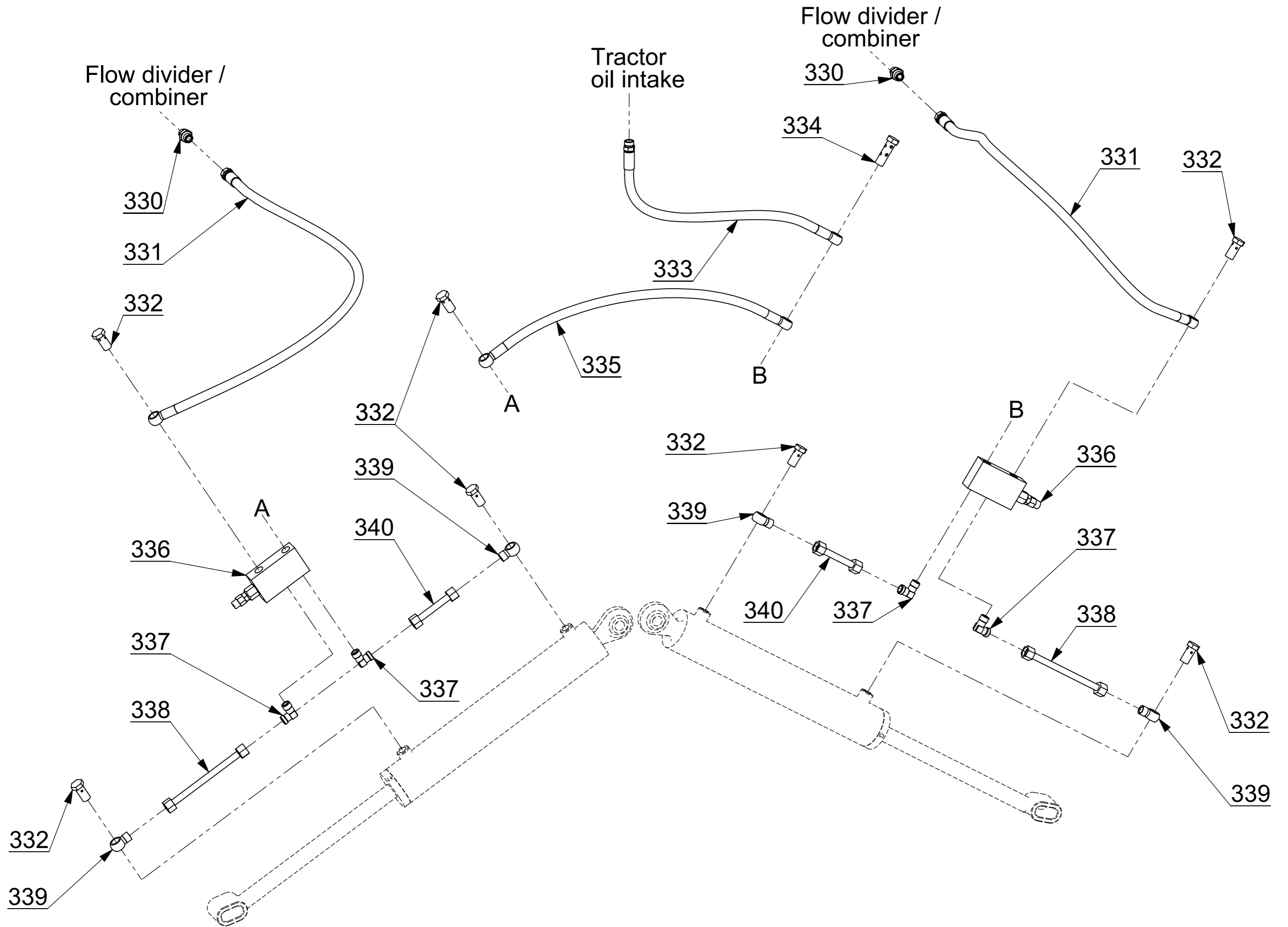


Pos.	Code	Description
270	04.15.0012.04	Cover for quick-release coupling male 1/2"
271	04.15.0012.01	Quick-release coupling male 1/2"
272	04.19.2500.00	Rubber pipe
273	04.13.1238.02	Nipple 1/2" - 3/8"
274	04.15.0038.01	Quick-release coupling male 3/8"
275	04.15.0038.02	Quick-release coupling female 3/8"
276	04.14.0092.12	Pipe fitting DIN TN 92 - 12 LR
277	04.14.0121.12	Pipe fitting DIN TN 121 - 12 L (body)
278	09.00.1935.00	Iron pipe
279	04.14.0126.12	Pipe fitting DIN TN 126 - 12 LR
280	04.13.1238.04	Pipe fitting Male 1/2" - Female 3/8"
281	07.03.0630.02	Socket head screw 6x30 UNI 5931 zinc plated
282	04.07.0012.00	Hold pipe collar C2 12
283	04.13.0038.03	Hollow screw 3/8"
284	04.18.0420.02	Rubber pipe
285	04.09.0026.01	Hydraulic cylinder for safety hook
285,1	04.09.0026.90	Cylinder gasket kit
286	07.07.1240.04	Hexagonal head screw 12x40 8.8 uni 5739
287	07.02.0012.01	Self-locking nut M 12
288	04.14.0100.12	Pipe fitting DIN TN 100 - 12 L

Lifting unit with safety hook and sequence valve
(Standard hydraulic unit)

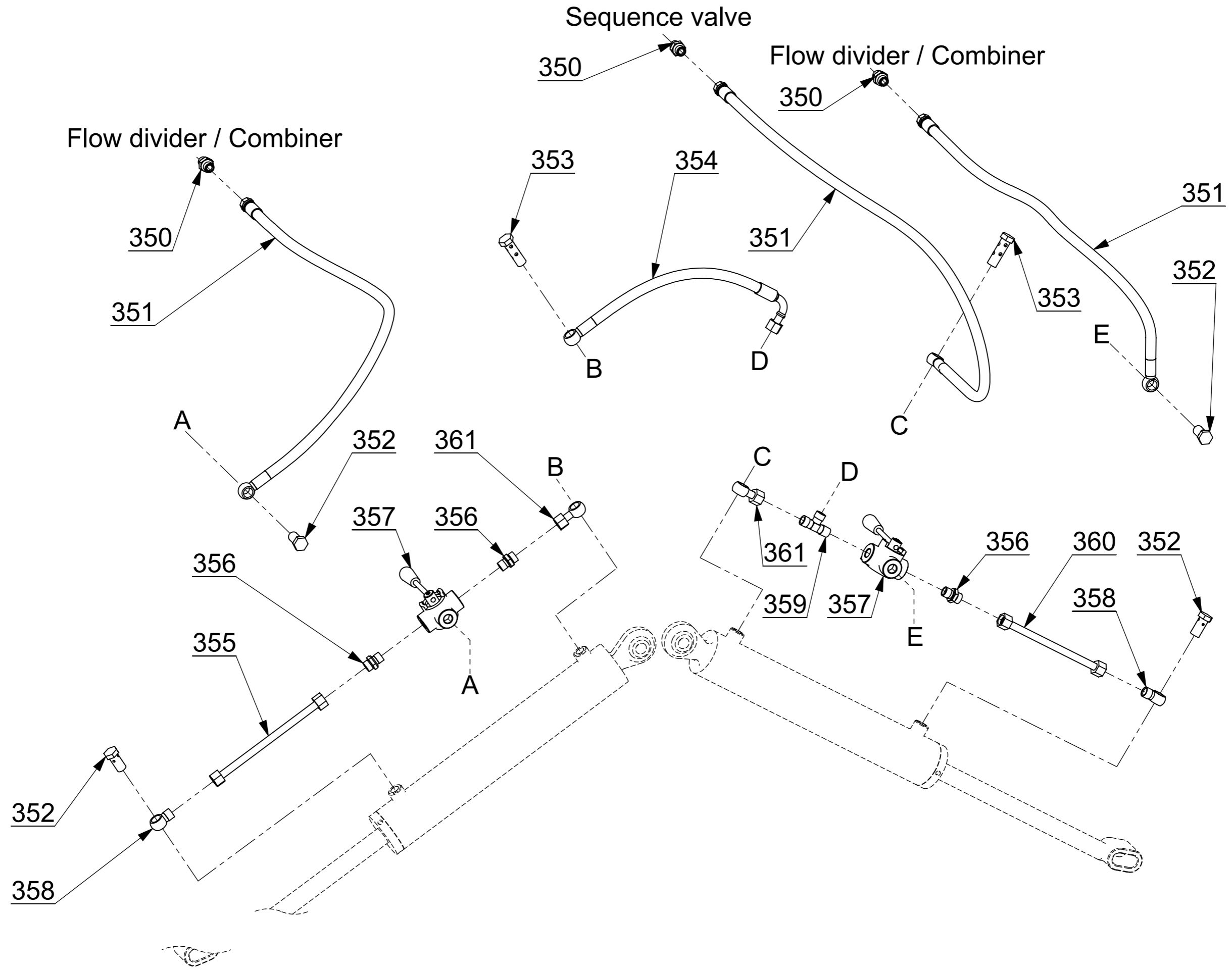


Pos.	Code	Description
300	04.19.2500.01	Rubber pipe
301	04.15.0012.01	Quick-release coupling male 1/2"
302	04.15.0012.04	Cover for quick-release coupling male 1/2"
303	04.13.1238.02	Nipple 1/2" - 3/8"
304	04.18.1100.01	Rubber pipe
305	04.15.0038.01	Quick-release coupling male 3/8"
306	04.15.0038.02	Quick-release coupling female 3/8"
307	04.14.0126.12	Pipe fitting DIN TN 126 - 12 LR
308	04.14.0094.12	Pipe fitting DIN TN 94 - 12 LR
309	04.13.1038.03	Double hollow screw 3/8"
310	04.13.0038.03	Hollow screw 3/8"
311	04.18.0450.01	Rubber pipe
312	04.09.0017.02	Hydraulic cylinder for raking group
312,1	04.09.0003.90	Cylinder gasket kit
313	04.05.0012.00	Priority valve
314	03.06.0618.01	Washer ø 6 UNI 6593 (6,2x18x1,6) zinc plated
315	07.01.0006.05	Nut M6 UNI 5588 zinc plated
316	07.07.0645.02	Hexagonal head screw 6x45 8.8 uni 5737 zinc plated
317	07.03.0645.02	Socket head screw 6x45 UNI 5931 zinc plated
318	09.00.1952.00	Priority valve support
319	04.05.3811.01	Flow divisor
320	04.13.0038.01	Nipple 3/8" - 3/8"
321	04.18.1300.03	Rubber pipe

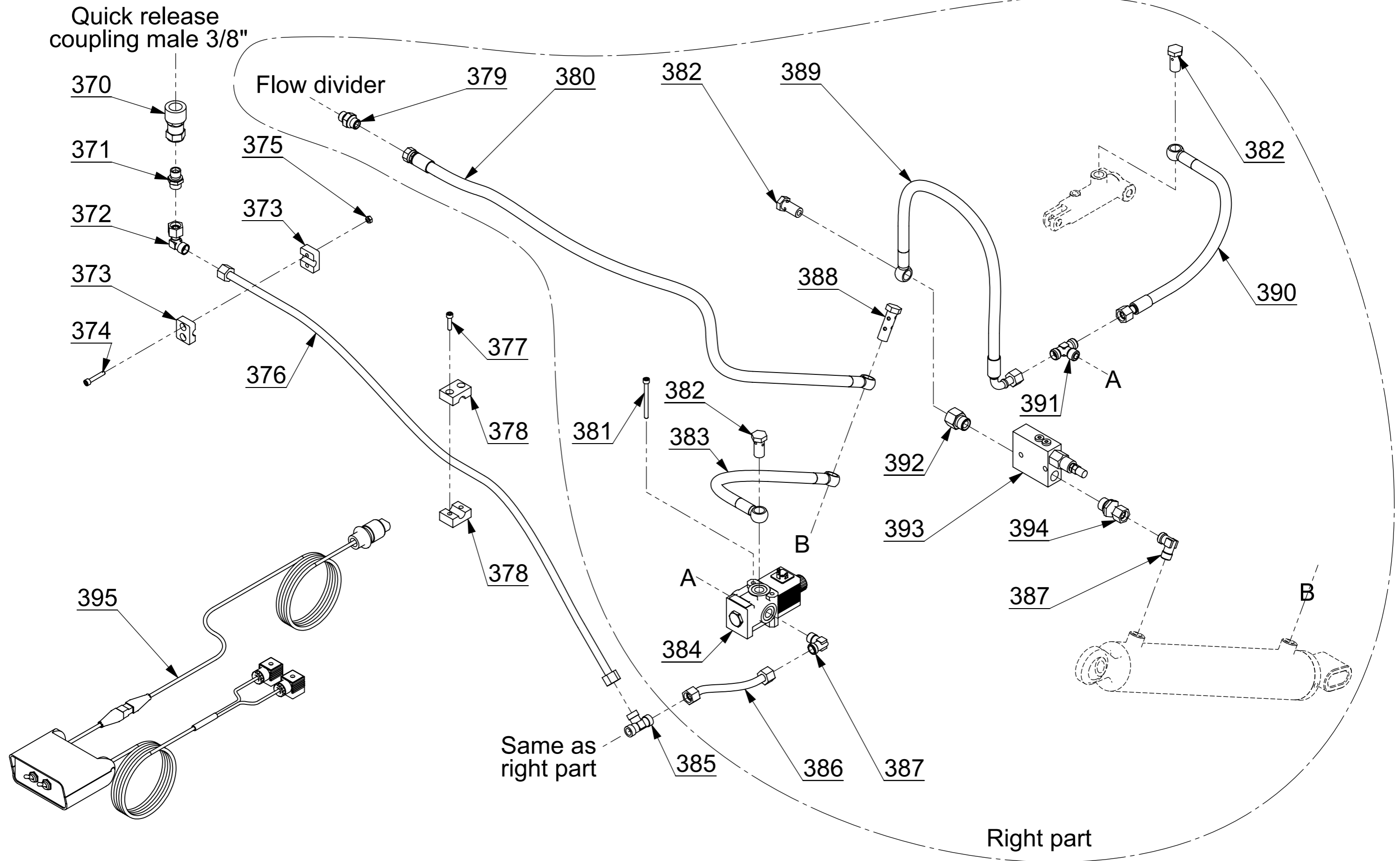


Pos.	Code	Description
330	04.13.0038.01	Nipple 3/8" - 3/8"
331	04.18.1100.01	Rubber pipe
332	04.13.0038.03	Hollow screw 3/8"
333	04.18.0450.00	Rubber pipe
334	04.13.1038.03	Double hollow screw 3/8"
335	04.18.0650.03	Rubber pipe
336	04.05.3801.03	Single overcentre valve
337	04.14.0094.12	Pipe fitting DIN TN 94 - 12 LR
338	09.00.1936.00	Iron pipe
339	04.14.0038.12	Pipe fitting 12 - Eye 3/8" L
340	09.00.1937.00	Iron pipe

Lifting unit with safety hooks and diverters to allow the alternate movement of the raking groups



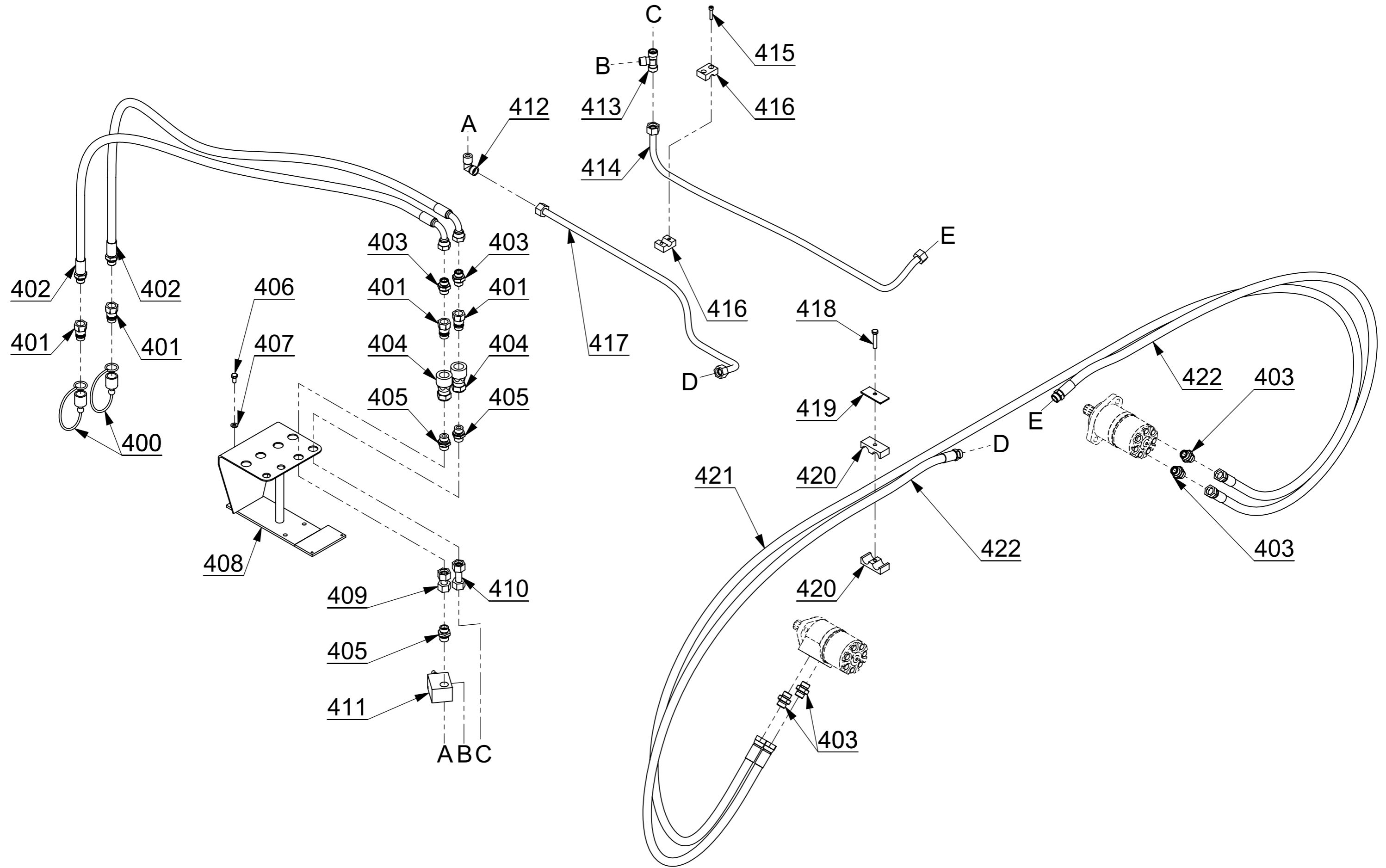
Pos.	Code	Description
350	04.13.0038.01	Nipple 3/8" - 3/8"
351	04.18.1100.01	Rubber pipe
352	04.13.0038.03	Hollow screw 3/8"
353	04.13.1038.03	Double hollow screw 3/8"
354	04.18.0400.03	Rubber pipe
355	09.00.1936.01	Iron pipe
356	04.14.0092.12	Pipe fitting DIN TN 92 - 12 LR
357	04.05.0338.06	Three-way 3/8" cock
358	04.14.0038.12	Pipe fitting 12 - Eye 3/8" L
359	04.14.0127.12	Pipe fitting DIN TN 127 - 12 LR
360	09.00.1937.01	Iron pipe
361	04.14.1238.00	Pipe fitting eye 3/8"



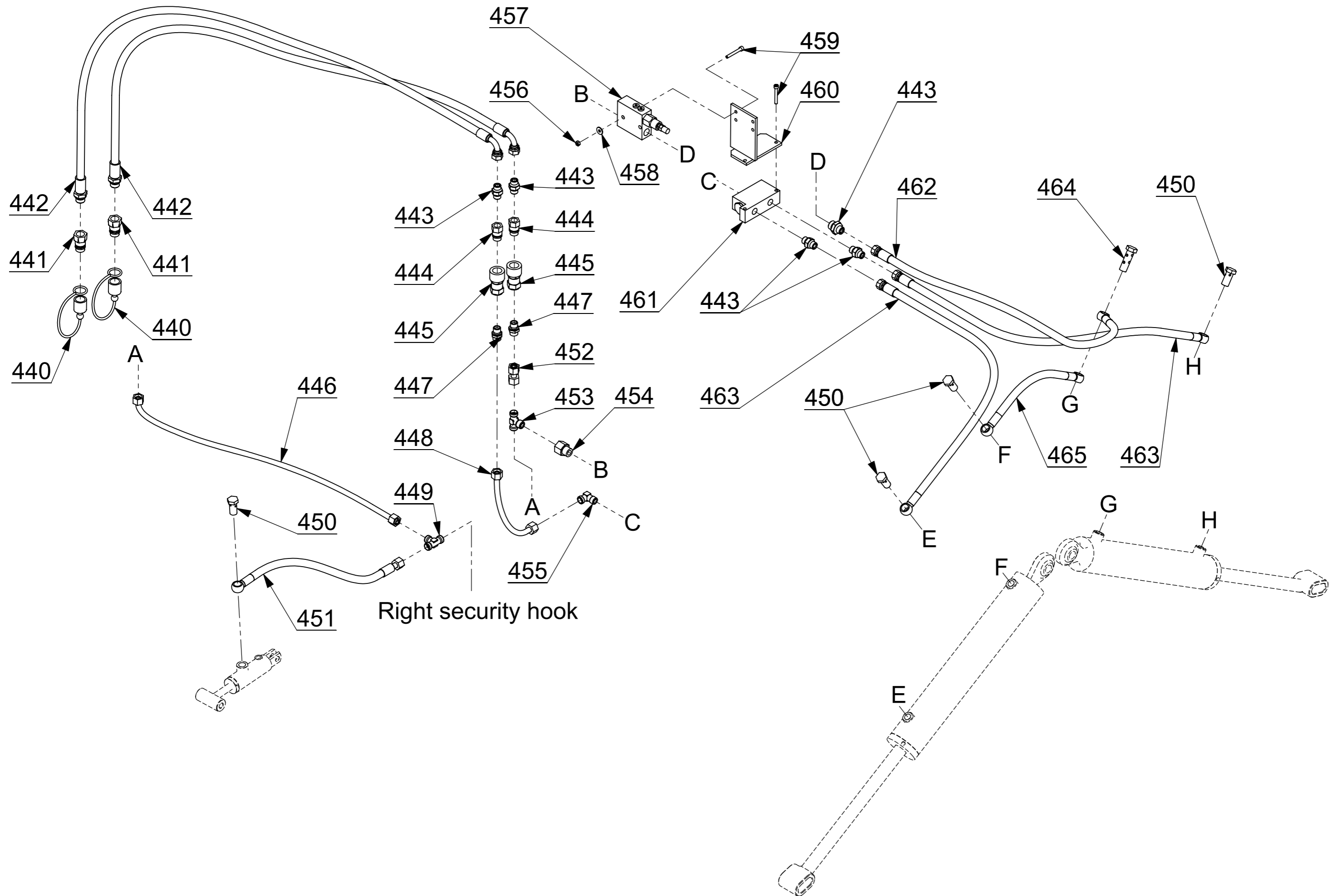
Pos.	Code	Description
370	04.15.0038.02	Quick-release coupling female 3/8"
371	04.14.0092.12	Pipe fitting DIN TN 92 - 12 LR
372	04.14.0119.12	Pipe fitting DIN TN 119 - 12 L (body)
373	04.07.0012.00	Hold pipe collar C2 12
374	07.03.0635.02	Socket head screw 6x35 UNI 5931 zinc plated
375	07.02.0006.01	Self-locking nut M 6
376	09.00.1940.00	Iron pipe
377	07.03.0625.02	Socket head screw 6x25 UNI 5931 zinc plated
378	04.07.0015.00	Hold pipe collar C3 15
379	04.13.0038.01	Nipple 3/8" - 3/8"
380	04.18.1100.01	Rubber pipe
381	07.03.0670.02	Socket head screw 6x70 UNI 5931 zinc plated
382	04.13.0038.03	Hollow screw 3/8"
383	04.18.0480.00	Rubber pipe
384	04.05.0312.07	Solenoid 3 way valve (12 V DC)
385	04.14.0100.12	Pipe fitting DIN TN 100 - 12 L
386	09.00.1963.00	Iron pipe
387	04.14.0094.12	Pipe fitting DIN TN 94 - 12 LR
388	04.13.1038.03	Double hollow screw 3/8"
389	04.18.0670.00	Rubber pipe
390	04.18.0460.01	Rubber pipe
391	04.14.0096.12	Pipe fitting DIN TN 96 - 12 LR
392	04.13.1238.04	Pipe fitting Male 1/2" - Female 3/8"
393	04.05.0012.00	Priority valve
394	04.14.2126.12	Pipe fitting DIN TN 126 - 12 LR 1/2"

395

01.13.0008.00 Pushbutton panel for solenoid valve control (wired)

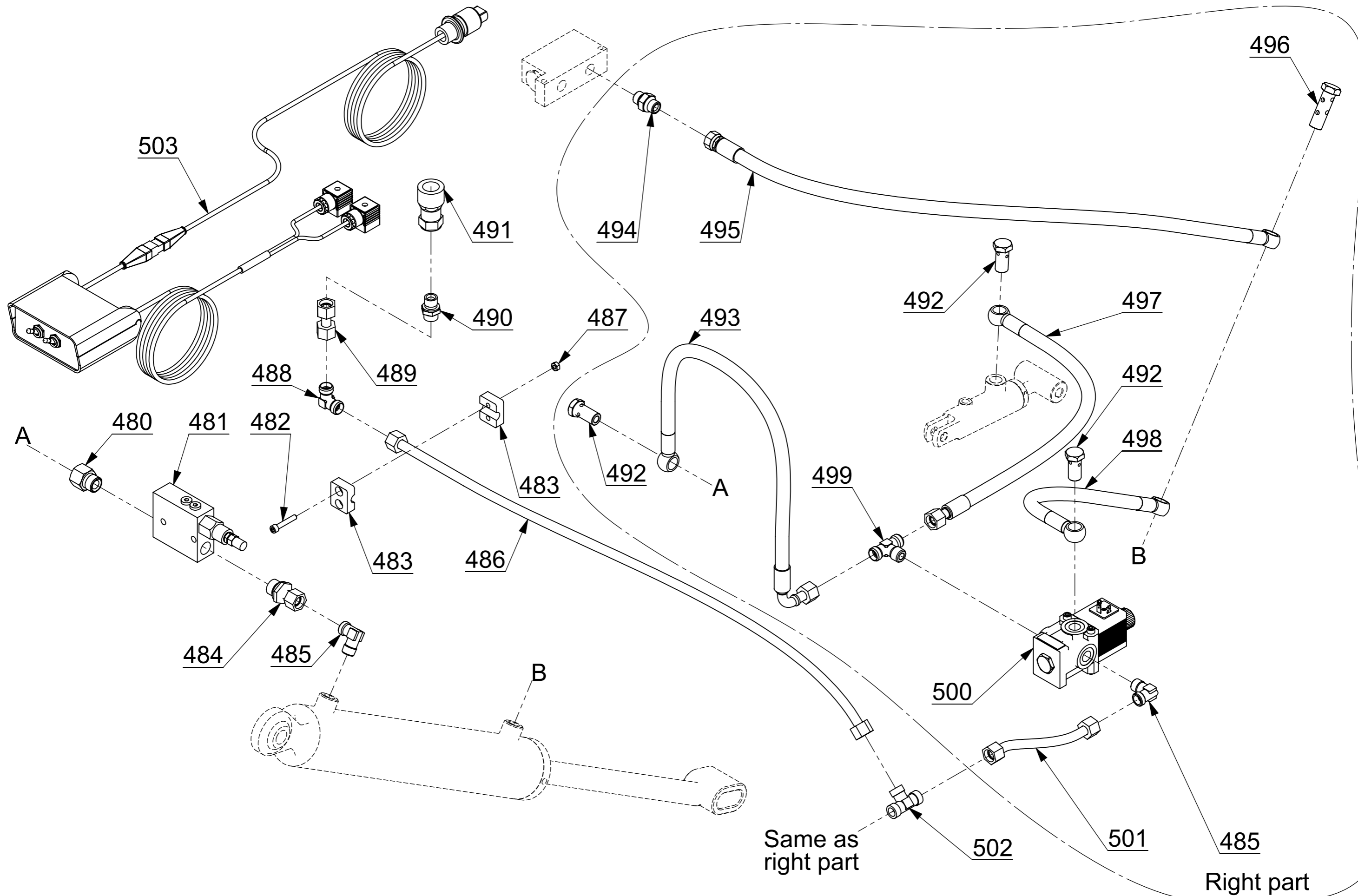


Pos.	Code	Description
400	04.15.0012.04	Cover for quick-release coupling male 1/2"
401	04.15.0012.01	Quick-release coupling male 1/2"
402	04.19.2650.00	Rubber pipe
403	04.13.0012.01	Nipple 1/2" - 1/2"
404	04.15.0012.02	Quick-release coupling female 1/2"
405	04.14.0092.15	Pipe fitting DIN TN 92 - 15 LR
406	07.07.0816.05	Hexagonal head screw 8x16 8.8 uni 5739 zinc plated
407	03.06.0817.01	Washer ø 8 UNI 6592 (8,4x17x1,6) zinc plated
408	09.00.1906.00	Support plate for valves and quick-release coupling
409	09.00.1964.01	Iron pipe
410	09.00.1964.00	Iron pipe
411	04.05.0012.04	Max pressure 1/2" valve
412	04.14.0094.15	Pipe fitting DIN TN 94 - 15 LR
413	04.14.0096.15	Pipe fitting DIN TN 96 - 15 LR
414	09.00.1933.00	Iron pipe
415	07.03.0625.02	Socket head screw 6x25 UNI 5931 zinc plated
416	04.07.0015.00	Hold pipe collar C3 15
417	09.00.1932.00	Iron pipe
418	07.03.0845.02	Socket head screw 8x45 UNI 5931 zinc plated
419	04.07.2020.01	Upper CF3 plate (20-20 and 22-22) zinc plated
420	04.07.2020.00	Hold pipe collar CF3 20-20
421	04.19.3330.00	Rubber pipe
422	04.19.1370.00	Rubber pipe



Pos.	Code	Description
440	04.15.0012.04	Cover for quick-release coupling male 1/2"
441	04.15.0012.01	Quick-release coupling male 1/2"
442	04.18.2650.00	Rubber pipe
443	04.13.0038.01	Nipple 3/8" - 3/8"
444	04.15.0038.01	Quick-release coupling male 3/8"
445	04.15.0038.02	Quick-release coupling female 3/8"
446	09.00.1935.00	Iron pipe
447	04.14.0092.12	Pipe fitting DIN TN 92 - 12 LR
448	09.00.1934.00	Iron pipe
449	04.14.0100.12	Pipe fitting DIN TN 100 - 12 L
450	04.13.0038.03	Hollow screw 3/8"
451	04.18.0420.02	Rubber pipe
452	09.00.1229.01	Iron pipe
453	04.14.0096.12	Pipe fitting DIN TN 96 - 12 LR
454	04.13.1238.04	Pipe fitting Male 1/2" - Female 3/8"
455	04.14.0094.12	Pipe fitting DIN TN 94 - 12 LR
456	07.02.0006.01	Self-locking nut M 6
457	04.05.0012.00	Priority valve
458	03.06.0618.01	Washer ø 6 UNI 6593 (6,2x18x1,6) zinc plated
459	07.03.0645.02	Socket head screw 6x45 UNI 5931 zinc plated
460	09.00.1952.00	Priority valve support
461	04.05.3811.01	Flow divisor
462	04.18.1100.01	Rubber pipe
463	04.18.1300.03	Rubber pipe
464	04.13.1038.03	Double hollow screw 3/8"

465 04.18.0450.01 Rubber pipe



Pos.	Code	Description
480	04.13.1238.04	Pipe fitting Male 1/2" - Female 3/8"
481	04.05.0012.00	Priority valve
482	07.03.0635.02	Socket head screw 6x35 UNI 5931 zinc plated
483	04.07.0012.00	Hold pipe collar C2 12
484	04.14.2126.12	Pipe fitting DIN TN 126 - 12 LR 1/2"
485	04.14.0094.12	Pipe fitting DIN TN 94 - 12 LR
486	09.00.1935.01	Iron pipe
487	07.02.0006.01	Self-locking nut M 6
488	04.14.0099.12	Pipe fitting DIN TN 99 - 12 L
489	09.00.1229.01	Iron pipe
490	04.14.0092.12	Pipe fitting DIN TN 92 - 12 LR
491	04.15.0038.02	Quick-release coupling female 3/8"
492	04.13.0038.03	Hollow screw 3/8"
493	04.18.0670.00	Rubber pipe
494	04.13.0038.01	Nipple 3/8" - 3/8"
495	04.18.1300.03	Rubber pipe
496	04.13.1038.03	Double hollow screw 3/8"
497	04.18.0460.01	Rubber pipe
498	04.18.0480.00	Rubber pipe
499	04.14.0096.12	Pipe fitting DIN TN 96 - 12 LR
500	04.05.0312.07	Solenoid 3 way valve (12 V DC)
501	09.00.1963.00	Iron pipe
502	04.14.0100.12	Pipe fitting DIN TN 100 - 12 L
503	01.13.0008.00	Pushbutton panel for solenoid valve control (wired)