



**30020 Annone Veneto (Ve) – ITALIA**

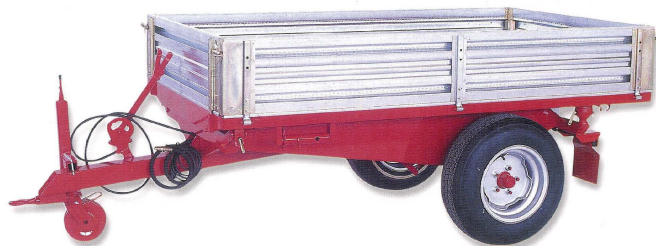
**Via Quattro Strade, 69 (Zona Art.)**

**Tel. +39 0422 769221 – Fax +39 0422 769948**

**[www.omravenna.it](http://www.omravenna.it) - [info@omravenna.it](mailto:info@omravenna.it)**

## **INFORMATIONS AND TECHNICAL DATES**

## **AGRICULTURAL TRAILER FOR TRACTOR**



**Model:**

RT 250

**Typ:**

3 ways tipping trailer

**Number:**

788

**Construction Year:**

2014

**CE-CE**

## CE Certificate of conformity

**RAVENNA s.n.c. OFFICINE METALMECCANICHE**  
30020 Annone Veneto (Ve) – ITALIA  
Via Quattro Strade, 69 (Zona Art.)  
Tel.: +39 0422 769221 – Fax: +39 0422 769948  
E-mail: info@omravenna.it

It is hereby certified that the trailer:

### AGRICULTURAL TRAILER

**Model:**

RT 250

**Typ:**

3 ways tipping trailer

**Number:**

788

**Construction Year:**

2014

IS CONFORMABLE TO THE LAW:

Direttiva 98/37/CEE e successive modificazioni  
Direttiva 89/336/CEE e successive modificazioni.

UNI EN 292-1, UNI EN 292-2, UNI EN 294, UNI EN 982, UNI EN 1853, EN 1553, ISO 5676,  
ISO 5692

TRAILER MUST BE HOOKED ON TO A TRACTOR

**Tractor must be conformable to the CE European Community**

Annone Veneto, 22.01.2015

RAVENNA s.n.c.

**CE-CE**

Manufacturer:

**RAVENNA s.n.c. OFFICINE METALMECCANICHE**  
30020 Annone Veneto (Ve) – ITALIA  
Via Quattro Strade, 69 (Zona Art.)  
Tel.: +39 0422 769221 – Fax: +39 0422 769948  
E-mail: info@omravenna.it

Trailer describion:

**AGRICULTURAL TRAILER FOR TRACTOR**

MARKING:

**CE**

**Model:**

RT 250

**Typ:**

3 ways tipping trailer

**Number:**

788

**Construction Year:**

2014

**Dead weight capacity:**

Kg 2000

**Trailer weight:**

Kg 500

**Tyre pressure:**

2,8 bar

**TECHNICAL DATES**

<b>Model</b>		<b>RT 25</b>		<b>RT 250</b>
Dead weight capacity	Kg	<b>2500</b>		<b>2000</b>
Loading weight on the hitch	Kg	<b>280</b>		<b>280</b>
Trailer dimension				
Lenght	Mm	<b>3.480</b>		<b>3.480</b>
Width	mm	<b>1.550</b>		<b>1.550</b>
Height	mm	<b>1.180</b>		<b>1.180</b>
Trailer weight	Kg	<b>500</b>		<b>500</b>
Body dimension				
Lenght	mm	<b>2.500</b>		<b>2.500</b>
Width	mm	<b>1.500</b>		<b>1.500</b>
Height	mm	<b>350</b>		<b>350</b>
Tyres		<b>10.080.12 PR 8</b>		<b>10.080.12 PR 6</b>
Tyre pressure	bar	<b>2,8</b>		<b>2,8</b>
Max speed	Km/h	<b>25</b>		<b>25</b>
Tipping		<b>hydraulic</b>		<b>hydraulic</b>
Max oil pressure	bar	<b>70</b>		<b>70</b>
Typ		<b>3 ways tipping</b>		<b>3 ways tipping</b>
Max tipping	°	<b>45</b>		<b>45</b>
Brakes		<b>mechanic</b>		<b>mechanic</b>
Light system				
	Volts	<b>12/24</b>	<b>12/24</b>	<b>12/24</b>

**INSTRUCTION FOR USE SUMMARY  
BY SYMBOLS AND PLATES ON THE TOWING TRAILER  
PLUG AND SOCKET DIAGRAM OF THE ELECTRICAL SYSTEM  
PRELIMINARY CHECKS**

**SCHEMA IMPIANTO ELETRICO PER PRESA E SPINA**

**PRIMA DELL'USO CONTROLLARE:**  
- serraggio dei bulloni delle ruote  
- pressione delle gomme



**WARNING!**  
**DANGER OF CRUSHING HANDS AND FINGERS**  
**TAKE PARTICULAR CARE WHEN RELEASE SIDES, POSSIBLE RELEASE OF AUTOMATIC DISCHARGE**  
**DOORS , TIPPING**  
**(LIFTING AND LOWERING)**



**WARNING!**  
**KEEP DISTANCE FROM THE TOWING TRAILER, IN PARTICULAR DURING**  
**TIPPING OPERATIONS**



**WARNING!**  
**READ WITH ATTENTION THIS MANUAL BEFORE USING THE TOWING**  
**TRAILER**



**ON THE TOWING TRAILER FRONT THERE IS ALSO A PLATE WITH THE FOLLOWING INFORMATION:**

1. **IS FORBIDDEN: MOVE THE TOWING TRAILER MANHANDLE**
2. **IS FORBIDDEN: STEP ON TOWING TRAILER ON THE MOVE**
3. **IS FORBIDDEN: CARRYING PEOPLE BY THE TOWING TRAILER**
4. **IS FORBIDDEN: MOVE THE TRAILER WHEN THE TRAILER IS TIPPING**
5. **IS FORBIDDEN: WORK UNDER THE TIP TRAILER IF THERE ISN'T A MECHANICAL SUPPORT**



**WARNING!  
DON'T REMOVE TRAILER SYMBOLS AND PLATE!**

# CHAPTER 1

## GENERAL SAFETY DEFINITIONS AND CONDITIONS

In compliance with the current regulations on safety of work, this machine has been designed, approved and built keep to limitations of good technique for mechanical units, hydraulic circuit, electrical system and their security devices.

This "Procedure and maintenance manual" has been edited keep to 98/37/CE Directive and in regard with machine normal condition in use in order to inform operators/users about residual risks that it presents.

### 1.1 WARNING

The costumer, getting this Instruction Manual, is committed to make a strictly confidential use for operators during operation, carrying, installation, assembling, disassembly and use of the machine.

He must follow the machine including case of transfer of use to a third party.

In this Instruction Manual there are the following definitions:

a)"**Danger zone**" (98/37/CE Directive): Every zone inside and next to the machine where is dangerous for the health of people;

b)"**Exposed person**" (98/37/CE Directive): Every person who are totally or partly exposed to a dangerous zone;

c)"**User**" (98/37/CE Directive): The person or people who are authorized to instal, work, set, doing maintenance, clean, repair and transport the machine;

d)"**PPE**" (98/37/CE Directive): Personal protective equipment: Every equipment that the user must use and wear for protect himself to every risk of dangerous situation.

e)"**Consumer**": the person, entity or society who bought or rent the machine and want to use for the intended use;

f)"**Specialized personnel**": person who is trained and qualified to perform maintenance or repair operation, who require a knowledge of safety devices and the operation of the machine;

g)"**Dealer**": structure legally authorized by the manufacturer that has specialized staff and enabled to carry out all servicing, maintenance and repairs that are necessary to maintain the machine in good working.



Before use and / or intervene on the machine, the operator must be fully aware of the function and the position of all the commands of the machine and of the technical and functional characteristics of the same.

The Manual is a guide for proper use and maintenance of a good trailer can also be useful to more experienced operators. It contains important information to ensure your own and others' safety and useful for a fair and effective use of this medium: it will always be available to made known to the operator.

A prudent operator is the best insurance against accidents.

If you are in doubt about the exact interpretation of the instructions in this manual or the use of the vehicle, contact a dealer without hesitation.

Always keep the manual handy for future reference in case of need, in case the copy in your possession deteriorate, do not hesitate to ask your dealer to another.



**If the trailer is not used carefully following the instructions given in this manual, the manufacturer declines all responsibility for any damage to people, animals and / or property. This Manual has been prepared with particular attention to the prevention of harm and dangerous situations that may arise using the trailer improperly, it provides specific information necessary for the use of the vehicle safely, for inspection and for maintenance.**

## **IT IS FORBIDDEN TO COPY THIS MANUAL WITHOUT PERMISSION**

### **1.2 SAFETY INSTRUCTIONS**



**The operator must:**

- 1 - Keep in an easily and quickly accessible to this user.
- 2 - Use with care and make appropriate safety devices and protective equipment prepared and provided by the employer.
- 3 - FOLLOW the rules and instructions given by the manufacturer of trailer, by the employer or person in charge of the collective security and individual.
- 4 - Report immediately to the proper authorities any deficiencies of these safety devices and protective equipment, as well as other dangerous condition of which it becomes knowledge, by intervening directly and promptly, in an emergency, within its competence and ability to eliminate or reduce the causes which have produced the danger.

5 - Keep the machine in order: Have any repairs to the machine by qualified personnel using original spare parts.

6 - Dress appropriately, his clothing should be as fit as possible, not too wide and free of loose and footholds, the sleeves must have the elastic outside of work clothing should not be present belts, braces rings and necklaces; PPE provided must be used.

It's absolutely forbidden to use loafers, clogs, slippers or other footwear that may limit or affect the stability and mobility of the operator.

7 - Avoid unstable positions, arranged always in a safe position in relation to the trailer and balance: in particular it off of the trailer moving and do not move the trailer to push.

8 - Disconnect the battery power before any repair and / or maintenance on the electrical system. Carefully follow the instructions given in this manual.

9 - Remove the hydraulic pressure before working on the same.

10 - Make sure, before using the trailer, the proper functioning of the safety devices and protective equipment

**The operator must not:**

1 - Remove or modify, without prior permission, the safety, protection, measuring and reporting the trailer is equipped.

2 - Perform operations on its own initiative or maneuvers within its competence that could endanger the safety of self or others.

**Specific instructions for the use of the trailer:**

The 3-ways tipping trailer can never be used alone, but always and only coupled to a tractor to be towing.

Operate a tractor with or without a trailer is not the same thing: the presence of the trailer limits the manoeuvrability of the tractor and requires more precautions in the use of the whole.

It is therefore considered appropriate to summarize below some specific instructions for the use of the tractor and towed trailer.

The trailer, having passed the stability tests provided for by the rules, is not subject to any kind of tipping on the condition that do not exceed the maximum permissible loads and shown on the rating plate on the machine and follow the instructions given in this manual.

The operator of a tractor with a trailer, whether it operates in a continuous manner that occasionally, must possess appropriate knowledge and skills, and follow simple and fundamental rules of conduct to ensure the safety of himself and others.

**The tractor operator must:**

- Have quick reflexes;
- Be able to evaluate the weight, stability and balance of the load;
- Be able to evaluate size, distance and speed;
- Be careful and with great sense of responsibility;
- Carefully check the instructions for the maximum transportable load from the trailer;
- Be sensitive to the safety
- Use on land eligible
- Keep a safe distance from other vehicles;
- Keep to the right, especially in bends and junctions;
- Give priority at intersections to those coming from the right;
- Always give way to pedestrians;
- When driving on the road follow the signs
- Always be able to control tractor, trailer and, except in special cases, also the load;
- Drive the caisson always lowered, both trailer load discharge;
- Always make sure that the height is sufficient for the passage of the trailer and its load;
- Slow down in poor visibility, the curves, in the crossroads, narrow passages, in underpasses, in all zones which provide a limited height and downhill;
- Adapt the speed to ground conditions, visibility and load;
- Signal their presence with the tone of which the tractor is fitted;
- Move on flat surfaces, and sufficiently compact as possible without harshness, without sharp bends, marked descents and narrow passages.
- Before crossing a bridge or walkway, check the size and stability
- Before moving check for people, animals and obstacles, if need to move people and animals and removing obstacles;
- Work with the trailer at a safe distance from power lines;

- After use, place the trailer, unhooked from the tractor protected from the weather and enter the parking brake.

**The tractor operator must not:**

- Exceed the maximum capacity of the trailer provided by the manufacturer;
- Distracted while driving
- Run, or race with the trailer
- Make sudden accelerations, steering and braking because the inertia of the load can cause skidding and / or scuffs.
- Carry out the operation of tipping trailer at the same time advancing;
- Transporting people on the trailer
- Leave the trailer with the body raised
- Driving over obstacles on the ground;
- Drive with wet or oily hands or shoes;

**1.2 RESIDUAL RISKS ZONE**

They were adopted on the machine all necessary measures to eliminate the possible risks of use for the operator, it has areas called "Residual risk".

The areas designated as such are related to moving parts of the machine that could be dangerous for the operator, if it so improper use or commit an error of judgment or inattention: the machine is however equipped with suitable signs placed on these areas.

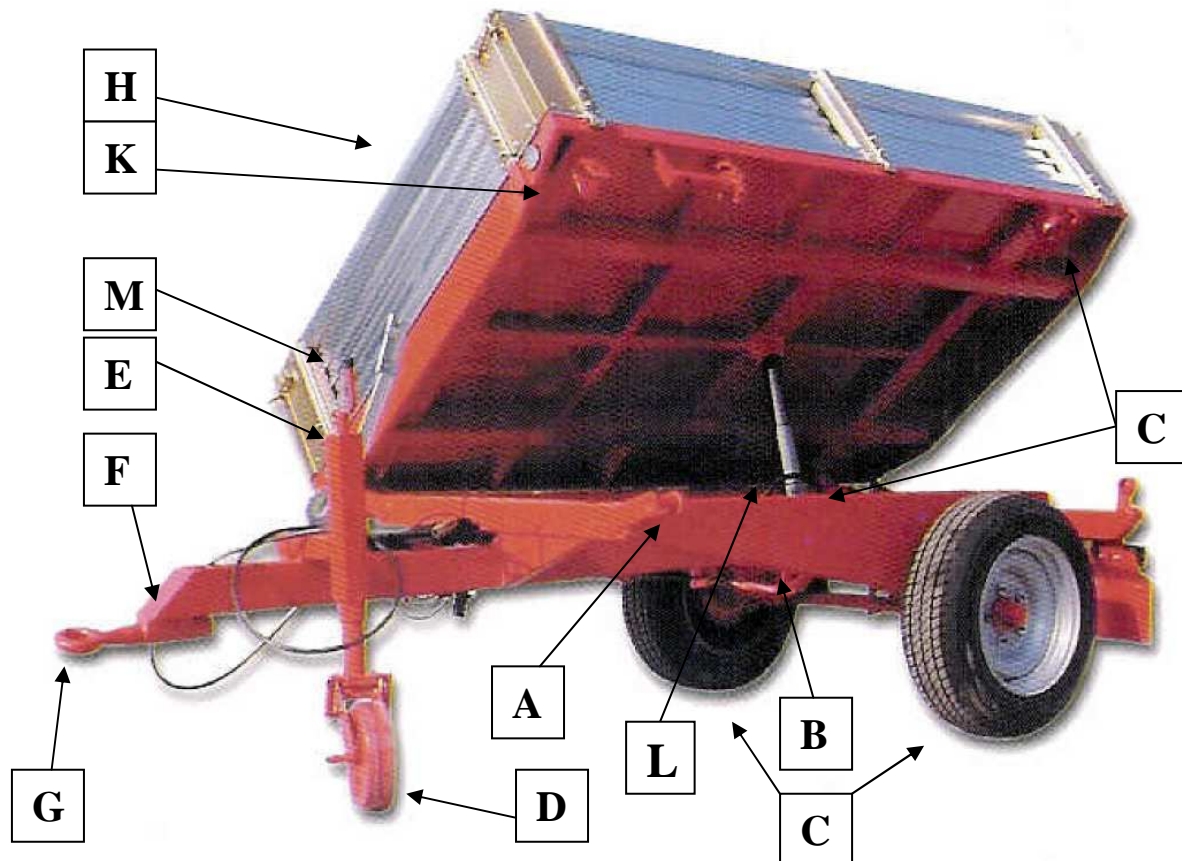
The majority of the residual risks of this type of machine is due to the mode of use: Use a careless, clumsy and disrespectful of safety requirements can lead serious consequences for the operator.

It is very important that the operator is strictly and scrupulously abide by the instructions provided both by signs placed on the trailer in this Manual.

## CHAPTER 2

### GENERAL SAFETY DEFINITIONS AND CONDITIONS

The trailer towed by tractor tipping trilateral manufactured by Officine Ravenna is towing type and is designed to be towed by a tractor and transport goods of all kinds



**Photo 1**

- It consists essentially of (Photo 1):
- A frame A rectangular shaped metal profiles;
- An axle with two tires B C inflatable tires;
- A compact D height adjustable via the knob E to support and maintain a horizontal position when the trailer is disconnected from the tractor
- A jockey wheel D with E to support and maintain a horizontal position when the trailer is disconnected from the tractor
- F a rudder fixed to the frame complete with eye G for attachment to the tractor.

- A body H equipped with four manually removable sides, of rectangular shape, attached to the frame by means of two K (arranged at the top front of the base) and two nuts spherical I (arranged at the top rear) all equipped with locking pins; on the four sides are provided hooks for locking the rope load on the two longitudinal sides and two devices (one per side) for tensioning the same
- A hydraulic tipping system constituted by the lifting cylinder body L connected to the hydraulic system of the tractor by means of a flexible pipe quick coupling so as to be able to control the tilting from the tractor seat
- The braking system is connected by mechanic wire to a handbrake lever(M) wich can be moved and fixed to the tractor. When the trailer is disconnected by tractor, the handbrake lever is locked in a special housing in the trailer rudder and works as parking brake.
- A lighting system, fixed in the back of trailer for road travelling, is connected by quick plug and cable to tractor and works to 12/24 volt. O

On request the trailer can be equipped without braking system and/or without lighting system. The client must provide install of the respective system before use.

## 2.1 RECOMMENDED USE

The trailer towing made by Officina Metalmeccaniche Ravenna it's a machine that can be use for carrying various type of material. The side allow you to load bulk material.

The load must be positioned in line with the barycentre of trailer avoiding the risk of overturning above all if the trailer is disconnected by the tractor. To facilitate the loading and unloading of material the side can be removed, the load must be secured with rope or belt fixed to dedicated hook in the side of flat bed. The bulky loads must not exceed the size limit of the trailer and 4 meters above the ground.

The trailer can be used only by an expert and authorized operator.



### **WARNING!**

**The trailer can not be used for other purpose of those provided and not comply in this manual. The trailer can not be used for other purpose of those provided and not comply of those described in this manual: each other use is considered improper and forbidden.**

**Officina Metalmeccaniche Ravenna decline each responsibility for people, animal or object injury caused by improper use of the machine or modification to the same not authorized.**

## 2.2 WORKING CAPACITY

The trailer can carry load of different type and nature compatibility with the dimension of side and flat bed in function of barycentre of machine: The bulk don't exceed the values indicate in the plate fixed on trailer and in the top of this manual. Is necessary to respect the values or risk overturning the machine.



**The machine is provided with its box with specific dimension and carrying capacity: In this situation is calculated the maximum carrying capacity reported in table and predisposed the relative safety system. If the trailer is equipped with another configuration, who set up the equipment must ensure the working safety operation of machine. Officina Metalmeccaniche Ravenna decline each responsibility at about!**

## 2.3 USE RESTRICTIONS

The machine can not be used with other terms provided in the paragraph 2.1



**Is strictly forbidden remove, camper and modify in any way the safety system present in the machine.**

## 2.4 SOLUTIONS ADOPTED TO PREVENT RISK

### 2.4.1 DESCRIPTION OF SAFETY DEVICES

The trailer is equipped with the following safety devices:

- Mechanical service brake;
- Parking brake;
- Device height adjustment wheel parking;
- Lock box with pins and cotter safety to prevent accidental overturning;
- Side with safety cotter;
- Limit wire to prevent the exceed tipping max limit;
- Safety catch (to prevent the accidental fall of box during repairing or maintenance operation);
- Latches and locking tensioning ropes load;
- Electrical system performed according to the existing norms;
- Plates showing max flow attached to the frame;
- Plates with main operational instructions, attached to the frame;
- Signs warning of danger in areas of residual risk;

### 2.4.2 AREA OF WORK

The tractor operator to use the trailer in a safe condition must remain seated in the driving seat: any other position is not allowed since it could be dangerous: the loading, positioning, loading and unloading can also be performed with ground operators or on the chest  
In these cases, act with extreme caution! It's still anyone FORBIDDEN rest on the floor during transfers.



**Operators should pay close attention during the loading and maintenance operations as may be in the danger zone: should pay attention to the directions of this manual and the warning signs of danger on the machine!**

## CHAPTER 3

### TRANSPORT TRAILER

#### 3.1 PRELIMINARIES

The transport of the trailer can be made by trucks, containers and / or possibly railway wagons: You must use a vehicle of a size suited to mass and dimensions of the trailer shown in "SPECIFICATIONS".

To work safely you need to consult the manual and its appendices before carrying out any work on the machine

#### 3.2 HANDLING, LOADING AND UNLOADING

The trailer is normally provided free packaging and in a horizontal position: You must use a lifting system (forklifts, cranes, bridge cranes, ...) of adequate capacity hooking on ropes or chains to the frame of the right dimensions and the rudder to keep it horizontal.

Before proceeding to lifting, make sure that any moving parts of the trailer are securely locked. Lift the machine with extreme caution and put it slowly, without shock or sudden movements, be careful not to tilt it to avoid losing stability.

The lifting and transport can be very dangerous if not done with extreme caution away so the uninitiated, clean, clear and delimit the area transfer, to verify the integrity and suitability of the available means, do not touch the suspended load and observe the safety distances.

The surface on which you want to load the trailer, it must be horizontal to prevent movement of the load. Once loaded onto the means of transport, make sure that the trailer remains locked in its position: set the plane on which is supported by the aid of ropes or



chains of adequate size. The ropes (or chains) must be securely fastened to the trailer and well stretched toward the anchor point on the ground.

Once the transport, before releasing the trailer from all constraints, verifies that the status and location of the same are such there is no danger.

Then proceed to the discharge using methods similar to those used for the load.

## CHAPTER 4

### USING THE TRAILER

#### 4.1 GENERALITY

The tractor operator must be trained in the conduct of the tractor and trailer coupled: during working hours he is responsible for the vehicle and as such have to worry about prohibit its use by unauthorized persons.

Before starting the machine complete, the operator must make sure it is in perfect working order.

Any problems should be reported immediately to security managers.



**The terms "forward, backward, left and right" reported in the following, refer to an operator sitting in the driving seat.**

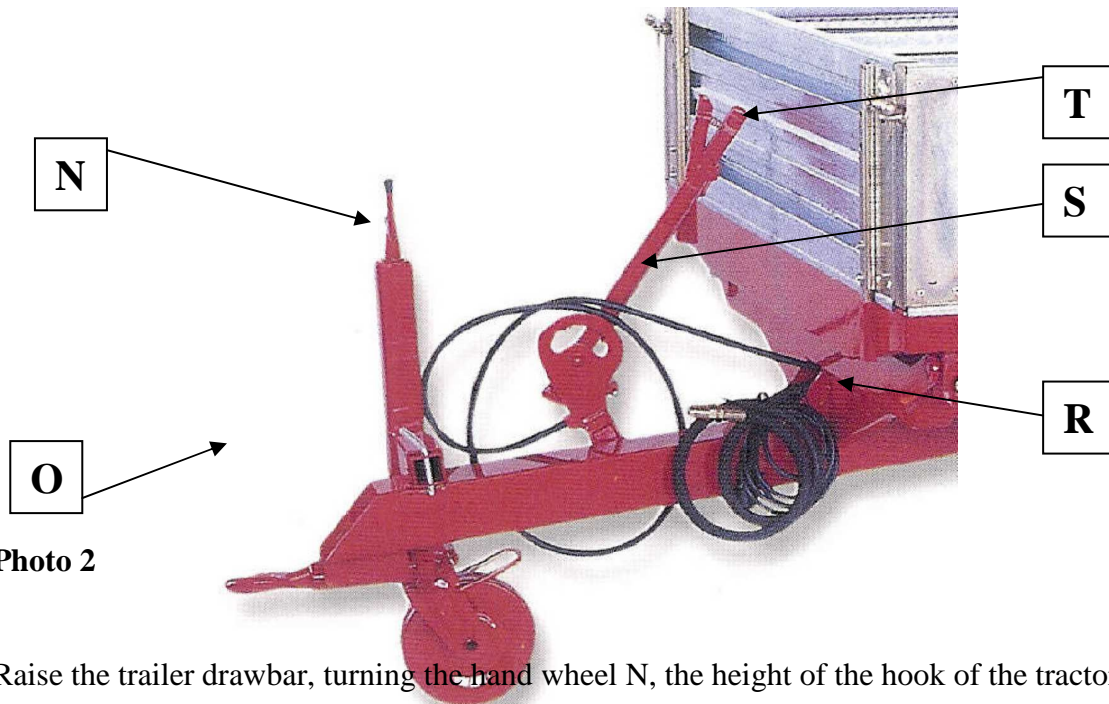
#### 4.2 GETTING STARTED

Before attaching the trailer to the tractor:

- Check the integrity of the side and the correct positioning of themselves and their attachment systems.
- Check the correct insertion of the four locking pins in the union U of the body to the frame.
- Check for oil leaks through gaskets, fittings and pipes of the hydraulic circuit control tipping body
- Check the integrity of the flexible cable and brake levers
- Check the integrity of the rear lights
- Check for proper tire pressure.

### 4.3 ATTACHMENT TO A TRACTOR

First of all check that the tractor's attachment system is approved. To attach the trailer to the tractor, approach it with appropriate maneuvers in such a way that the coupling on the tractor and the towing eye on the drawbar of the trailer are located very close. Perform the operation by moving the tractor and avoiding the manual maneuvers.



**Photo 2**

Raise the trailer drawbar, turning the hand wheel N, the height of the hook of the tractor, pull the coupling pin after removing the cotter pin from it, then take it with the eye of the trailer, put the pin in eye and insert the cotter pin in the pin.

Perform the above steps carefully: on the rudder there are vertical forces that may act make it difficult to control!

Using the hand wheel N raise from the ground as much as possible the wheel: in this way the trailer rests on the rear axle on the one hand and on the coupling on the tractor other.

The wheel can be further raised from the ground, turning it upwards: the spring P (Photo 3) holds it in this position: pulling the retaining pin Q the wheel, if necessary, can also be removed from the trailer.

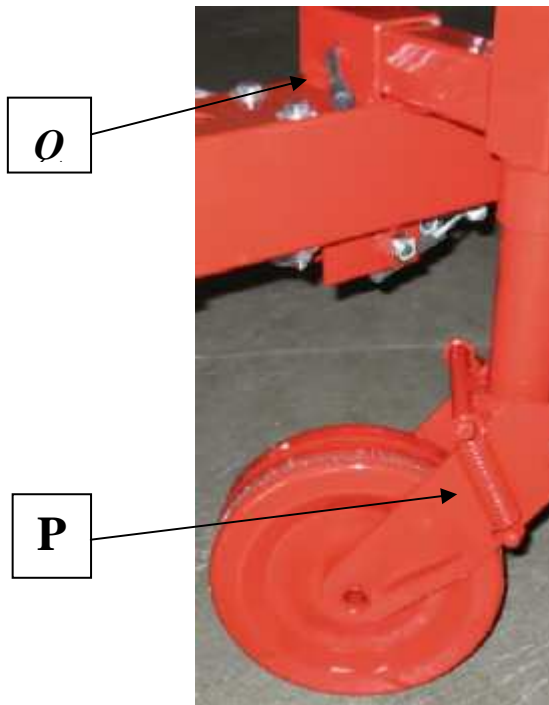


Photo 3



Photo 4

If the tractor there is a system of automatic hookup, verify that the connection was successful. Pull the brake lever from its R bayonet mount on the rudder S and assemble in the same slot on the tractor (Photo 4).

Connect finally, using the respective quick connections, the pipe of the tipping cylinder body and the power cable of the rear lights respectively to the hydraulic system and the electrical system of the tractor.

After attaching the trailer to the tractor, check:

- The correct functioning of the hydraulic tipping body correct operation of the braking system
- The correct functioning of the electrical system.

#### 4.4 LOADING TRAILER PROCEDURE

Before proceeding with the loading, turn off the tractor engine and enter the parking brake. With the trailer horizontal as possible and using suitable lifting tackle, place the load in a central position with respect to the body: With the trailer horizontal as possible and using suitable lifting tackle, place the load in a central position with respect to the body: for bulk materials do not exceed the top of the side. Fix the load with ropes or chains of adequate size pulling them with suitable devices of the trailer.

In any case, always make sure that the mass of the load is less than the rated capacity stated by the manufacturer and indicated on the label attached on the machine.

**WARNING!**

**If the trailer is not used carefully following the instructions given in this manual, the company RAVENNA Mechanical Workshops snc declines from now all responsibility for any damage to people, animals and / or property damage caused by improper use.**

**WARNING!**

**For loading and unloading, if necessary, use personal protective equipment: gloves, safety glasses, work boots.**

**4.5 IN GEAR**

After disconnecting the parking brake, the operator driver can move the tractor with the trailer hooked.

While driving he must move with extreme caution to avoid risk to themselves and to other persons present within the operating range of the vehicle due to possible movements of the load. The maneuverability of the tractor is in fact heavily influenced by the presence of the trailer, especially if the load is full and you have to move in confined spaces and / or slope. If necessary, in the slopes and in reverse, use the service brake of the trailer.

**4.6 UNLOADING THE TRAILER**

After stopping the vehicle and entered the parking brake, for unloading, we can distinguish two cases:

- Bulky items that need to be downloaded using forklifts, cranes or other similar means.

After releasing the load from ropes or chains anchoring the lower body any one or more banks engage the load with appropriate means and proceed.

**Photo 5****Photo 6**

- Bulk material or that can be downloaded using the hydraulic tilting system of the trailer. Lower the edge of the side which you intend to download taking the utmost care not to pinch your hands or fingers; Remove the pins locking by U; (Photo 3 and 4); Proceed to the reversal acting on the appropriate lever on the tractor after checking that the material discharge does not cause damage to persons, animals or things; acting in the opposite direction on the same lever, return the container resting on the frame, replace the plugs stop and raise the edge previously lowered blocking it with the hook.

The operation of tipping must always be performed from the tractor seat: the command of the hydraulic valve located on the tractor must be where possible action type supported.

Tip the box can be made only under the following conditions:

- When the trailer is attached to the tractor;
- On ground level and stable
- Without people in the discharge zone
- In the absence of strong cross wind entities
- Taking the utmost care to maintain a safe distance from power

#### **4.7 PARKING THE TRAILER**

Before leaving the tractor with the trailer, remove the ignition key to enter both brakes (tractor and trailer). If the trailer must be parked by only disengages from the tractor repeating in reverse the coupling operations, taking care to position the front support wheel at a height such as to keep the trailer horizontal. Enter the parking brake by rotating the adjusting lever.

In both cases avoid parking on a slope, in front of doors, emergency exits, fire-fighting devices or in any case in order to create obstacle.

#### **4.8 PERIOD OF INACTIVITY - STORAGE**

For long-term storage (over 60 days), after washing, do the following:

- Clean up the trailer from dirt, mud and grease;
- Carry out any repairs;
- Grease the cables brake control, moving parts and grease on the trailer the U support.
- Park the trailer in a dry place and protected from the weather and possibly cover it with a cloth.
- In moist and salty sprinkle with a thin layer of oil the metal parts

## **CHAPTER 5**

### **CHECKS, INSPECTIONS SAFETY, MAINTENANCE AND REPAIR**

Below are given instructions for proper maintenance of the trailer: they are approximate and may vary depending on the climatic conditions of the working environment.

Any changes are left to the common sense and experience of the operator. However, it remains critical that careful maintenance is one of the most important factors for the proper functioning of the trailer: ignore this factor, it can be a source of danger to persons and damage to property and for the first trailer.

The instructions provided in this manual concerning the controls and normal maintenance. Extraordinary maintenance, repairs and special records must be performed by qualified personnel.

Before beginning the inspection, maintenance, adjustment or repair, lock the trailer perfectly level: in case you need to perform operations in container upside down, to operate safely lock the body in the tilted position, using the appropriate device.



**Warning!**  
**Operate with box completely empty!**



**Important: Do not dispose of lubricating oils and any other toxic waste into the environment, but dispose of it as required by law and regulation of collection and recycling!**

## 5.1 PERIODICALLY CHECK

### *PLUMBING:*

- The integrity of supply pipes
- The correct operation of the lifting cylinder body
- The presence of leaks

### *BRAKING SYSTEM:*

- The integrity of the control cable
- The state of wear of the brake shoes
- Correct functioning of the system: both stationary and in-service.

### *ELECTRICAL MAINTENANCE:*

- The integrity of the connection cable
- The integrity of the lamps
- The correct working of electrical parts.

### *MECHANICAL MAINTENANCE:*

- Check the integrity of safety devices;
- Check the tightness of bolts and nuts;
- Grease and oil moving parts at least annually or more frequently, if necessary, at the discretion of the operator.

### 5.5 EXTRA MAINTENANCE

Are regarded as extraordinary maintenance failures of various kinds which may occur during operation. In these cases, you should NOT make any direct intervention on the machine and contact your dealer.

## CHAPTER 6

### DEMOLITION OF THE TRAILER

#### 6.1 GENERALITY

Once you reach the end of the service life, the trailer must be demolished: the out of service and in terms of no longer being used for the purposes for which at the time was designed and constructed, it must still be able to enable the reuse of raw material that is made.

It is recommended to check if all the parts of the machine are to be demolished or if some can still be reused as spare parts (axle, wheels, rudder, hydraulic cylinder, etc.).

#### **WARNING!**



**Officine Metalmeccaniche Ravenna assumes no responsibility for damages to persons, domestic animals or property arising from the reuse of individual parts of the machine for work situations different from the original.**

#### 6.2 DECOMMISSIONING



**Decommissioning and demolition of the machine must be carried out only by suitably trained personnel and equipped.**

To put out of service the trailer you need to make in the following steps:

- Disconnect the trailer from the tractor according to the procedures outlined in this manual.
- Disconnect the oil supply sources.
- Remove the electrical parts
- Remove the non-metallic parts and components.





**WARNING!**

**The machine is made of non-biodegradable materials, for the purpose of scrapping has to be separated into parts of different types of construction and disposed of by authorized facilities.**

**6.3 RESIDUAL RISK AFTER DISABLING**

If the indications given in this chapter are performed carefully, there are no residual risks after deactivation.

**ANNEX A01**

**CONTROL REGISTER**

*References to legislation*

This audit log is an integral part of this manual, and as such should be used, stored and must accompany the machine over its useful life, until its final demolition.

Instructions for Completing

The register is provided to record, according to the proposed schemes, the following events relating to the life of the trailer:

- Transfers of property
- Replacement of components
- Failure of a certain size and their repairs
- Periodic checks.

NOTE: If the leaves of this register would be insufficient add the necessary sheets prepared according to various schemes listed here.

The sheets become an integral part of this register.

**DATA REGISTER**

Machine properties

**DELIVERY OF THE FIRST TRAILER OWNER:**

The tipping trailer RAVENNA, number ..... , year of construction ..... of this control register was delivered by Officine Metalmeccaniche Ravenna snc, on

..... to company .....

according to the contractual terms with the technical, dimensional and functional specified in the user instructions and content in this register.

\_\_\_\_\_

\_\_\_\_\_

**SUBSEQUENT TRANSFERS OF PROPERTY**

On ..... ownership of the trailer in question is transferred to the company/business:

.....

This is to certify that on the date mentioned above, the technical, dimensional and functional in the trailer were in conformance with what was originally required and that any changes have been recorded in this register.

The Seller

The Buyer

\_\_\_\_\_

\_\_\_\_\_

**SUBSEQUENT TRANSFERS OF PROPERTY**

On ..... ownership of the trailer in question is transferred to the company/business:

.....

This is to certify that on the date mentioned above, the technical, dimensional and functional in the trailer were in conformance with what was originally required and that any changes have been recorded in this register.

The Seller

The Buyer

\_\_\_\_\_

\_\_\_\_\_

**SUBSEQUENT TRANSFERS OF PROPERTY**

On ..... ownership of the trailer in question is transferred to the company/business:

.....

This is to certify that on the date mentioned above, the technical, dimensional and functional in the trailer were in conformance with what was originally required and that any changes have been recorded in this register.

The Seller

The Buyer

\_\_\_\_\_

\_\_\_\_\_

\_\_\_\_\_

\_\_\_\_\_

*Replacement of components or parts*

**REPLACEMENT PARTS**

Date:	
Description of component:	
Provided by:	
Cause of replacement:	

The head of the company responsible for replacement

The user

\_\_\_\_\_

**REPLACEMENT PARTS**

Date:	
Description of component:	
Provided by:	
Cause of replacement:	

The head of the company responsible for replacement

The user

\_\_\_\_\_

**REPLACEMENT PARTS**

Date:	
Description of component:	
Provided by:	
Cause of replacement:	

The head of the company responsible for replacement

The user

\_\_\_\_\_

**REPLACEMENT PARTS**

Date:	
Description of component:	
Provided by:	
Cause of replacement:	

The head of the company responsible for replacement

The user

\_\_\_\_\_

\_\_\_\_\_

\_\_\_\_\_  
\_\_\_\_\_

***Faults of a certain entity and their repairs***

Date:	
Description of component:	
Causes:	
Repair performed:	

The head of the company responsible for replacement

The user

\_\_\_\_\_

***Faults of a certain entity and their repairs***

Date:	
Description of component:	
Causes:	
Repair performed:	

The head of the company responsible for replacement

The user

\_\_\_\_\_

***Faults of a certain entity and their repairs***

Date:	
Description of component:	
Causes:	
Repair performed:	

The head of the company responsible for replacement

The user

---

***Faults of a certain entity and their repairs***

Date:	
Description of component:	
Causes:	
Repair performed:	

The head of the company responsible for replacement

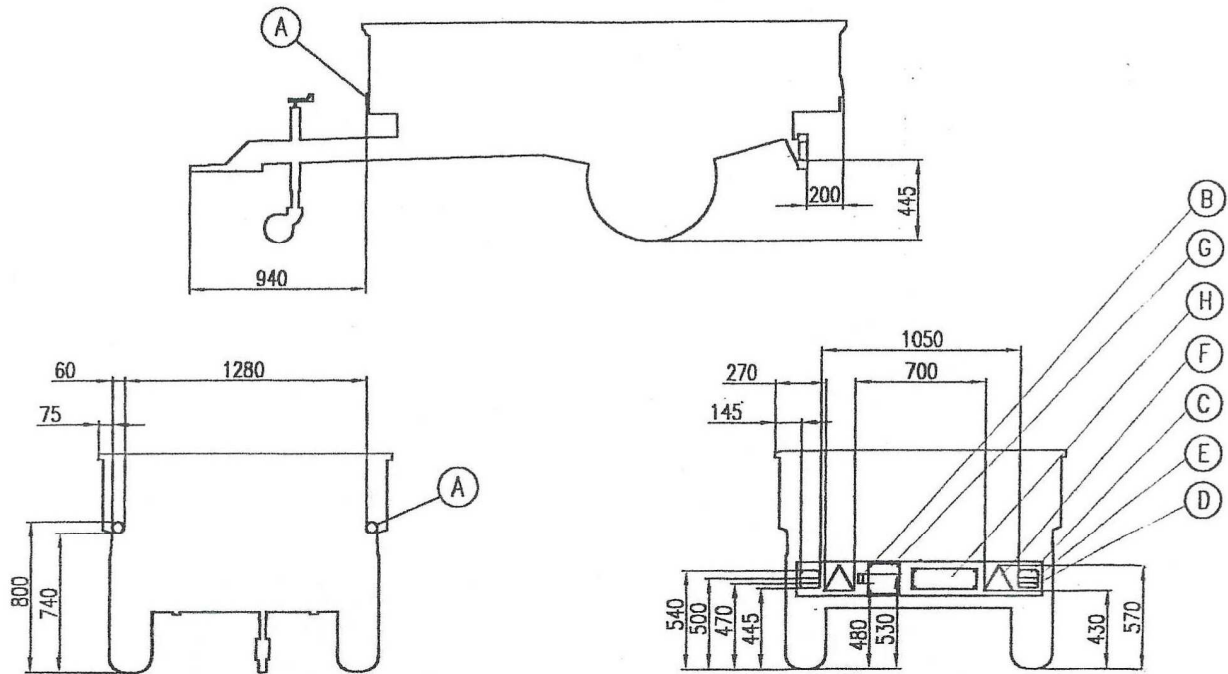
The user

---

**ANNEX A02**

**WIRING DIAGRAM**

**SIGNALLING DEVICES VISUAL AND LIGHTING**



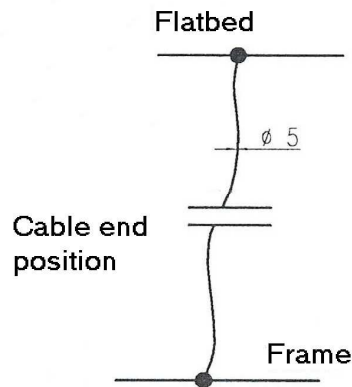
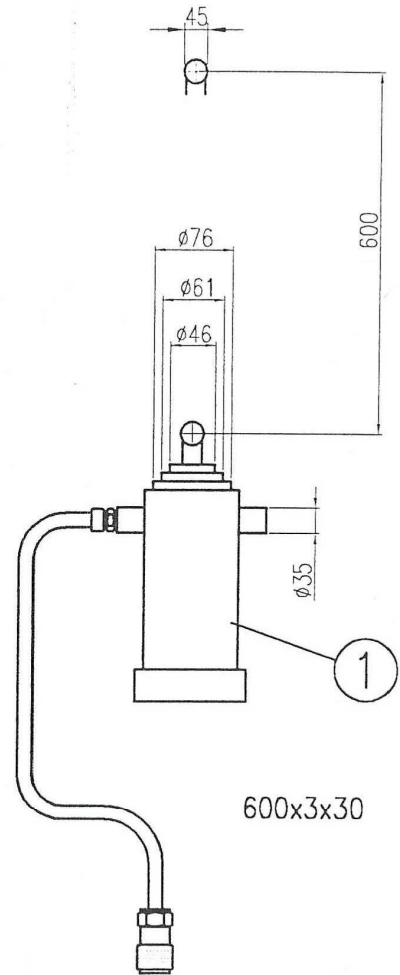
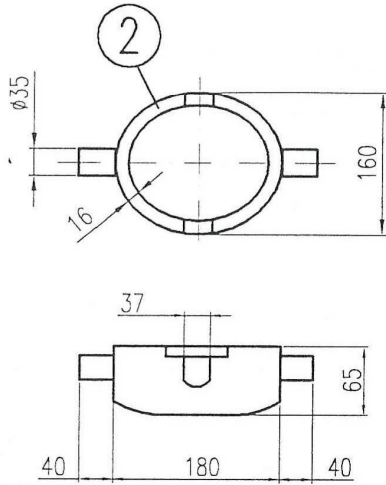
**LEGEND**

A	White front reflectors	Approv. II E3	52379
B	White rear license plate light	Approv. II E3	32323
C	Rear direction indicators yellow-amber	Approv. II E3	50739
D	Low beams red	Approv. II E3	50581
E	Rear stop light red	Approv. II E3	50581
F	Red triangular rear reflectors	Approv. III E3	02-55175
G	License plate support		
H	Support registration plate		

**ANNEX A03**

**HYDRAULIC SYSTEM DIAGRAM**

Hydraulic system lifting

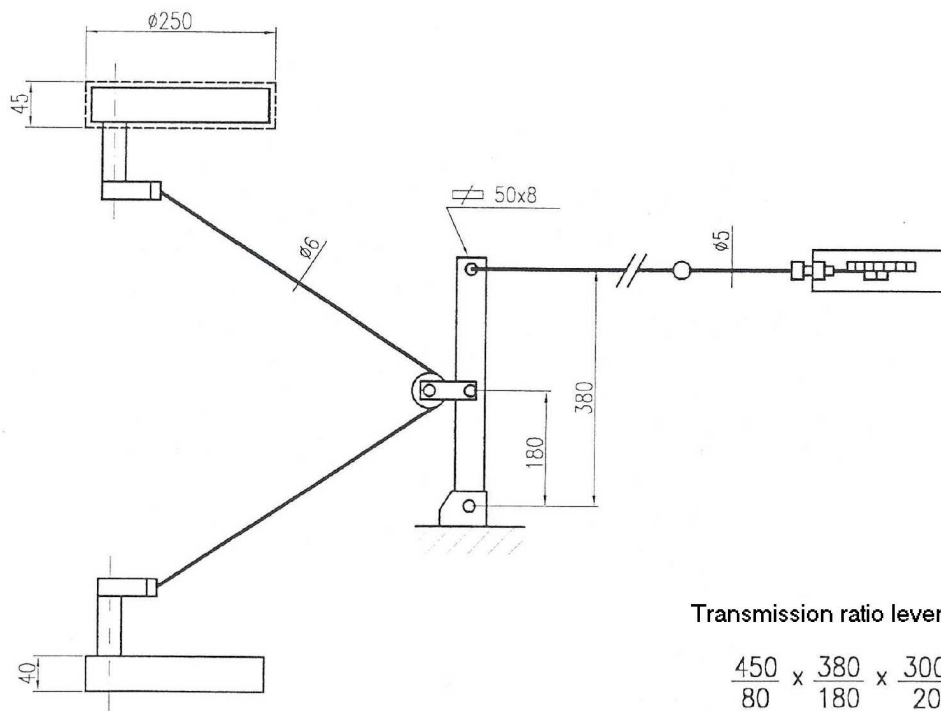
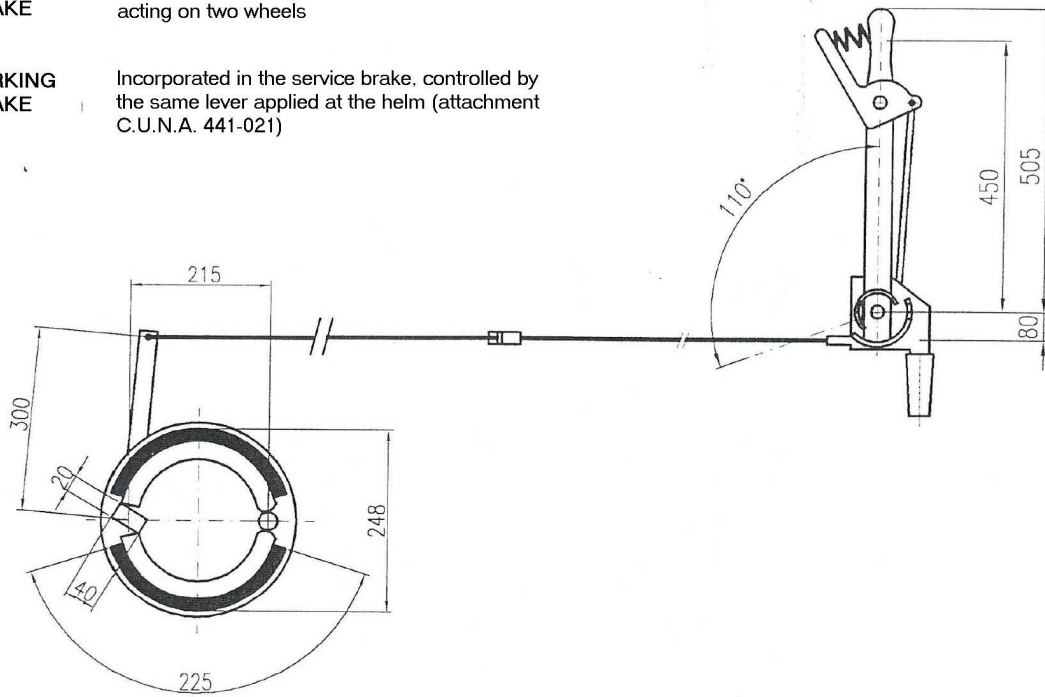


- 1) Piston
- 2) Cradle piston

**ANNEX A04 BRAKING SYSTEM DIAGRAM**

**SERVICE BRAKE** Mechanical hand-operated lever on the tractor, acting on two wheels

**PARKING BRAKE** Incorporated in the service brake, controlled by the same lever applied at the helm (attachment C.U.N.A. 441-021)



Transmission ratio levers

$$\frac{450}{80} \times \frac{380}{180} \times \frac{300}{20} = 178,12$$



### GENERAL CONDITIONS OF WARRANTY

The trailer is guaranteed for 24 months from delivery: starts from the date shown on the bill issued by the dealer.

Within this period will be repaired or replaced free components which, at the sole discretion of the manufacturer, to be defective.

The guarantee is available at our factory.

The warranty for all electrical, parts subject to wear and consumables, parts removed, tampered with or repaired by anyone other service network of the manufacturer, are also excluded accidental breakages due to transport, misuse or improper , through negligence or carelessness.

The surgery to repair or replacement of components during the warranty does not give right to extensions of the warranty beyond the limits.

The warranty does not cover any damage to period of inefficiency, will not be recognized compensation for any loss of production, financing costs or otherwise arising from machine downtime.

The guarantee does not cover:

- - Incorrect maneuvers with damage to the trailer;
- - Improper use than expected;
- - Violation of safety systems;
- - Failure to comply with instructions and warnings in the user manual;
- - Insufficient maintenance;
- - Failure of Safety regulations;
- Changes made by the user on the machine or other persons not authorized by the manufacturer;
- - Use of non-original spare parts
- - Violation of the plate the data of the machine.

Any reports of malfunction must be quickly forwarded to our Technical Service Department, specifying the nature of the incident and providing as much information as possible.